



# DSS

## Update Guide






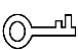

# Foreword

## General

This manual introduces how to update the DSS products.

## Safety Instructions

The following categorized signal words with defined meaning might appear in the manual.

Signal Words	Meaning
 <b>DANGER</b>	Indicates a high potential hazard which, if not avoided, will result in death or serious injury.
 <b>WARNING</b>	Indicates a medium or low potential hazard which, if not avoided, could result in slight or moderate injury.
 <b>CAUTION</b>	Indicates a potential risk which, if not avoided, could result in property damage, data loss, lower performance, or unpredictable result.
 <b>TIPS</b>	Provides methods to help you solve a problem or save you time.
 <b>NOTE</b>	Provides additional information as the emphasis and supplement to the text.

## Revision History

Version	Revision Content	Release Time
V1.0.0	First release.	December 2022

# Table of Contents

<b>Foreword</b> .....	<b>I</b>
<b>1 Updating DSS Express/Professional from V8.0.2/V8.0.4/V8.1.0/V8.1.1 to V8.2.0</b> .....	<b>1</b>
1.1 Compatible Version .....	1
1.2 Backing Up and Restoring Data.....	2
1.3 Update Procedures.....	2
<b>2 Updating DSS Express from V8.0.2/V8.0.4/ V8.1.0/V8.1.1/V8.2.0 to DSS Professional V8.2.0</b> .....	<b>6</b>
2.1 Compatible Version .....	6
2.2 Backing Up and Restoring Data.....	6
2.3 Update Operations .....	6
<b>3 Upgrading DSS Express/Professional from V7 to V8.2.0</b> .....	<b>13</b>
<b>Appendix 1 DSS Professional Function Notes</b> .....	<b>14</b>
<b>Appendix 2 DSS Express Function Notes</b> .....	<b>24</b>
<b>Appendix 3 Cybersecurity Recommendations</b> .....	<b>31</b>

# 1 Updating DSS Express/Professional from V8.0.2/V8.0.4/V8.1.0/V8.1.1 to V8.2.0



- Updating to V8.2.0 will overwrite your current version. All data will be kept.
- To understand how each function will change after update, see "Appendix 1 DSS Professional Function Notes" or "Appendix 2 DSS Express Function Notes".
- After DSS Express/Professional is updated to V8.2.0, data from V8.0.2, V8.0.4, V8.1.0 or V8.1.1 will be kept.


## 1.1 Compatible Version

Product	Version before Update	Program before Update	Product after Update	New Version
DSS Express	V8.000.0000002.0	General_DSS-Express_wi n32_IS_V8.000.0000002. 0.R.20220113.exe	DSS Express	V8.002.0000000.0
DSS Express	V8.000.0000004.0	General_DSS-Express_wi n32_IS_V8.000.0000004. 0.R.20220113.exe	DSS Express	V8.002.0000000.0
DSS Express	V8.001.0000000.0	General_DSS-Express_Wi n64_IS_V8.001.0000000. 0.R.20220430.exe	DSS Express	V8.002.0000000.0
DSS Express	V8.001.0000001.0	General_DSS-Express_Wi n64_IS_V8.001.0000001. 0.R.20220727.exe	DSS Express	V8.002.0000000.0
DSS Professional	V8.000.0000002.0	General_DSS-Profession al_Win64_IS_V8.000.000 0002.0.R.20220113.exe	DSS Professional	V8.002.0000000.0
DSS Professional	V8.000.0000004.0	General_DSS-Profession al_Win64_IS_V8.000.000 0004.0.R.20220113.exe	DSS Professional	V8.002.0000000.0
DSS Professional	V8.001.0000000.0	General_DSS-Profession al_Win64_IS_V8.001.000 0000.0.R.20220430.exe	DSS Professional	V8.002.0000000.0
DSS Professional	V8.001.0000001.0	General_DSS-Profession al_Win64_IS_V8.001.000 0001.0.R.20220727.exe	DSS Professional	V8.002.0000000.0

## 1.2 Backing Up and Restoring Data


To avoid data loss caused by update failure, make sure that you have backed up the data before update. In case of data loss, you can restore all the data from the backup file.

### Backing Up Data


Step 1 Log in to the PC Client, click  on the homepage and then select **Backup and Restore** in **System Config**.

Step 2 On **Manual Backup** of the **Backup** page, select backup path, and then click **Backup Now**.

### Restoring Data

Step 1 Log in to the PC Client, click  on the homepage, and then in the **System Config** section, select **Backup and Restore** > **Restore**.

Step 2 Restore data.


- Click  of a backup file that is stored on the server, and then enter the password of the current account, and the encryption password of the backup file when it was generated.
- Select a backup file that is stored on your computer, and then click **Restore Now**.

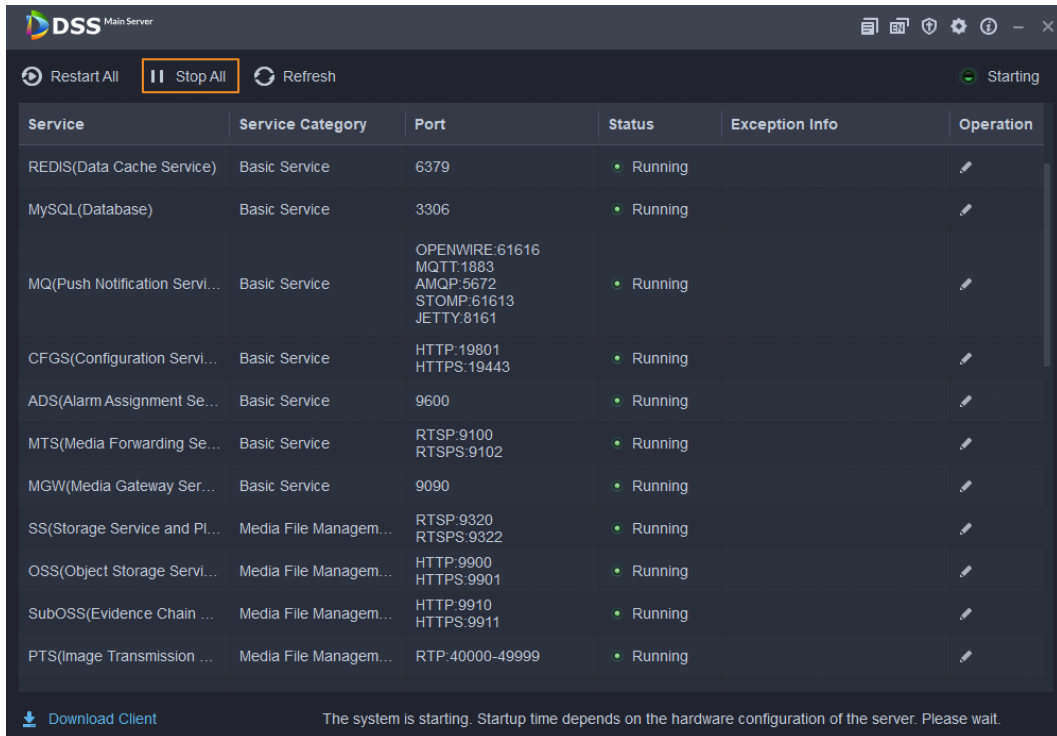
## 1.3 Update Procedures



- Contact technical support for help if the update fail.
- For main and sub servers of DSS Professional in distributed deployment, follow the steps below to update each server.
- For DSS Professional in hot standby, close the Rose software first, and then open it again after update. Update procedures are similar to updating DSS Professional with no hot standby.
- After DSS Express/Professional is updated from V8.0.4/V8.1.0/V8.1.1 to V8.2.0, people counting data before update cannot be displayed. If you need to keep the data, contact technical support.
- After DSS Professional is updated from V8.0.2/V8.0.4 to V8.2.0, metadata and ANPR records cannot be displayed. If you need to keep the records, contact technical support

Step 1 Log in to the server of DSS Professional or DSS Express.

Step 2 Double-click  on the desktop, log in to the system configuration tool, and then click **Stop All** to stop all services.

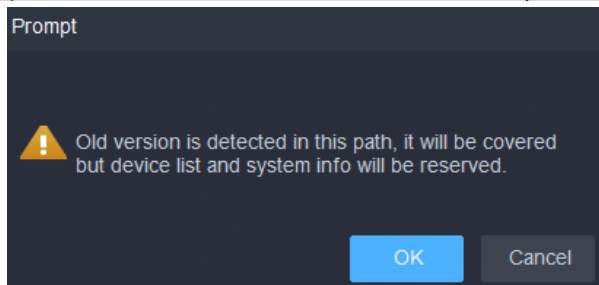


**Step 3** Double-click the V8.002.0000000.0 installation program. An update prompt is displayed as follows.

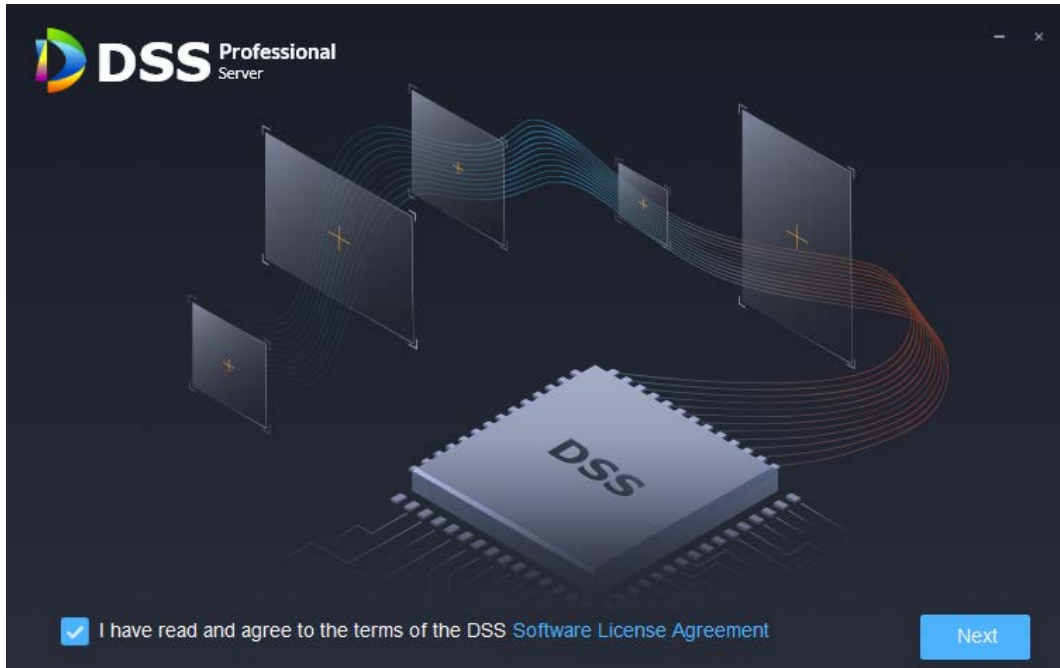
**Step 4** Click **OK**.



The installation path of the old version will be detected, and you cannot edit the directory.



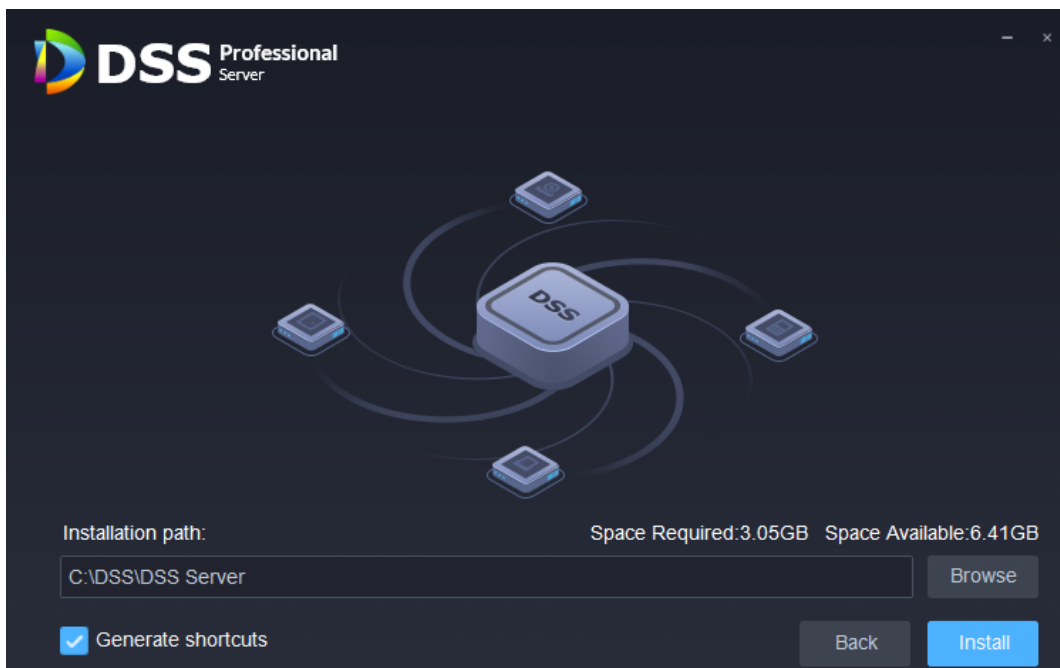
**Step 5** Read and agree to the agreement, and then click **Next**.



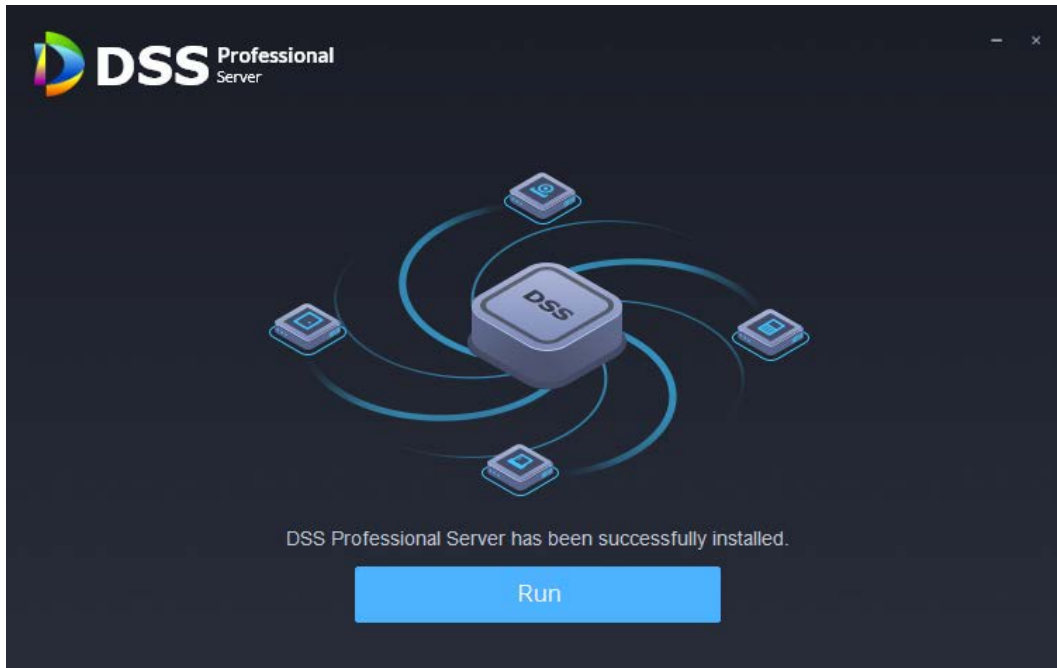
**Step 6** Click **Install**, and then the installation begins.



The process takes 4 to 8 minutes. Do not cut off the power or close the program.



**Step 7** After installation, click **Run** to run the program.



**Step 8** Log in to the system configuration tool to check whether all the services are running properly.



If the word **Running** displays at the upper-right corner, it means all services are running properly. If not, check the status of each service to make sure all services are running properly.

Service	Service Category	Port	Status	Exception Info	Operation
NGINX(Proxy Service)	Basic Service	HTTP:10080 HTTPS:443(Login Port)	Running		
SMC(System Management...)	Basic Service	HTTP:8000 HTTPS:8443 CMS:9000 SHUTDOWN:8006 REDIRECT:9005 SUBCMS:9080	Starting		
HRS(Platform Discovery S...)	Basic Service	N/A	Running		
REDIS(Data Cache Service)	Basic Service	6379	Running		
MySQL(Database)	Basic Service	3306	Running		
MQ(Push Notification Servi...)	Basic Service	OPENWIRE:61616 MQTT:1883 AMQP:5672 STOMP:61613 JETTY:8161	Running		
CFGS(Configuration Servi...)	Basic Service	HTTP:19801 HTTPS:19443	Running		
ADS(Alarm Assignment Se...)	Basic Service	9600	Running		
MTS(Media Forwarding Se...)	Basic Service	RTSP:9100 RTSPS:9102	Running		

Restart All | Stop All | Refresh | Starting

[Download Client](#) | The system is starting. Startup time depends on the hardware configuration of the server. Please wait.

**Step 9** Log in to the PC Client again, and then follow the on-screen instructions to update it.



## 2 Updating DSS Express from V8.0.2/V8.0.4/V8.1.0/V8.1.1/V8.2.0 to DSS Professional V8.2.0

### 2.1 Compatible Version

Product	Version before Update	Program before Update	Product after Update	New Version
DSS Express	V8.000.0000002.0	General_DSS-Express_win32_IS_V8.000.0000002.0.R.20220113.exe	DSS Professional	V8.002.0000000.0
	V8.000.0000004.0	General_DSS-Express_win32_IS_V8.000.0000004.0.R.20220113.exe		
	V8.001.0000000.0	General_DSS-Express_Win64_IS_V8.001.0000000.0.R.20220430.exe		
	V8.001.0000001.0	General_DSS-Express_Win64_IS_V8.001.0000001.0.R.20220727.exe		
	V8.002.0000000.0	General_DSS-Express_Win64_IS_V8.002.0000000.0.R.20221201.exe		

### 2.2 Backing Up and Restoring Data

See "1.2 Backing Up and Restoring Data".


### 2.3 Update Operations

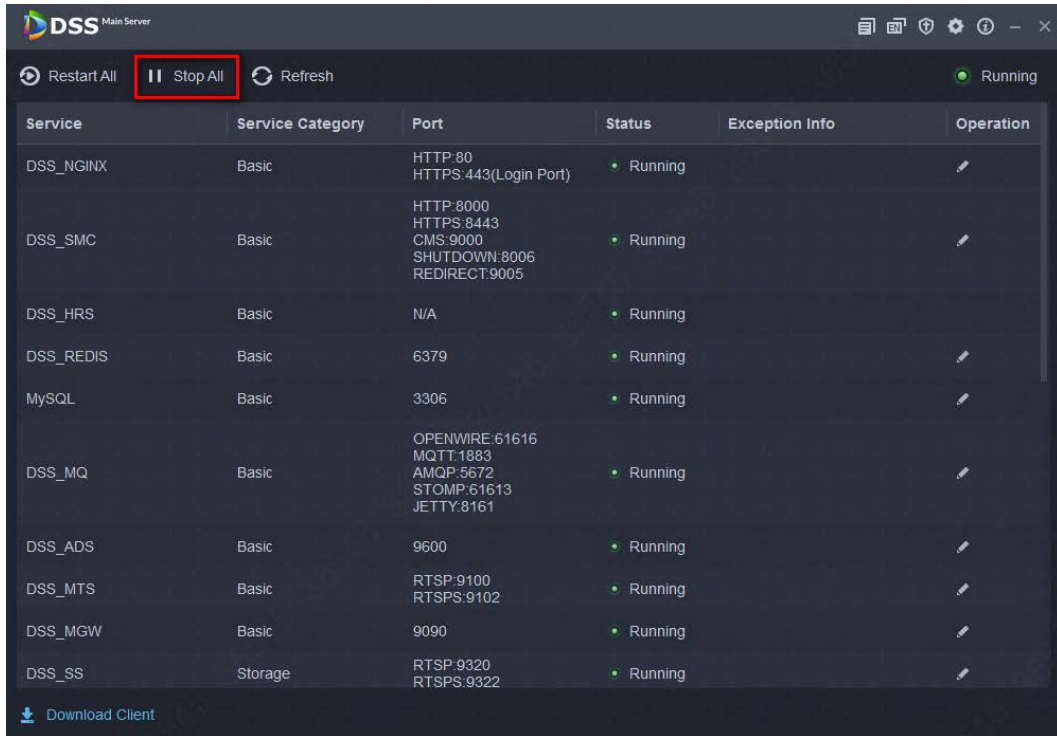


- After DSS Express is updated from V8.0.4/V8.1.0/V8.1.1 to DSS Professional V8.2.0, people counting data before update cannot be displayed. If you need to keep these data, contact technical support.
- After DSS Express is updated from V8.0.2/V8.0.4/V8.1.0/V8.1.1/V8.2.0 to DSS Professional V8.2.0, metadata, ANPR, alarms, face capture and recognition records cannot be displayed, and data other than these will be kept. If you need to keep these data and records that cannot be displayed, contact technical support.

## Updating the Server and PC Client

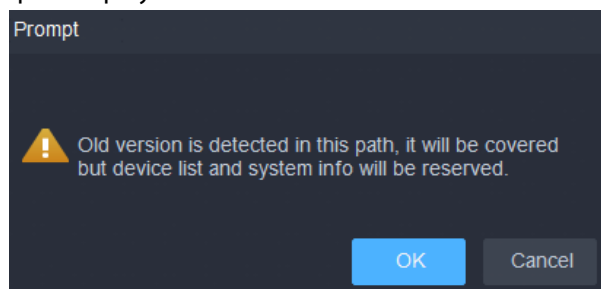
**Step 1** Log in to the DSS Express server.

**Step 2** Double-click  on the desktop, log in to the system configuration tool, and then click **Stop All** to stop all services.



**Step 3** Double-click the V8.002.0000000.0 installation program.

An update prompt is displayed as follows.



**Step 4** Click **OK**.



The installation path of the old version will be detected, and you cannot edit the directory.

**Step 5** Read and agree to the agreement, and then click **Next**.



**Step 6** Click **Install** to start the installation.



The process takes 4 to 8 minutes. Do not cut off the power or close the program.



**Step 7** After installation, click **Run** to run the program.



**Step 8** Log in to the system configuration tool to check whether all the services are running properly.



If the word **Running** displays at the upper-right corner, it means all services are running properly. If not, check the status of each service to make sure all services are running properly.

Service	Service Category	Port	Status	Exception Info	Operation
NGINX(Proxy Service)	Basic Service	HTTP:10080 HTTPS:443(Login Port)	Running		
SMC(System Management...)	Basic Service	HTTP:8000 HTTPS:8443 CMS:9000 SHUTDOWN:8006 REDIRECT:9005 SUBCMS:9080	Starting		
HRS(Platform Discovery S...)	Basic Service	N/A	Running		
REDIS(Data Cache Service)	Basic Service	6379	Running		
MySQL(Database)	Basic Service	3306	Running		
MQ(Push Notification Servi...)	Basic Service	OPENWIRE:61616 MQTT:1883 AMQP:5672 STOMP:61613 JETTY:8161	Running		
CFGS(Configuration Servi...)	Basic Service	HTTP:19801 HTTPS:19443	Running		
ADS(Alarm Assignment Se...)	Basic Service	9600	Running		
MTS(Media Forwarding Se...)	Basic Service	RTSP:9100 RTSPS:9102	Running		

Download Client      The system is starting. Startup time depends on the hardware configuration of the server. Please wait.

**Step 9** Log in to the PC Client again, and then follow the on-screen instructions to update it.


## Updating the license

If DSS Express before update is a free or trial version, follow the normal procedures to apply for and activate a V8.2.0 license for DSS Professional after update. If DSS Express before update is a paid version, follow the steps below.

**Step 1** Purchase a V8.2.0 license for DSS Professional.




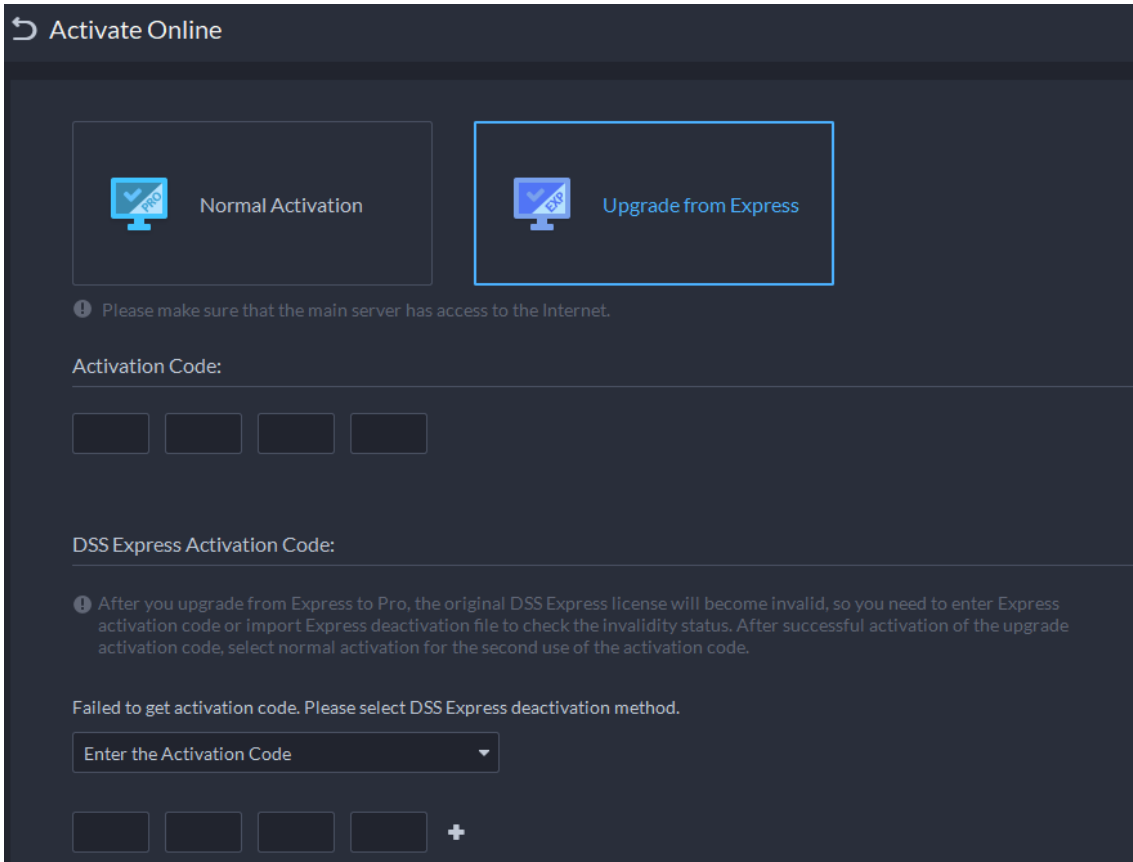
DSS Professional supports more functions and devices, such as attendance, cascading, third-party integration, parking management, group talk, independent database, EAS, retail, lift control, emergency devices, radars, POS, security screening machines, walk-through metal detectors, and LED displays. If you need these functions and devices, make sure that you purchase a license that includes them. For more details, see the user's manual of DSS Professional.

**Step 2** Log in to the PC Client, click  on the homepage, and then select **License** in the **System Config** section.

**Step 3** Select how you want to update according to your network status.

- Activate the license online.

- 1) Click  next to **Activation Code** on the lower-left corner to copy the activation code.
- 2) Select **Activate Online > Upgrade from Express**.



Activate Online

Normal Activation Upgrade from Express

Please make sure that the main server has access to the Internet.

Activation Code:


DSS Express Activation Code:

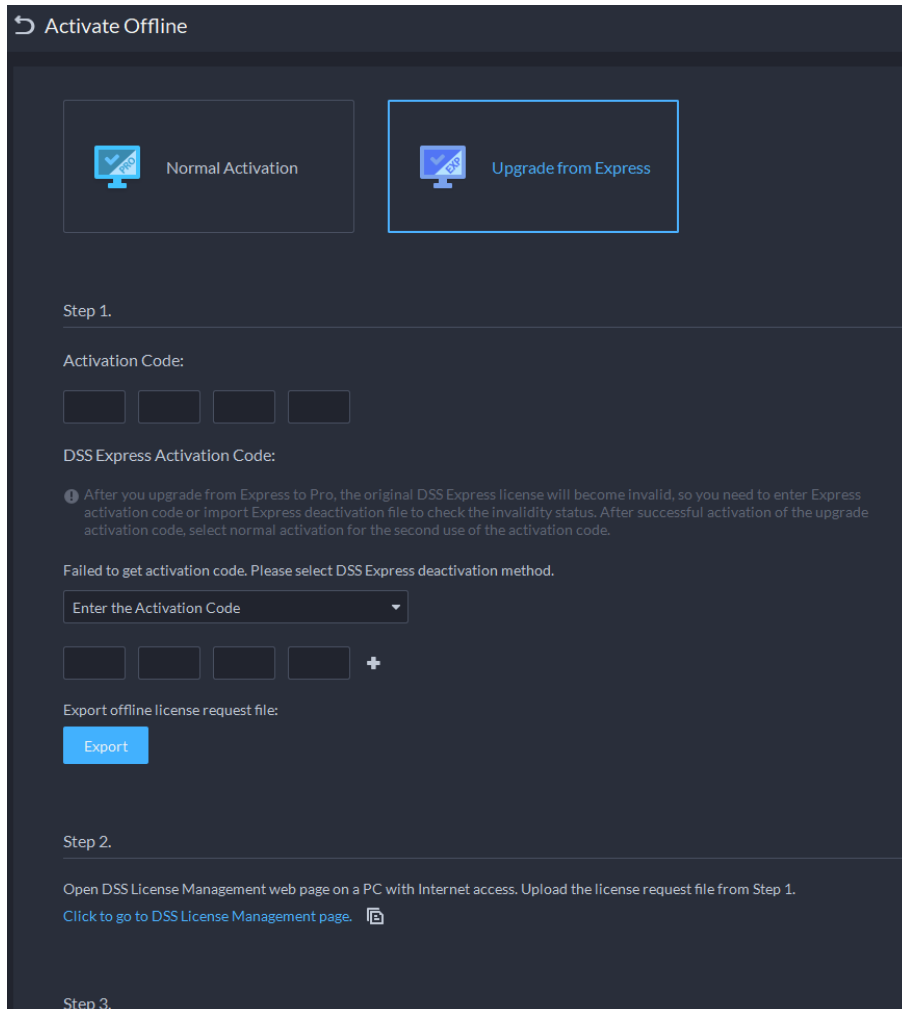
After you upgrade from Express to Pro, the original DSS Express license will become invalid, so you need to enter Express activation code or import Express deactivation file to check the invalidity status. After successful activation of the upgrade activation code, select normal activation for the second use of the activation code.


Failed to get activation code. Please select DSS Express deactivation method.

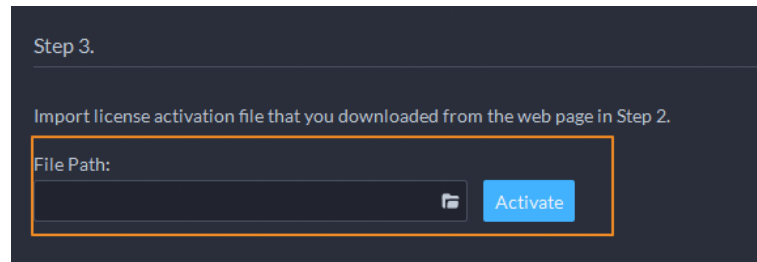
Enter the Activation Code

- 3) In the **Activation Code** input area, enter the V8.2.0 activation code for DSS Professional.
- 4) In the **DSS Express Activation Code** area, select **Enter the Activation Code**, and then enter the activation code you just copied.

- 5) Click **Activate Now**.
  - Activate the license offline.
- 1) Click  next to **Activation Code** on the lower-left corner to copy the activation code.
- 2) Select **Activate Offline > Upgrade from Express**.



- 3) In the **Activation Code** input area, enter the V8.2.0 activation code for DSS Professional.
- 4) In the **DSS Express Activation Code** area, select **Enter the Activation Code**, and then enter the activation code you just copied.
- 5) Click **Export**, save the activation file to your computer, and then move the file to another computer with Internet connection.
- 6) On the computer with Internet connection, go to <https://licensing.dahuasecurity.com/home/index> in the browser.
- 7) Select **DSS > Activate License**.
- 8) Click **Upload**, select and open the activation file, and then click **Activate**
- 9) Follow the on-screen instructions to save the license file to your computer.
- 10) Move the license file to the computer that needs to activate it.
- 11) Click , and then select and open the license file.



12) Click **Activate**.

## 3 Upgrading DSS Express/Professional from V7 to V8.2.0

DSS Express/Professional V7 cannot be directly updated to V8.2.0. You need to update from V7 to V8.0.2 first, and then to V8.2.0.

Step 1 Update DSS Express/Professional V7 to V8.0.2. See DSS V8.0.2\_Update Guide.

Step 2 Update DSS Express/Professional from V8.0.2 to V8.2.0.

- Update DSS Express from V8.0.2 to V8.2.0. See "1 Updating DSS Express/Professional from V8.0.2/V8.0.4/V8.1.0/V8.1.1 to V8.2.0".
- Update DSS Professional from V8.0.2 to V8.2.0. See "1 Updating DSS Express/Professional from V8.0.2/V8.0.4/V8.1.0/V8.1.1 to V8.2.0".
- Update DSS Express from V8.0.2 to DSS Professional V8.2.0. See "2 Updating DSS Express from V8.0.2/V8.0.4/V8.1.0/V8.1.1/V8.2.0 to DSS Professional V8.2.0".



## Appendix 1 DSS Professional Function Notes

Category	Function Module	Function	Notes
-	-	Network Configuration	Configuration is kept.
-	-	Security Configuration	Configuration is kept.
Device	Add device	Device Management	<ul style="list-style-type: none"> <li>● Configuration is kept.</li> <li>● Check after the update:                             <ul style="list-style-type: none"> <li>◇ All videos channels are in main stream by default.</li> <li>◇ Protocols for walk-through metal detectors are updated. Make sure that the type of the detector you use is correct.</li> </ul> </li> </ul>
Device	Add device	Organization Management	Data is kept.
Device	Device Configuration	Event Configuration	Configuration is kept.
Device	Device Configuration	Recording Plan	Configuration is kept.
Device	Device Configuration	Retrieval Plan	Configuration is kept.
Device	Device Configuration	Recording Storage Configuration	Configuration is kept.
Device	Device Configuration	Channel Binding	Configuration is kept.
Device	Device Configuration	Channel Configuration	Configuration is kept.
Device	Device Configuration	Device Configuration	Configuration is kept.
User	Role	Role Management	Data is kept.

Category	Function Module	Function	Notes
User	User	User Management	<ul style="list-style-type: none"> <li>• Configuration is kept.</li> <li>• Permissions for capturing images and saving videos to local PC are selected by default for administrators.</li> <li>• For persons and vehicles management, the name of the root organization is changed to All Persons and Vehicles.</li> <li>• Vehicles that are not linked to any person will be placed under All Persons and Vehicles. Vehicles that are linked to persons will be placed in the same organizations as the persons.</li> <li>• Permissions to access all person and vehicle groups, face comparison groups, access control groups, and vehicle arming groups will be granted to administrators by default.</li> </ul>
Storage	Storage	Network Disk	Configuration is kept.
Storage	Storage	Local Server Disk	Configuration is kept.

Category	Function Module	Function	Notes
Storage	Storage	Disk Group	Configuration is kept.
Storage	Storage	Device Storage Configuration	Configuration is kept.
Storage Plan	Recording Plan	Regular Recording Plan	Configuration is kept.
Storage Plan	Recording Plan	Motion-detecting Recording Plan	Configuration is kept.
Storage Plan	Retrieval Plan	Recording Retrieval	Configuration is kept.
Storage Plan	Retrieval Plan	File Retrieval	Configuration is kept.
Event	Event	Event Configuration	<ul style="list-style-type: none"> <li>• Configuration is kept.</li> <li>• After update, historical vehicle arming alarms will display the brands of vehicles, but not the color; historical vehicle blocklist alarms will display both the brands and colors of vehicles.</li> </ul>
Map	Map	Map Configuration	Configuration is kept.
Personnel & Vehicle Management	Personnel List	Personnel Group	Data is kept.
Personnel & Vehicle Management	Personnel List	Personnel	Data is kept.
Personnel & Vehicle Management	Vehicle List	Vehicle Management	Data is kept.
Arming List	Face Arming List	Face Comparison Group	Data is kept.
Arming List	Vehicle Arming List	Vehicle Arming Group	Data is kept.
Access Control	Door Group	Door Group Configuration	Configuration is kept.
Access Control	Door Group	Time Template	Configuration is kept.
Access Control	Door Group	Holiday Management	Configuration is kept.
Access Control	Access Control Group	Access Control Group	Configuration is kept.

Category	Function Module	Function	Notes
Access Control	Public Password	Public Password	Configuration is kept.
Access Control	Advanced Unlock Rule	First-card Unlock	Configuration is kept.
Access Control	Advanced Unlock Rule	Multi-card Unlock	Configuration is kept.
Access Control	Advanced Unlock Rule	Anti-Passback	Configuration is kept.
Access Control	Advanced Unlock Rule	Multi-door Interlock	Configuration is kept.
Access Control	Advanced Unlock Rule	Remote Verification	Configuration is kept.
Access Control	Auto Sync Records	Auto Sync Records	New function. <ul style="list-style-type: none"> <li>Deleted automatically synchronize records for attendance.</li> <li>If automatic synchronization was configured for attendance before update, it will be deleted after update, and you must configure again.</li> <li>Deleted logs for attendance configuration. Added logs for Auto Sync Records.</li> </ul>
Video Intercom	Video Intercom	Call Management	Configuration is kept.
Video Intercom	Video Intercom	Residential Area Configuration	Configuration is kept.
Video Intercom	Video Intercom	Room Configuration	Configuration is kept.
Video Intercom	Video Intercom	Contact Synchronization	Configuration is kept.
Video Intercom	Video Intercom	Private Password	Configuration is kept.
Video Intercom	Video Intercom	App QR Code	Configuration is kept.
Video Intercom	Video Intercom	App User	Configuration is kept.

Category	Function Module	Function	Notes
Lift Control	Lift Control	Lift Control Permission Group	<p>New function.</p> <ul style="list-style-type: none"> <li>Before update, lift control permissions were configured in the information of people. After update, the platform will generate lift control permission groups based on existing lift control permissions. These groups will be accessible by all roles by default.</li> <li>Lift control permission groups will be selected for people based on their permissions before update.</li> <li>Added logs for operations on lift control permission groups.</li> </ul>
Attendance	Attendance	Attendance Configuration	Configuration is kept.
Attendance	Attendance	Attendance Period	Configuration is kept.
Attendance	Attendance	Attendance Holiday Plan	Configuration is kept.
Attendance	Attendance	Attendance Shift	Configuration is kept.
Attendance	Attendance	Scheduling Management	Configuration is kept.
Visitor	Visitor	Automatic Visit	Configuration is kept.
Visitor	Visitor	Automatic Leave	Configuration is kept.

Category	Function Module	Function	Notes
Visitor	Visitor	Default Visitor Permission	Configuration is kept.
Visitor	Visitor	Email Template	Configuration is kept.
Visitor	Visitor	Pass Remark	Configuration is kept.
Parking Lot Management	Parking Lot Configuration	Basic Parking Lot Configuration	Configuration is kept.
Parking Lot Management	Parking Lot Configuration	Event Parameter Configuration	Configuration is kept.
Parking Lot Management	Parking Lot Configuration	Management of Exclusive Parking Spaces	Configuration is kept.
Parking Lot Management	Parking Lot Configuration	Layer Configuration of Parking Lot	Configuration is kept.
Parking Lot Management	Parking Lot Configuration	Vehicle Search Config	This new function is available to administrators by default.
Parking Lot Management	Entrance/Exit	Vehicle Group	Configuration is kept.
Intelligent Analysis	Intelligent Analysis	Configuration of People Counting Group	Configuration is kept, but the historical data must be converted by a tool.
Intelligent Analysis	Intelligent Analysis	Scheduled Report Configuration	Configuration is kept.
System Deployment	Distributed Configuration	Server Management	Configuration is kept.
System Deployment	Distributed Configuration	Resource Allocation	Configuration is kept.
System Deployment	Cascading Configuration	Cascading	Configuration is kept.
License	License	License	Data is kept.
System Parameter	System Parameter	Security Configuration	Configuration is kept.
System Parameter	System Parameter	Message Keeping Duration	Configuration is kept.
System Parameter	System Parameter	Timing	Configuration is kept.
System Parameter	System Parameter	Email Server	Configuration is kept.
System Parameter	System Parameter	Active Directory	Configuration is kept.
System Parameter	System Parameter	HTTPS	Configuration is kept.

Category	Function Module	Function	Notes
System Parameter	System Parameter	POS End Sign	Configuration is kept.
System Parameter	System Parameter	Login Method	Configuration is kept.
System Parameter	System Parameter	Remote Logs	Configuration is kept.
System Parameter	System Parameter	Independent Database Deployment	Configuration is kept.
Backup and Restore	Backup and Restore	Backup	Configuration is kept.
Backup and Restore	Backup and Restore	Restore	Configuration is kept.
Third-party Connection	Third-party Connection	Event Synchronization	Configuration is kept.
Third-party Connection	Third-party Connection	Data Synchronization	Configuration is kept.
Login	Login	Forget Password	Configuration is kept.
Notification Center	Notification Center		Configuration is kept.
Multi-station	Multi-station	-	Configuration is kept.
User Information	-	-	Configuration is kept.
Monitoring	Live View	Live View	Configuration is kept.
Monitoring	Video Playback	Video Playback	Configuration is kept.
Video Wall	Video Wall	Video Wall Business	Configuration is kept.
Map	Map	Map	Data is kept.
Real-time Event	Real-time Event	Real-time Event	No update is involved.
History Event	History Event	History Event	Data is kept.
Event Statistics	Event Statistics	Event Statistics	Data is kept.
Alarm Controller	Alarm Controller	Alarm Control	Data is kept.
Intelligent Search	Intelligent Search	Record	Data is kept.
Intelligent Search	Intelligent Search	Personnel	Data is kept.
Intelligent Search	Intelligent Search	Vehicle	Data is kept.
Intelligent Search	Intelligent Search	POS	Data is kept.
Case Bank	Case Bank	Case Bank Configuration	Configuration is kept.

Category	Function Module	Function	Notes
Maintenance Center	Overview	Overview	<ul style="list-style-type: none"> <li>● Data is kept.</li> <li>● Because the menu is changed, access the menu will be automatically updated for administrators. For other roles, their access will be changed accordingly:                             <ul style="list-style-type: none"> <li>◇ Overview: Overview.</li> <li>◇ Device: Resource Monitoring &gt; Device.</li> <li>◇ Service: Resource Monitoring &gt; Server.</li> <li>◇ Fault: Maintenance Management &gt; Fault.</li> <li>◇ Device Update: Maintenance Management &gt; Update.</li> </ul> </li> <li>● For roles other than administrators, they will not have access to Resource Monitoring &gt; Device even if they could access Channel Status and Disk Status.</li> </ul>
Maintenance Center	Resource Monitoring	Server	Data is kept.



Category	Function Module	Function	Notes
Maintenance Center	Resource Monitoring	Device	Data is kept.
Maintenance Center	Maintenance Management	Fault	<ul style="list-style-type: none"> <li>• Data is kept.</li> <li>• Added resource categories: Server = 1, device =3.</li> <li>• Added different types for each resource: Server = 255, device = the specific type of device, service = the specific service.</li> <li>• Added parent resource code for server and device codes.</li> <li>• Added parent resource name for server and device names.</li> </ul>
Maintenance Center	Maintenance Management	Device Update	Data is kept.
Access Control	Access Control Business	Access Control Console	Configuration is kept.
Access Control	Access Control Business	Access Control Record	Data is kept.
Lift Control	Lift Control Business	Lift Control Console	Configuration is kept.
Lift Control	Lift Control Business	Lift Control Record	Data is kept.
Video Intercom	Video Intercom Business	Call Center	Configuration is kept.
Video Intercom	Video Intercom Business	Information Release	Data is kept.
Video Intercom	Video Intercom Business	Audio Talk Record	Data is kept.
Attendance	Attendance Business	Card Swiping Record	Data is kept.
Attendance	Attendance Business	Attendance Report	Data is kept.
Attendance	Attendance Business	Anomaly	Data is kept.
Attendance	Attendance Business	Overtime	Data is kept.
Attendance	Attendance Business	Out-of-office	Data is kept.
Visitor	Visitor Business	Visitor Management	Configuration is kept.
Visitor	Visitor Business	Visitor Record	Data is kept.

Category	Function Module	Function	Notes
Entrance/Exit Monitoring	Entrance/Exit Monitoring	Entrance/Exit Monitoring	Data is kept.
Vehicle Search	Vehicle Search	Entrance Record	Data is kept.
Vehicle Search	Vehicle Search	Exit Record	Data is kept.
Vehicle Search	Vehicle Search	Forced Exit Record	Data is kept.
Vehicle Search	Vehicle Search	Capture Record	Data is kept.
Visual Parking Lot	Visual Parking Lot	Visual Parking Lot	Data is kept.
People Counting	People Counting Business	Real-time People Flow	No update is involved.
People Counting	People Counting Business	Historical People Flow	Data is kept.
Heat Map Analysis	Business of Heat Map Analysis	Heat Map Analysis	Data is kept.
In-area People Counting Analysis	Business of In-area People Counting Analysis	In-area People Counting Analysis	Data is kept.
Download Center	Download Center	Download Center	Data is kept.
Local Picture	Local Picture	Local Picture	No update is involved.
Local Video	Local Video	Local Video	No update is involved.
Local Configuration	Local Configuration	Local Configuration	Configuration is kept.
Logs	Logs	Operator Logs	Data is kept.
Logs	Logs	Device Logs	No update is involved.
Logs	Logs	System Logs	Data is kept.
Logs	Logs	Service Log Debugging	Data is kept.
Help	Help	Help	Updated the user manual to V8.2.0.
Quick Commands	Quick Commands	Quick Commands	Configuration is kept.
Overview	Overview	Overview	No update is involved.
User Center	User Center	User Center	Updated version information to V8.2.0.
-	-	Service Logs	No update involved.
-	-	Service Configuration File	Configuration is kept.

## Appendix 2 DSS Express Function Notes

Category	Function Module	Function	Notes
-	-	Network Configuration	Configuration is kept.
-	-	Security Configuration	Configuration is kept.
Device	Add device	Device Management	<ul style="list-style-type: none"> <li>• Configuration is kept.</li> <li>• Check after the update: All videos channels are in main stream by default.</li> </ul>
Device	Add device	Organization Management	Data is kept.
Device	Device Configuration	Event Configuration	Configuration is kept.
Device	Device Configuration	Recording Plan	Configuration is kept.
Device	Device Configuration	Recording Storage Configuration	Configuration is kept.
Device	Device Configuration	Channel Binding	Configuration is kept.
Device	Device Configuration	Channel Configuration	Configuration is kept.
Device	Device Configuration	Device Configuration	Configuration is kept.
User	Role	Role Management	Data is kept.

Category	Function Module	Function	Notes
User	User	User Management	<ul style="list-style-type: none"> <li>• Configuration is kept.</li> <li>• Permissions for capturing images and saving videos to local PC are selected by default for administrators.</li> <li>• For persons and vehicles management, the name of the root organization is changed to All Persons and Vehicles.</li> <li>• Vehicles that are not linked to any person will be placed under All Persons and Vehicles. Vehicles that are linked to persons will be placed in the same organizations as the persons.</li> <li>• Permissions to access all person and vehicle groups, face comparison groups, access control groups, and vehicle arming groups will be granted to administrators by default.</li> </ul>
Storage	Storage	Local Server Disk	Configuration is kept.
Storage	Storage	Device Storage Configuration	Configuration is kept.
Storage Plan	Recording Plan	Regular Recording Plan	Configuration is kept.
Storage Plan	Recording Plan	Motion-detecting Recording Plan	Configuration is kept.
Event	Event	Event Configuration	<ul style="list-style-type: none"> <li>• Configuration is kept.</li> <li>• After update, historical vehicle arming alarms will display the brands of vehicles, but not the color; historical vehicle blocklist alarms will display both the brands and colors of vehicles.</li> </ul>
Map	Map	Map Configuration	Configuration is kept.
Personnel & Vehicle Management	Personnel List	Personnel Group	Data is kept.

Category	Function Module	Function	Notes
Personnel & Vehicle Management	Personnel List	Personnel	Data is kept.
Personnel & Vehicle Management	Vehicle List	Vehicle Management	Data is kept.
Arming List	Face Arming List	Face Comparison Group	Data is kept.
Arming List	Vehicle Arming List	Vehicle Arming Group	Data is kept.
Access Control	Door Group	Door Group Configuration	Configuration is kept.
Access Control	Door Group	Time Template	Configuration is kept.
Access Control	Door Group	Holiday Management	Configuration is kept.
Access Control	Access Control Group	Access Control Group	Configuration is kept.
Access Control	Public Password	Public Password	Configuration is kept.
Access Control	Advanced Unlock Rule	Anti-Passback	Configuration is kept.
Access Control	Auto Sync Records	Auto Sync Records	New function. <ul style="list-style-type: none"> <li>Deleted automatically synchronize records for attendance.</li> <li>If automatic synchronization was configured for attendance before update, it will be deleted after update, and you must configure again.</li> <li>Deleted auto sync attendance records. Added Auto Sync Records for both attendance and access control records.</li> </ul>
Video Intercom	Video Intercom	Call Management	Configuration is kept.
Video Intercom	Video Intercom	Residential Area Configuration	Configuration is kept.
Video Intercom	Video Intercom	Contact Synchronization	Configuration is kept.
Video Intercom	Video Intercom	Private Password	Configuration is kept.

Category	Function Module	Function	Notes
Video Intercom	Video Intercom	App User	Configuration is kept.
Visitor	Visitor	Automatic Visit	Configuration is kept.
Visitor	Visitor	Automatic Leave	Configuration is kept.
Visitor	Visitor	Default Visitor Permission	Configuration is kept.
Visitor	Visitor	Email Template	Configuration is kept.
Visitor	Visitor	Pass Remark	Configuration is kept.
Parking Lot Management	Parking Lot Configuration	Basic Parking Lot Configuration	Configuration is kept.
Parking Lot Management	Parking Lot Configuration	Event Parameter Configuration	Configuration is kept.
Parking Lot Management	Entrance/Exit	Vehicle Group	Configuration is kept.
Intelligent Analysis	Intelligent Analysis	Configuration of People Counting Group	Configuration is kept, but the historical data must be converted by a tool.
Intelligent Analysis	Intelligent Analysis	Scheduled Report Configuration	Configuration is kept.
System Parameter	System Parameter	Security Configuration	Configuration is kept.
System Parameter	System Parameter	Message Keeping Duration	Configuration is kept.
System Parameter	System Parameter	Timing	Configuration is kept.
System Parameter	System Parameter	Email Server	Configuration is kept.
System Parameter	System Parameter	HTTPS	Configuration is kept.
System Parameter	System Parameter	Login Method	Configuration is kept.
System Parameter	System Parameter	Remote Logs	Configuration is kept.
Backup and Restore	Backup and Restore	Backup	Configuration is kept.
Backup and Restore	Backup and Restore	Restore	Configuration is kept.

Category	Function Module	Function	Notes
Login	Login	Forget Password	Configuration is kept.
Notification Center	Notification Center	-	Configuration is kept.
Multi-station	Multi-station	-	Configuration is kept.
User Information	-	-	Configuration is kept.
Monitoring	Live View	Live View	Configuration is kept.
Monitoring	Video Playback	Video Playback	Configuration is kept.
Video Wall	Video Wall	Video Wall Business	Configuration is kept.
Map	Map	Map	Data is kept.
Real-time Event	Real-time Event	Real-time Event	No update is involved.
History Event	History Event	History Event	Data is kept.
Intelligent Search	Intelligent Search	Record	Data is kept.
Intelligent Search	Intelligent Search	Personnel	Data is kept.
Intelligent Search	Intelligent Search	Vehicle	Data is kept.
Access Control	Access Control Business	Access Control Console	Configuration is kept.
Access Control	Access Control Business	Access Control Record	Data is kept.
Video Intercom	Video Intercom Business	Call Center	Configuration is kept.
Video Intercom	Video Intercom Business	Information Release	Data is kept.
Video Intercom	Video Intercom Business	Audio Talk Record	Data is kept.
Visitor	Visitor Business	Visitor Management	Configuration is kept.
Visitor	Visitor Business	Visitor Record	Data is kept.
Entrance/Exit Monitoring	Entrance/Exit Monitoring	Entrance/Exit Monitoring	Data is kept.

Category	Function Module	Function	Notes
Vehicle Search	Vehicle Search	Entrance Record	Data is kept.
Vehicle Search	Vehicle Search	Exit Record	Data is kept.
Vehicle Search	Vehicle Search	Forced Exit Record	Data is kept.
Vehicle Search	Vehicle Search	Capture Record	Data is kept.
People Counting	People Counting Business	Real-time People Flow	No update is involved.
People Counting	People Counting Business	Historical People Flow	Data is kept.
Heat Map Analysis	Business of Heat Map Analysis	Heat Map Analysis	Data is kept.
In-area People Counting Analysis	Business of In-area People Counting Analysis	In-area People Counting Analysis	Data is kept.
Download Center	Download Center	Download Center	Data is kept.
Local Picture	Local Picture	Local Picture	No update is involved.
Local Video	Local Video	Local Video	No update is involved.
Local Configuration	Local Configuration	Local Configuration	Configuration is kept.
Logs	Logs	Operator Logs	Data is kept.
Logs	Logs	Device Logs	No update is involved.
Logs	Logs	System Logs	Data is kept.
Logs	Logs	Service Log Debugging	Data is kept.
Help	Help	Help	Updated the user manual to V8.2.0.
Quick Commands	Quick Commands	Quick Commands	Configuration is kept.
Overview	Overview	Overview	No update is involved.
User Center	User Center	User Center	Updated version information to V8.2.0.
-	-	Service Logs	No update is involved.



Category	Function Module	Function	Notes
-	-	Service Configuration File	Configuration is kept.

## Appendix 3 Cybersecurity Recommendations

### Security Statement

- If you connect the product to the Internet, you need to bear the risks, including but not limited to the possibility of network attacks, hacker attacks, virus infections, etc., please strengthen the protection of the network, platform data and personal information, and take the necessary measures to ensure the cyber security of platform, including but not limited to use complex passwords, regularly change passwords, and timely update platform products to the latest version, etc. Dahua does not assume any responsibility for the product abnormality, information leakage and other problems caused by this, but will provide product-related security maintenance.
- Where applicable laws are not expressly prohibited, for any profit, income, sales loss, data loss caused by the use or inability to use this product or service, or the cost, property damage, personal injury, service interruption, business information loss of purchasing alternative goods or services, or any special, direct, indirect, incidental, economic, covering, punitive, special or ancillary damage, regardless of the theory of liability (contract, tort, negligence, or other) , Dahua and its employees, licensors or affiliates are not liable for compensation, even if they have been notified of the possibility of such damage. Some jurisdictions do not allow limitation of liability for personal injury, incidental or consequential damages, etc., so this limitation may not apply to you.
- Dahua's total liability for all your damages (except for the case of personal injury or death due to the company's negligence, subject to applicable laws and regulations) shall not exceed the price you paid for the products.

### Security Recommendations

#### **The necessary measures to ensure the basic cyber security of the platform:**

##### **1. Use Strong Passwords**

Please refer to the following suggestions to set passwords:

- The length should not be less than 8 characters.
- Include at least two types of characters; character types include upper and lower case letters, numbers and symbols.
- Do not contain the account name or the account name in reverse order.
- Do not use continuous characters, such as 123, abc, etc.
- Do not use overlapped characters, such as 111, aaa, etc.

##### **2. Customize the Answer to the Security Question**

The security question setting should ensure the difference of answers, choose different questions and customize different answers (all questions are prohibited from being set to the same answer) to reduce the risk of security question being guessed or cracked.

#### **Recommendation measures to enhance platform cyber security:**

##### **1. Enable Account Binding IP/MAC**

It is recommended to enable the account binding IP/MAC mechanism, and configure the IP/MAC of the terminal where the commonly used client is located as an allowlist to further

improve access security.

**2. Change Password Regularly**

We suggest that you change passwords regularly to reduce the risk of being guessed or cracked.

**3. Turn On Account Lock Mechanism**

The account lock function is enabled by default at the factory, and it is recommended to keep it on to protect the security of your account. After the attacker has failed multiple password attempts, the corresponding account and source IP will be locked.

**4. Reasonable Allocation of Accounts and Permissions**

According to business and management needs, reasonably add new users, and reasonably allocate a minimum set of permissions for them.

**5. Close Non-essential Services and Restrict the Open Form of Essential Services**

If not needed, it is recommended to turn off NetBIOS (port 137, 138, 139), SMB (port 445), remote desktop (port 3389) and other services under Windows, and Telnet (port 23) and SSH (port 22) under Linux. At the same time, close the database port to the outside or only open to a specific IP address, such as MySQL (port 3306), to reduce the risks faced by the platform.

**6. Patch the Operating System/Third Party Components**

It is recommended to regularly detect security vulnerabilities in the operating system and third-party components, and apply official patches in time.

**7. Security Audit**

- Check online users: It is recommended to check online users irregularly to identify whether there are illegal users logging in.
- View the platform log: By viewing the log, you can get the IP information of the attempt to log in to the platform and the key operation information of the logged-in user.

**8. The Establishment of a Secure Network Environment**

In order to better protect the security of the platform and reduce cyber security risks, it is recommended that:

- Follow the principle of minimization, restrict the ports that the platform maps externally by firewalls or routers, and only map ports that are necessary for services.
- Based on actual network requirements, separate networks: if there is no communication requirement between the two subnets, it is recommended to use VLAN, gatekeeper, etc. to divide the network to achieve the effect of network isolation.

## More information

Please visit Dahua official website security emergency response center for security announcements and the latest security recommendations.

ENABLING A SAFER SOCIETY AND SMARTER LIVING

ZHEJIANG DAHUA VISION TECHNOLOGY CO., LTD.

Address: No.1199 Bin'an Road, Binjiang District, Hangzhou, P. R. China | Website: [www.dahuasecurity.com](http://www.dahuasecurity.com) | Postcode: 310053

Email: [overseas@dahuatech.com](mailto:overseas@dahuatech.com) | Fax: +86-571-87688815 | Tel: +86-571-87688883