



DSS Professional V8.002.0000000.0.R

Release Notes



Legal Information

Copyright

© 2022 ZHEJIANG DAHUA VISION TECHNOLOGY CO., LTD. All rights reserved.

This document cannot be copied, transferred, distributed, or saved in any form without the prior written permission of Zhejiang Dahua Vision Technology Co., LTD (hereinafter referred to as "Dahua").

The products described in this document may contain the software that belongs to Dahua or the third party. Without the prior written approval of the corresponding party, any person cannot (including but not limited to) copy, distribute, amend, abstract, reverse compile, decode, reverse engineer, rent, transfer, sublicense the software.

Trademarks

The image shows four variations of the Dahua logo (with "TECHNOLOGY" in smaller text below) and the HDCVI logo. The logos are arranged horizontally and separated by commas. The text "and HDCVI" follows the fourth logo. The text "are the trademarks or registered trademarks of Dahua." follows the entire set of logos.

All other company names and trademarks mentioned herein are the properties of their respective owners.

Disclaimer

- These release notes are for reference only. Slight differences might be found between the release notes and the product.
- Succeeding products and release notes are subject to change without notice.
- If there is any uncertainty or controversy, we reserve the right of final explanation.

Table of Contents

Legal Information	I
Release Notes	1
1.1 Basic Version Information.....	1
1.2 New and Optimized Functions	1
1.2.1 New Functions.....	1
1.2.2 Optimized Functions.....	3
1.2.3 Fixed Bugs.....	4
1.3 Description of New and Optimized Functions.....	5
1.3.1 Device Management	5
1.3.2 User Management.....	7
1.3.3 Authorization.....	8
1.3.4 Event.....	9
1.3.5 Person and Vehicle Management.....	13
1.3.6 Watch List.....	14
1.3.7 Monitoring Center.....	15
1.3.8 DeepXplore	17
1.3.9 Map.....	18
1.3.10 Alarm Controller.....	20
1.3.11 Access Control.....	21
1.3.12 Parking Lot.....	24
1.3.13 Intelligent Analysis	26
1.3.14 Maintenance Center.....	26
1.3.15 Download Center.....	29
1.3.16 Log.....	30
1.3.17 System Parameter Configuration	30
1.4 Operating System Compatibility Description.....	31

Release Notes

1.1 Basic Version Information

Product name	DSS Professional
Version	V8.002.0000000.0.R
Software package information	General_DSS-Professional_Win64_IS_V8.002.0000000.0.R.20221201.exe
OS requirements	CPU: Intel Xeon Silver 4114@2.2 GHz 10-core Processor Memory: 16 GB Network adapter: 1 Gbps Hard disk type: Enterprise-level HDD 1 TB Free space: No less than 500 GB
Release date	December 2022

1.2 New and Optimized Functions

1.2.1 New Functions

Module	Functions
Device management	<ul style="list-style-type: none">• When adding devices by IP addresses, you can add Hikivision encoders (NVR/DVR/IPC) through Hikivision protocol.• Supports configuring channel features for multiple channels at the same time.• Supports alarm input channels of IPCs added to an EVS.• Supports devices used on vehicles, including MXVR, MDVR, and MNVR.• Supports outdoor parking space available displays.• Supports siren output channels of alarm controllers.
User management	You can now control the permission for users to record videos and take snapshots of real-time videos.
Authorization	Displays the detailed information of each activation code on the PC client.
Event	<ul style="list-style-type: none">• Supports DHOP events from devices.• Added events for video channels: Crowd detection, and tailing detection.• Added custom alarm that uses alarm codes to receive alarms from devices that are not listed on the platform. When triggered, these type of alarms will not upload snapshots to the platform.

Module	Functions
	<ul style="list-style-type: none"> ● Added combined event to trigger an alarm according to the relationship of the time of trigger for two alarms. ● Supports configuring a holiday template so that an alarm will not be triggered during the defined period. ● Supports configuring trigger intervals for alarms so that only one alarm will be triggered during the defined interval.
Person and vehicle management	<ul style="list-style-type: none"> ● Vehicles can now be managed by groups. Persons and vehicles use the same groups. ● Added permission control for person and vehicle groups. Only the selected roles and their users can access the group.
Watch list	<p>Added permission face comparison groups and vehicle arming groups. Only the selected roles and their users can access the group.</p>
Monitoring center	<ul style="list-style-type: none"> ● When viewing real-time videos or playing back videos, detection area and exclusion area can be overlaid on the window. ● You can now use different functions of the monitoring center with video channels of walk-through metal detectors.
Map	<ul style="list-style-type: none"> ● Added radar-PTZ linkage. ● Displays real-time locations of devices used on vehicles. ● Displays all alarms in a list. Click an alarm to locate the alarm source. ● Displays alarm output channels.
Access control	<ul style="list-style-type: none"> ● If access control devices go offline and then online again, the platform can automatically synchronize the records from them during that period at the defined time. ● Added lift control permission groups to assign lift control permissions in batches. ● Added permission control for access permission groups. Only the selected roles and their users can access the group. ● Logs will be generated for users unlocking doors on the client. The names of the users who unlock a door on the client will be displayed.
Parking lot	<ul style="list-style-type: none"> ● Added a statistics dashboard to display data of parking lots that the current user has access to. The data include parking spaces, vehicles entered and exited, vehicles currently in the parking lot, parking turnover rate, and rate of parking space usage. ● Added the vehicle search function so that owners can find their vehicles through the vehicle search system. The system can be access through a webpage on the computer, or a QR code to open an H5 page on the phone. ● Displays the available parking spaces from outdoor parking space available displays. ● Supports using IPC to count outdoor parking spaces.
Intelligent analysis	<ul style="list-style-type: none"> ● Supports displaying the number of people that passed by. ● Supports turning off calibrating the number of people staying every day.
System parameter configuration	<ul style="list-style-type: none"> ● Supports managing the VoIP certificate for app. ● Supports turning on or off the push notification function and adding devices through P2P.

Module	Functions
Logs	<ul style="list-style-type: none"> Supports searching for devices logs from IPCs, NVRs, and alarm controllers. Supports downloading service logs.
App	<ul style="list-style-type: none"> DSS Agile VDP supports pop-up dialogs for incoming calls. Supports functions related to retail.
Others	<ul style="list-style-type: none"> Supports TLS1.2 email servers. Supports Windows 11. Supports Brazilian Portuguese.

1.2.2 Optimized Functions

Module	Function Description
Device management	<ul style="list-style-type: none"> You can now select "Other" for the manufacturers of ONVIF devices. You can configure the stream type of the video channels of ONVIF devices. Optimized how the platform acquires channels from devices based on the license information. This is to allow you to add a device even if the license prevents you from adding all the channels of that device to the platform. Supports viewing the local IP address and the IP address used for automatic registration for devices added by automatic registration. Updated the protocol for walk-through metal detectors to support up to 60 sectors.
Storage management	A tip is displayed when adding or modifying disk groups: When configuring a disk group, the capacity of the disks in the same group must be close to each other to allow storage data to be written in load balancing mode.
Authorization	Removed the limit on the activation codes that you can use.
System deployment	The information of the platforms is linked to the user logged in to the main platform. When the user logs in to the main platform again, the main platform will automatically connect to the other platforms.
Event	<ul style="list-style-type: none"> The platform will display the type of sound for audio exception, including alarm, cry, gunshot, explosion, scream, and crashing glass. Supports linking siren output channels of alarm controller. The brands, colors, and types of vehicles will be displayed for events that involve license plate recognition.
Person and vehicle management	When adding a person or editing a person's information, you can select vehicles that have been added to the platform for that person.
Monitrong center	<ul style="list-style-type: none"> When playing back videos stored on the platform, videos will be played by time instead of by files. This is to avoid jumpy videos caused by overlapped timeline. Supports going back to the main map when you are in a sub map. Logs will be generated for both starting and stopping playing back a video.
Video wall	When switching tour plans, NVDs will not go into a black screen, but display the last frame.

Module	Function Description
Map	<ul style="list-style-type: none"> When zooming out on the map, the same type of resources that are near each other will merge into one point. Manufacturers of devices will not be displayed.
Alarm controller	Updated the name of each arming status: All, away arm, home arm, and disarmed.
DeepXplore	<ul style="list-style-type: none"> Added 58 vehicle categories for vehicle capture records, such as small-sized and large-sized vehicles. Added facial features for face capture records, including face mask, beard, and glasses.
Access control	<ul style="list-style-type: none"> Supports up to 1,500 public passwords. Supports manually refreshing the list of app users. Supports editing fence station call groups.
Parking lot	Optimized the display of parking duration to day/hour/minute/second for parking overtime and parking records.
Intelligent analysis	People counting and calibration will be performed according to the time zone of devices.
Maintenance center	<ul style="list-style-type: none"> Revamped the pages of Overview, Server Status, Device Status, and Faults. Information that can be sent on a scheduled report now includes service information, device status list, and faults.
Download center	When downloading videos stored on devices by timeline, you can choose videos recorded in main stream or sub stream.
Others	<ul style="list-style-type: none"> Optimized the protection mechanism for when the power to the server is unexpectedly disconnected. Sensitive information saved by the client will be encrypted.

1.2.3 Fixed Bugs

- The installation path of the PC client supports the system language. For example, if the system language is Chinese, the installation path of the PC client can contain Chinese characters.
- The login information became unreadable if you overwrote the existing PC client installation with a new one after the network card information was changed.
- The list of domain users was not refreshed after deleting invalid domain users.
- Devices added to the platform by automatic registration could not go online, and reasons were not provided.
- When configuring an event, alarm output channels of alarm controllers could not be linked.
- 2 alarms were reported when a device was offline and then online again.
- License plate numbers in Arabian were not correctly displayed.
- POS information was displayed in unreadable characters. Formats of POS information, such as location and color, could not be successfully configured.
- Persons could not be searched for using Bulgarian.

1.3 Description of New and Optimized Functions

1.3.1 Device Management

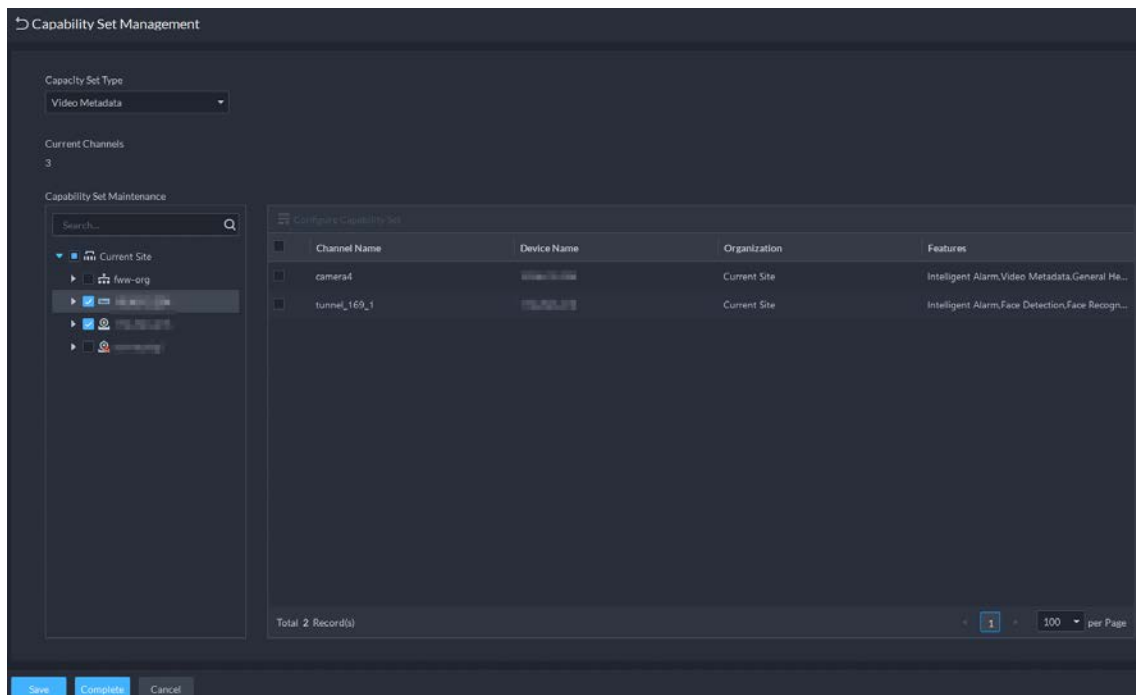
- Supports adding devices by Hikvision protocol
 - ◇ You can only add by an IP address.
 - ◇ IPCs, NVRs, and DVRs are supported.
 - ◇ The platform can log in to and log out of devices, obtain the number and names of channels, obtain the online status of channels (only for NVRs), obtain the online status of devices, reconnect to devices after they are offline, synchronize the time of devices, and configure the time zones of devices (but not locations).
 - ◇ You can configure events, center recording plans, retention periods for general and alarm videos, and bind channels for the device.
 - ◇ Other supported functions are as follows.

Table 1-1 Function description

Module	Function
Event configuration	<ul style="list-style-type: none"> ● Events for devices: Device disconnected, and disk full. ● Events for video channels: Video tampering, motion detection, tripwire, and intrusion. ● All linked actions are supported.
Storage	Videos and snapshots can only be saved on the platform.
Monitoring center	<ul style="list-style-type: none"> ● Only IPCs support voice intercom. ● PTZ control: Changing directions, zooming in and out, and adjusting focus and iris. ● Video playback: Playing at normal speed, pausing, stopping, slowing down or speeding up at maximum 16 times the normal speed, searching for videos stored on the platform by timeline, videos stored on the device, and alarm videos.
Download center	<ul style="list-style-type: none"> ● Video download: Videos stored on the platform and devices. ● Video search: By timeline and file.
Event center	Supports real-time and historical events, and event statistics.
Maintenance center	Supports overview, channel status, device status, server status, and faults (only for device disconnected and disk full for encoders).

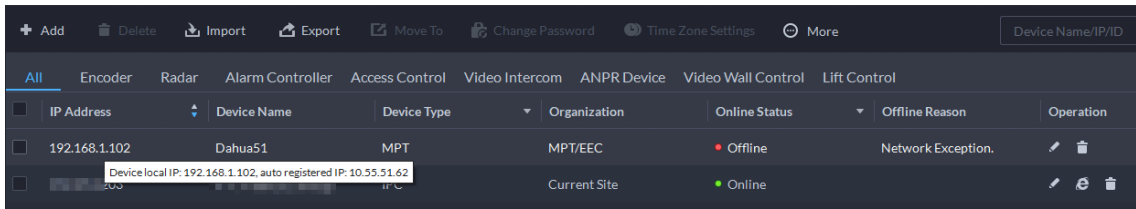
- Supports configuring channel features for multiple channels at the same time.

Figure 1-1 Configure channels features for multiple channels



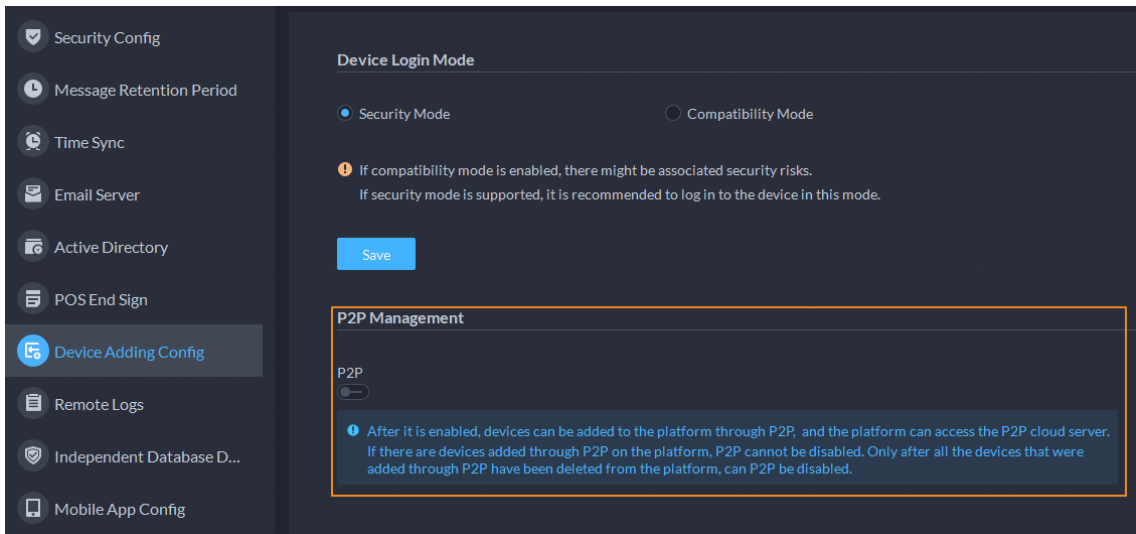
- Optimized how the platform acquires channels from devices based on the license information. This is to allow you to add a device even if the license prevents you from adding all the channels of that device to the platform.
 - ◇ When adding a device, the platform will obtain some channels if the number of a type of channels on the device exceeds the license limit.
 - ◇ Encoders: When you want to add devices through import, IP segment, or automatic registration but the license limit has been reached for video channels, they will be added to the List of Abnormally Added Devices.
 - ◇ Access control devices: When you want to add devices through import, IP segment, or automatic registration but the license limit has been reached for access control channels, they will be added to the List of Abnormally Added Devices.
 - ◇ Lift control devices: When you want to add devices through import, IP segment, or automatic registration but the license limit has been reached for lift control channels, they will be added to the List of Abnormally Added Devices.
 - ◇ The platform can only obtain certain channels if the platform cannot add all the channels of that channel feature. For example, there are 32 face recognition channels on an NVR but only 16 are allowed to be added to the platform, the platform will only obtain the first 16 channels.
 - ◇ The platform will obtain the information of devices added when they are offline, and by import, automatic registration, and IP segment, the platform will automatically obtain their information when they are online for the first time. This does not include devices added by ONVIF and Jiuzhou protocols.
- View the local IP address and the IP address used for automatic registration for devices added by automatic registration.

Figure 1-2 View IP addresses



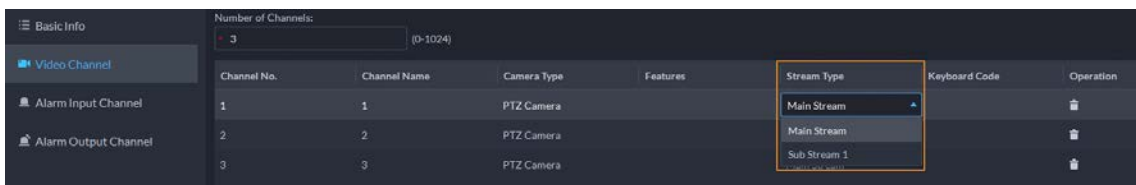
- Supports turning on or off adding devices by P2P. After turned off, you cannot add devices to the platform through P2P.

Figure 1-3 Turn on or off P2P



- You can configure the stream type of the video channels of ONVIF devices. When switching to the other stream type that you did not configure for a channel, the platform will prompt that you have no permission.

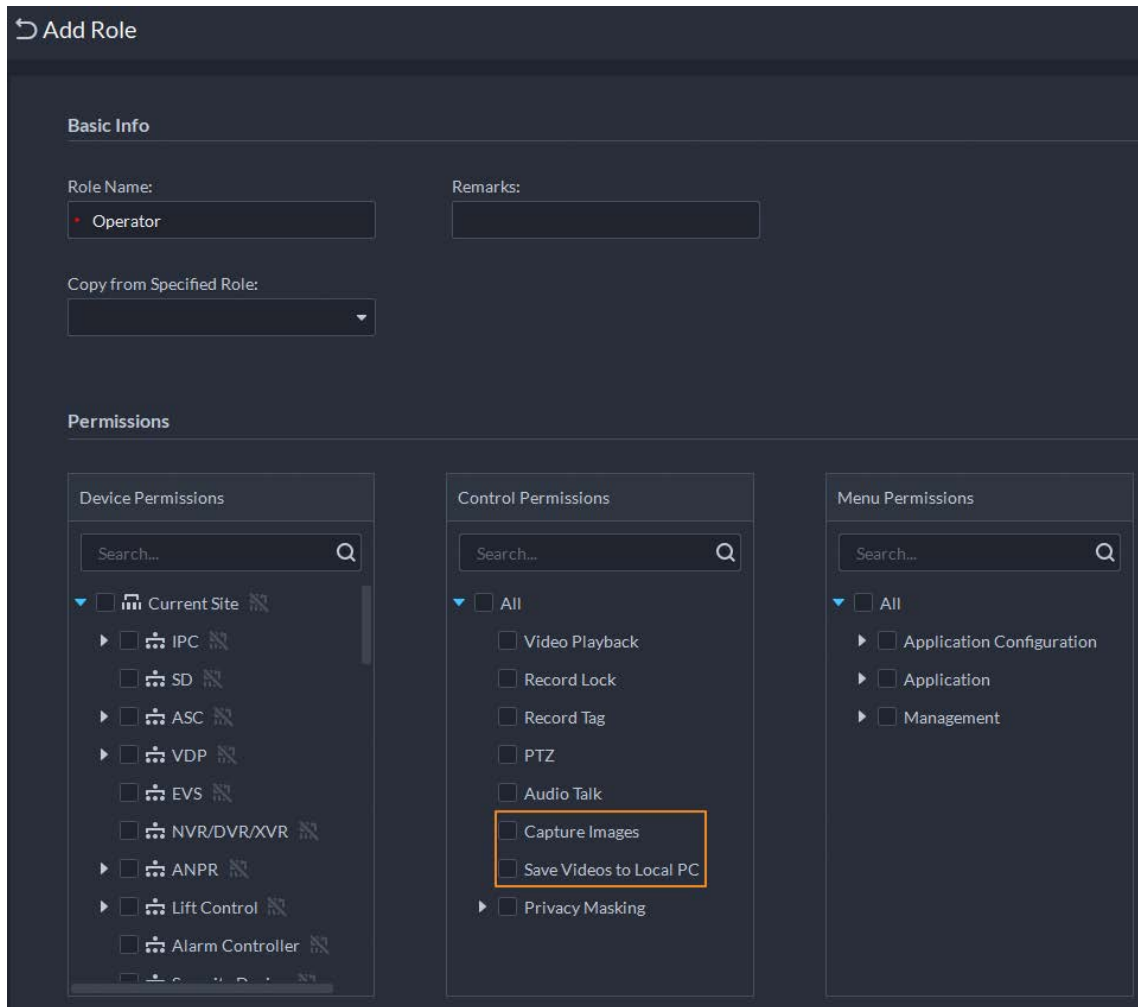
Figure 1-4 Configure stream type



1.3.2 User Management

You can now control the permission for users to record videos and take snapshots of real-time videos.

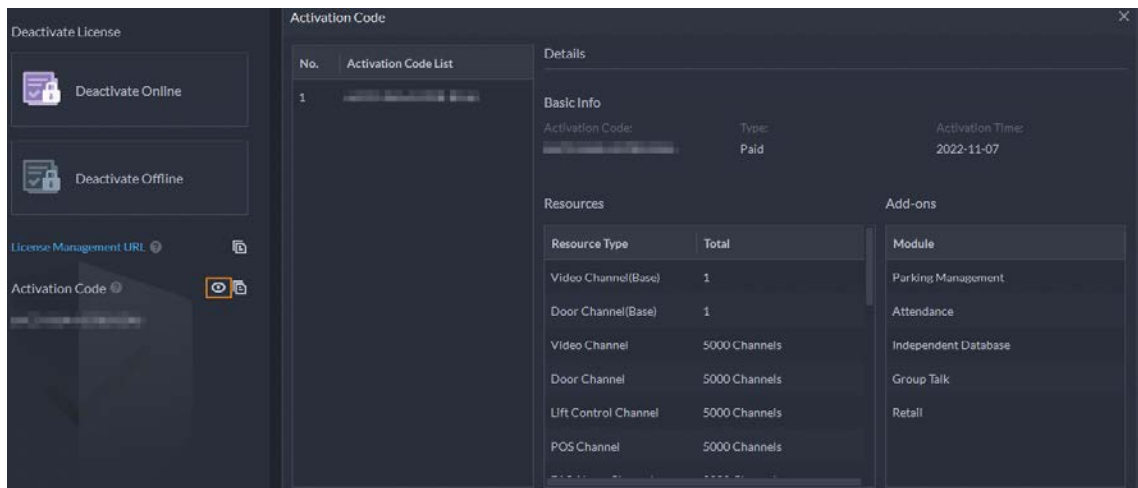
Figure 1-5 Permission control



1.3.3 Authorization

Displays the detailed information of each activation code on the PC client.

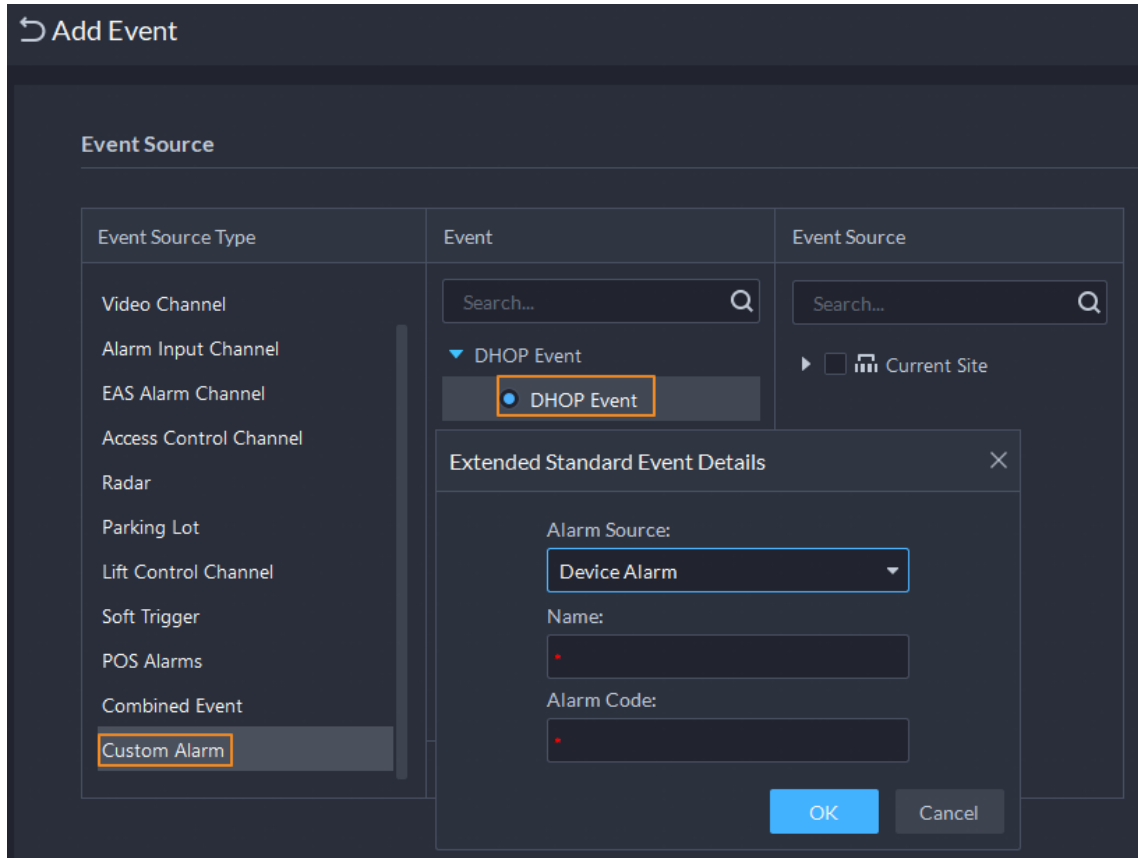
Figure 1-6 Activation code information



1.3.4 Event

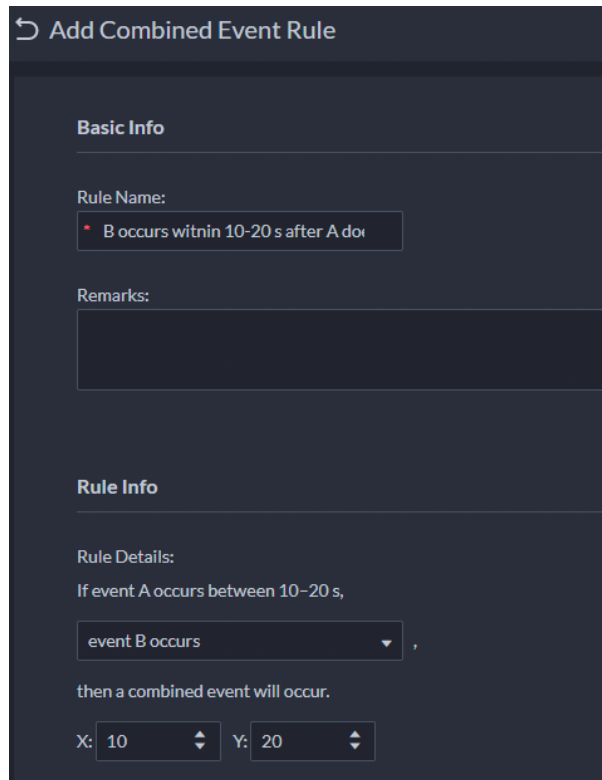
- Supports DHOP events.
- Supports custom alarm that uses alarm codes to receive alarms from devices that are not listed on the platform.

Figure 1-7 DHOP event and custom alarm



- Added combined event to trigger an alarm according to the relationship of the time of trigger for two alarms. For example, select event B occurs and configure the X and Y to be 10 and 50 seconds respectively. If event B occurs during the 10 seconds to 50 seconds after event A occurs, a combined event is triggered, and then the platform will perform defined linked actions.

Figure 1-8 Combined event



Add Combined Event Rule

Basic Info

Rule Name:

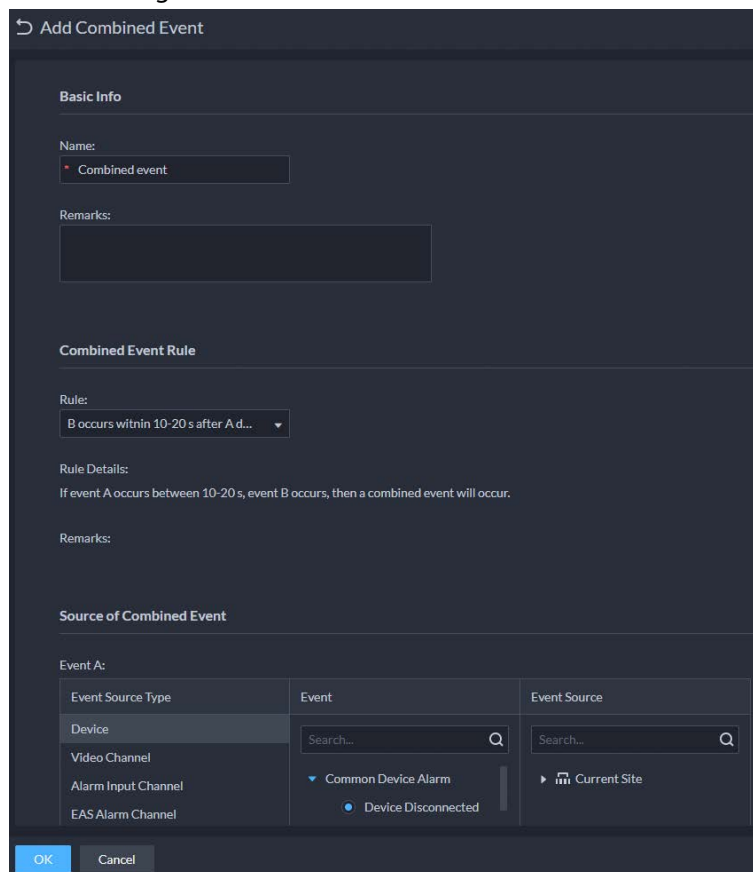
Remarks:

Rule Info

Rule Details:
 If event A occurs between 10-20 s,
 ,
 then a combined event will occur.

X: Y:

Figure 1-9 Add a combined event



Add Combined Event

Basic Info

Name:

Remarks:

Combined Event Rule

Rules:

Rule Details:
 If event A occurs between 10-20 s, event B occurs, then a combined event will occur.

Remarks:

Source of Combined Event

Event A:

Event Source Type	Event	Event Source
Device	<input type="text" value="Search..."/>	<input type="text" value="Search..."/>
Video Channel		
Alarm Input Channel	<ul style="list-style-type: none"> Common Device Alarm <ul style="list-style-type: none"> Device Disconnected 	<ul style="list-style-type: none"> Current Site
EAS Alarm Channel		

Figure 1-10 Configure linked actions for the event

Event Source

Event Source Type	Event	Event Source
Device	Search...	Search...
Video Channel	▼ Combined Event	<input type="checkbox"/> Select All
Alarm Input Channel	● B occurs within 10-20 s...	<input type="checkbox"/> Combined event ⓘ
EAS Alarm Channel		
Access Control Channel		
Radar		
Parking Lot		
Lift Control Channel		
Soft Trigger		
POS Alarms		
Combined Event		

Rule Details

If event A occurs between 10-20 s, event B occurs, then a combined event will occur.

Event Attributes

Priority: High

Time Template: All-Period Template

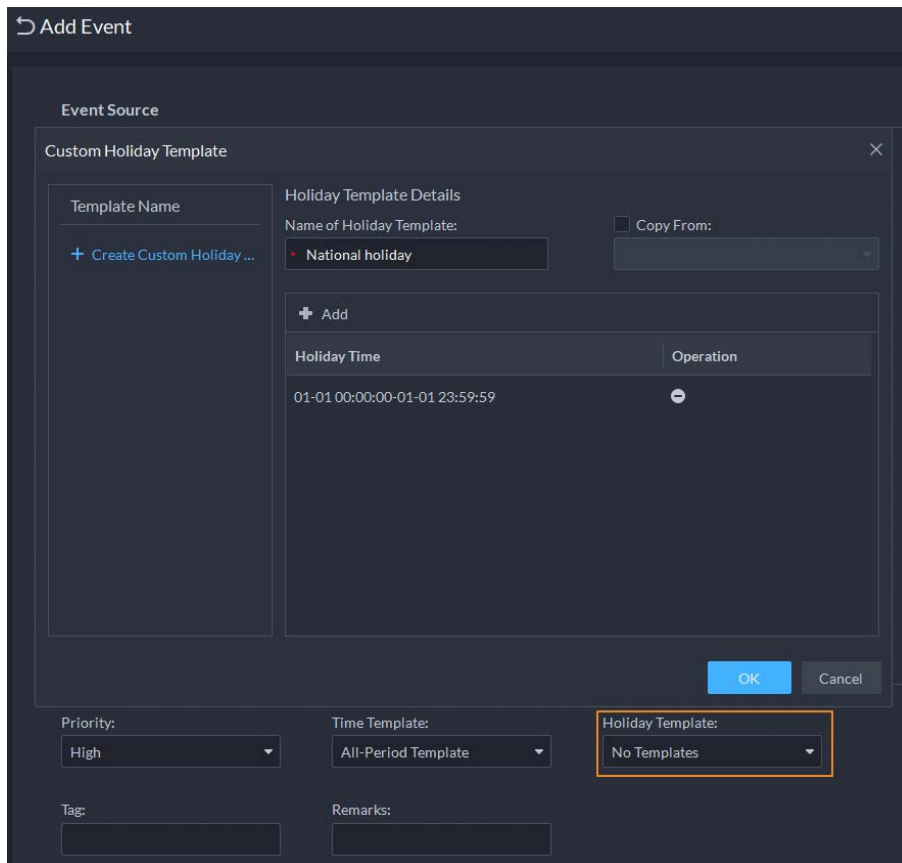
Tag:

Remarks:

OK Cancel

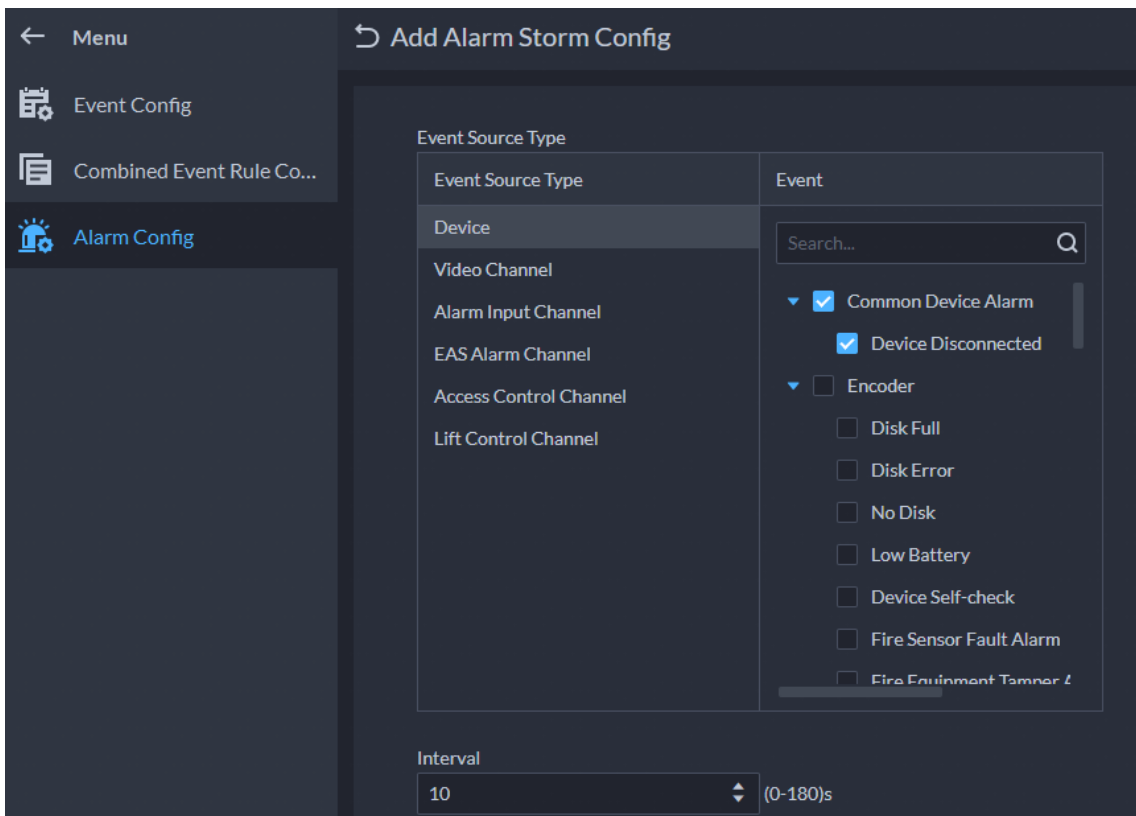
- Supports configuring a holiday template so that an alarm will not be triggered during the defined period.

Figure 1-11 Holiday template



- Supports configuring trigger intervals for alarms so that only one alarm will be triggered during the defined interval.

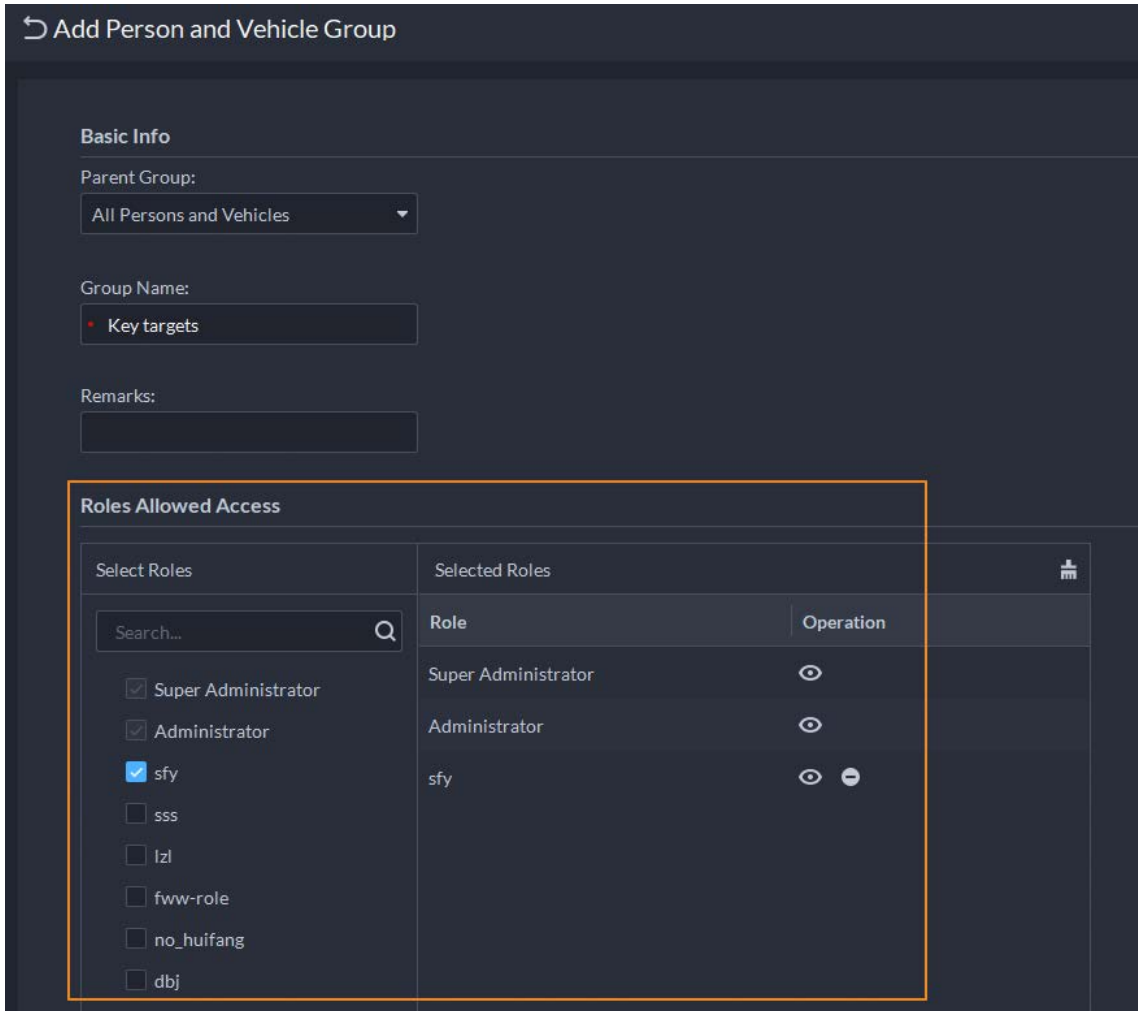
Figure 1-12 Alarm storm



1.3.5 Person and Vehicle Management

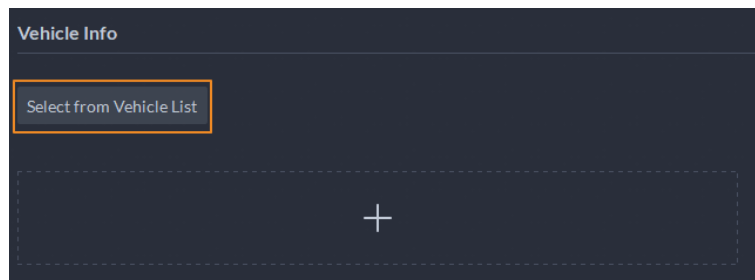
- Added permission control for person and vehicle groups. Only the selected roles and their users can access the group.

Figure 1-13 Permission control



- When adding or editing person information, you can select vehicles that have been added to the platform.

Figure 1-14 Select from vehicle list



1.3.6 Watch List

Added permission face comparison groups and vehicle arming groups. Only the selected roles and their users can access the group.

Figure 1-15 Permission control for face comparison group

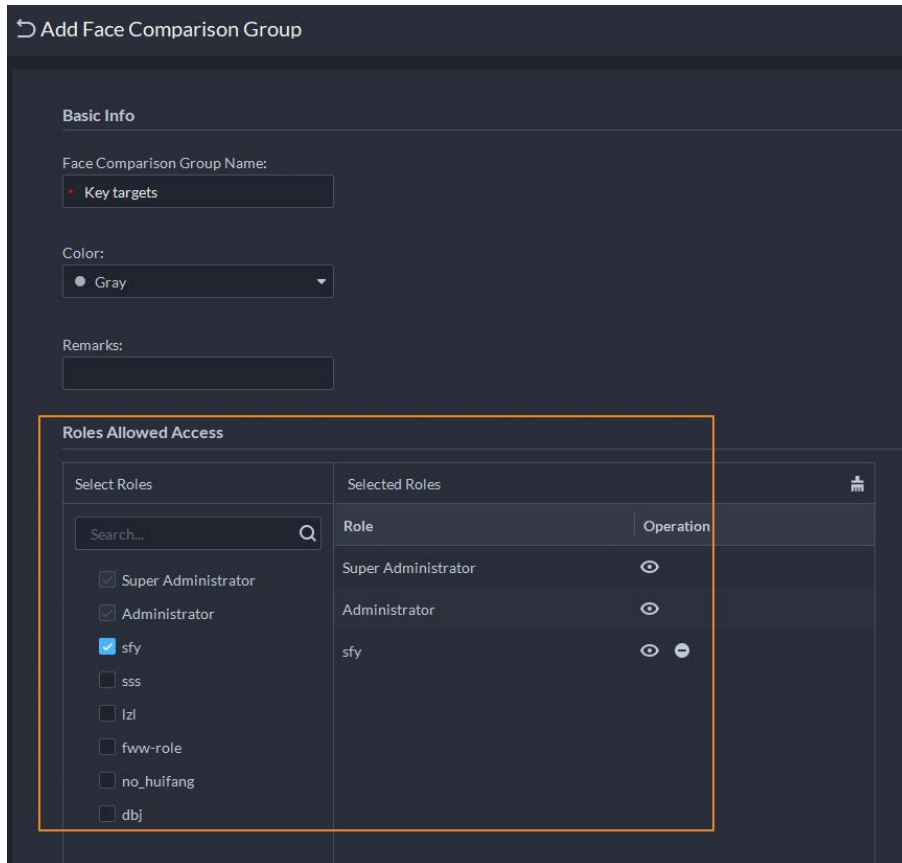
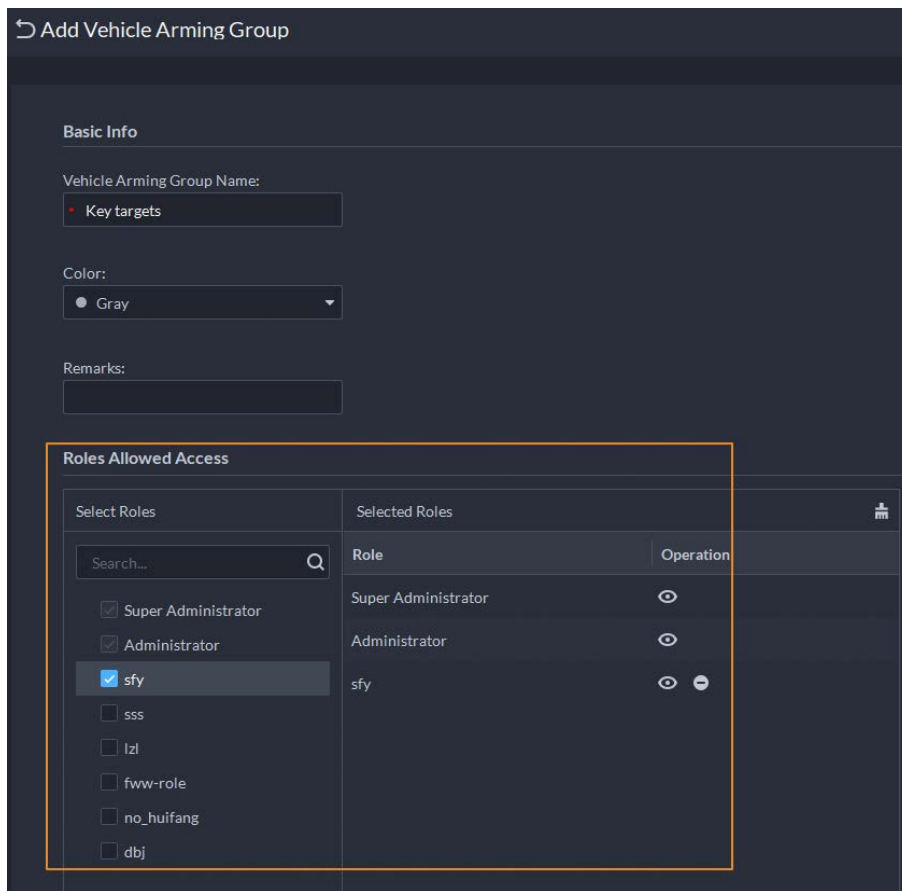


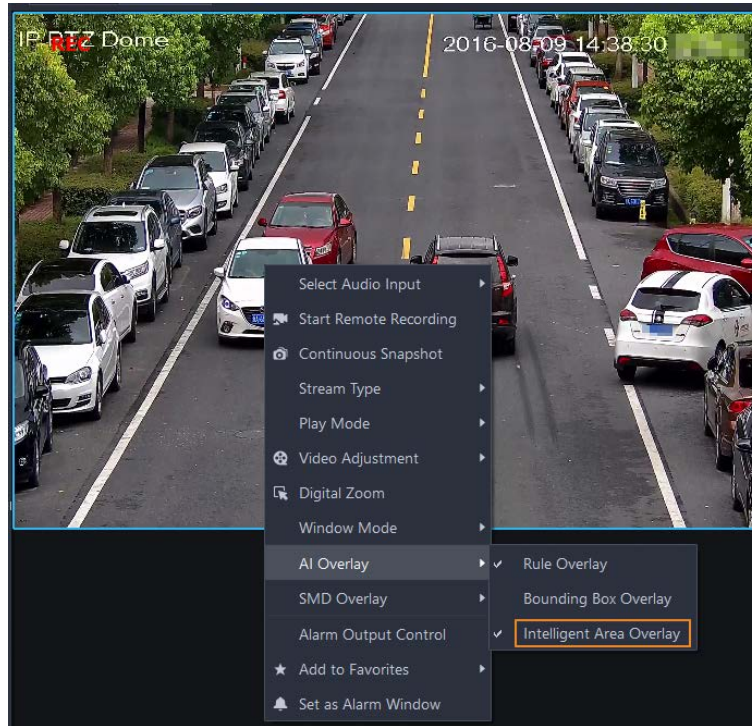
Figure 1-16 Permission control for vehicle arming group



1.3.7 Monitoring Center

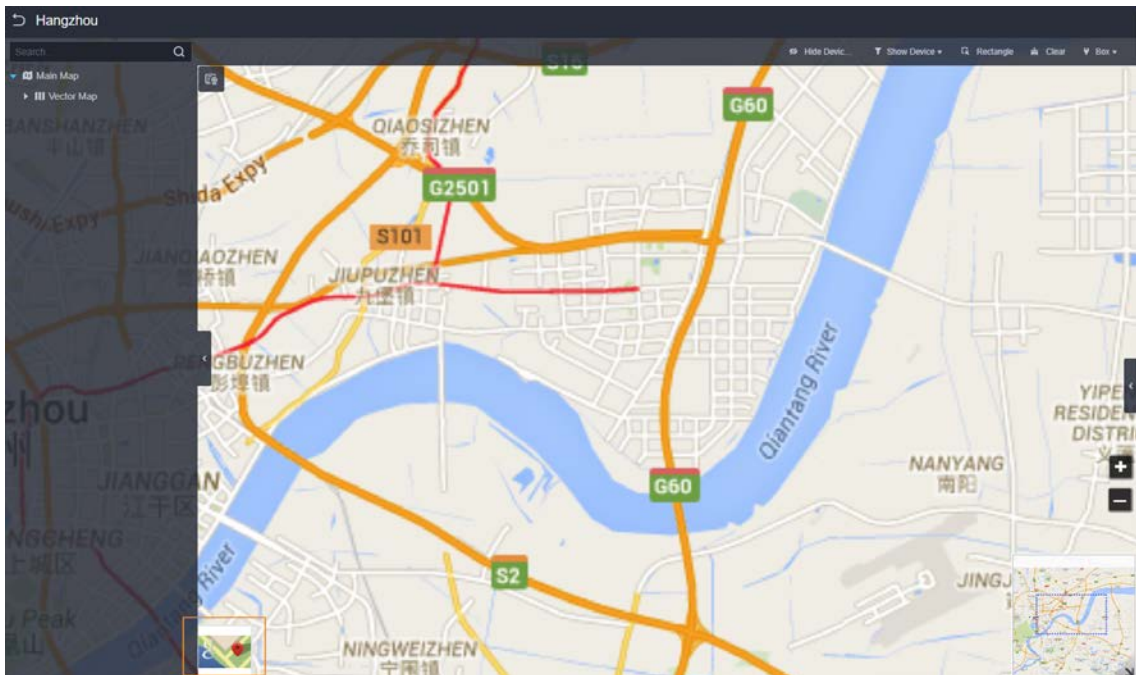
- When viewing real-time videos or playing back videos, detection area and exclusion area can be overlaid on the window.

Figure 1-17 Intelligent area



- Supports going back to the main map when you are in a sub map.

Figure 1-18 Go back to the main map



- Logs will be generated for both starting and stopping playing back a video.

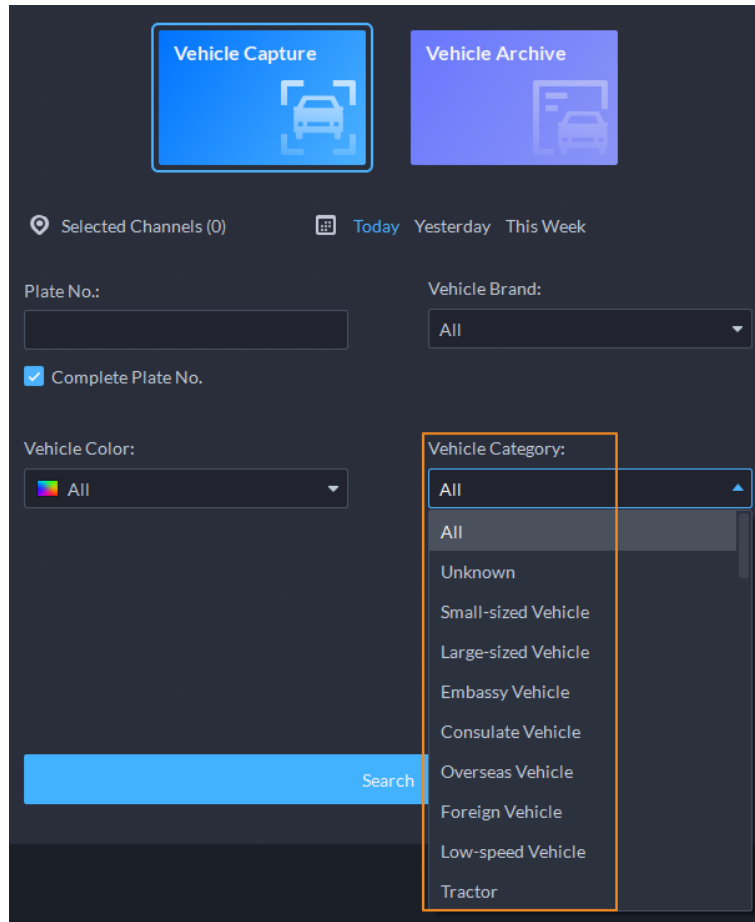
Figure 1-19 Playback logs

Time	Username	Log Type	Log Content
2022-11-22 19:18:19	system	Record Playback	Started playing the video [device name (chm-ipc1) dev...
2022-11-22 19:17:41	system	Record Playback	Stopped playing the video [device name (chm-ipc1) dev...
2022-11-22 19:17:25	system	Record Playback	Started playing the video [device name (chm-ipc1) dev...
2022-11-22 18:33:53	system	Record Playback	Started playing the video [device name (chm-ipc1) dev...

1.3.8 DeepXplore

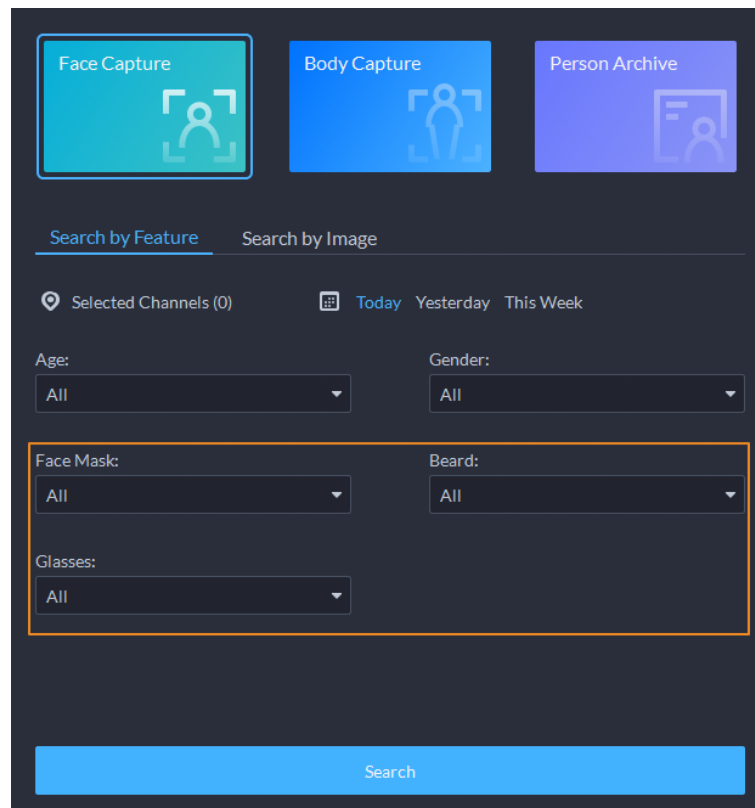
- Added 58 vehicle categories for vehicle capture records, such as small-sized and large-sized vehicles.

Figure 1-20 Vehicle category



- Added facial features for face capture records, including face mask, beard, and glasses.

Figure 1-21 Facial features



1.3.9 Map

- Add a radar and one or more PTZ cameras to the platform, and then configure related parameters. The detection area configured on the radar will be displayed on the map. After radar alarms are triggered, you can view real-time videos from the linked PTZ cameras.

Figure 1-22 Radar-PTZ linkage configuration

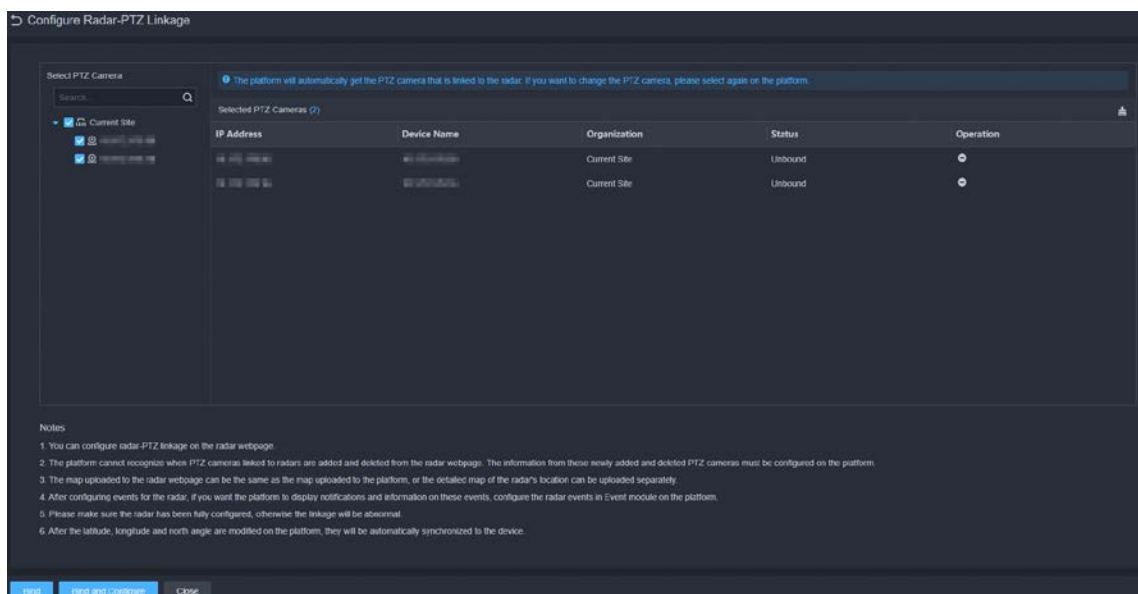


Figure 1-23 Detection area

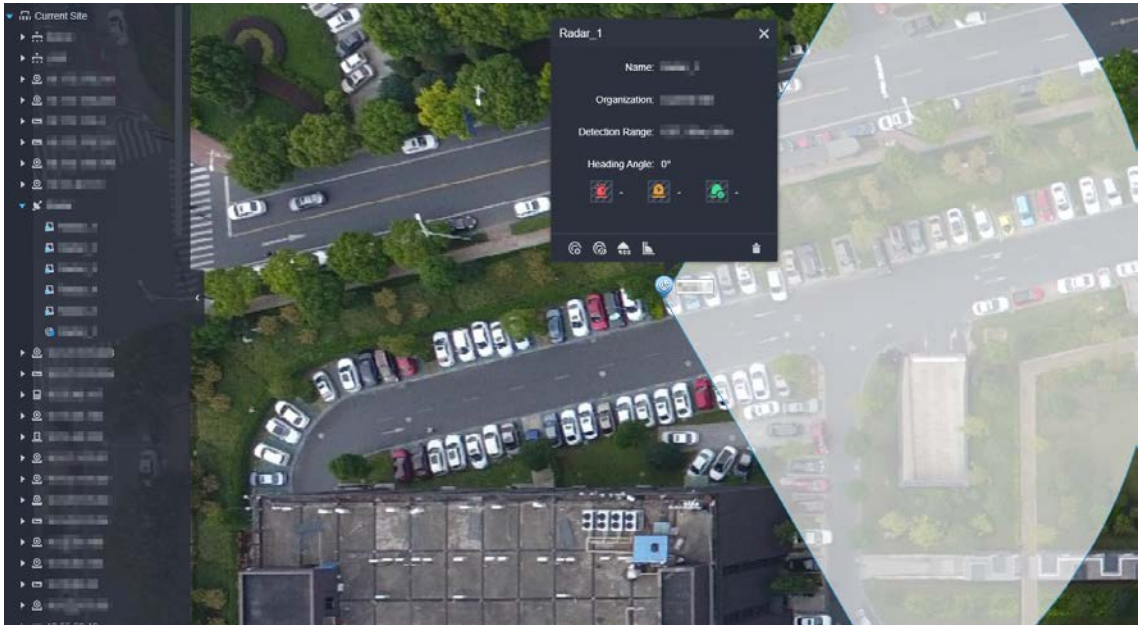
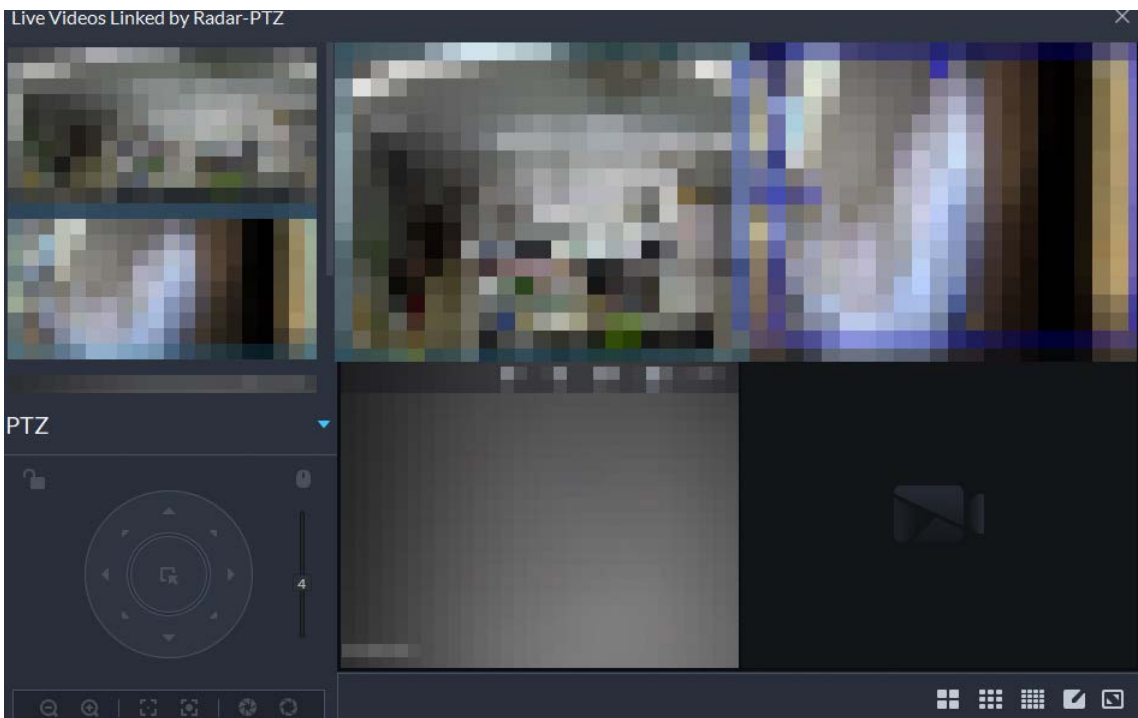
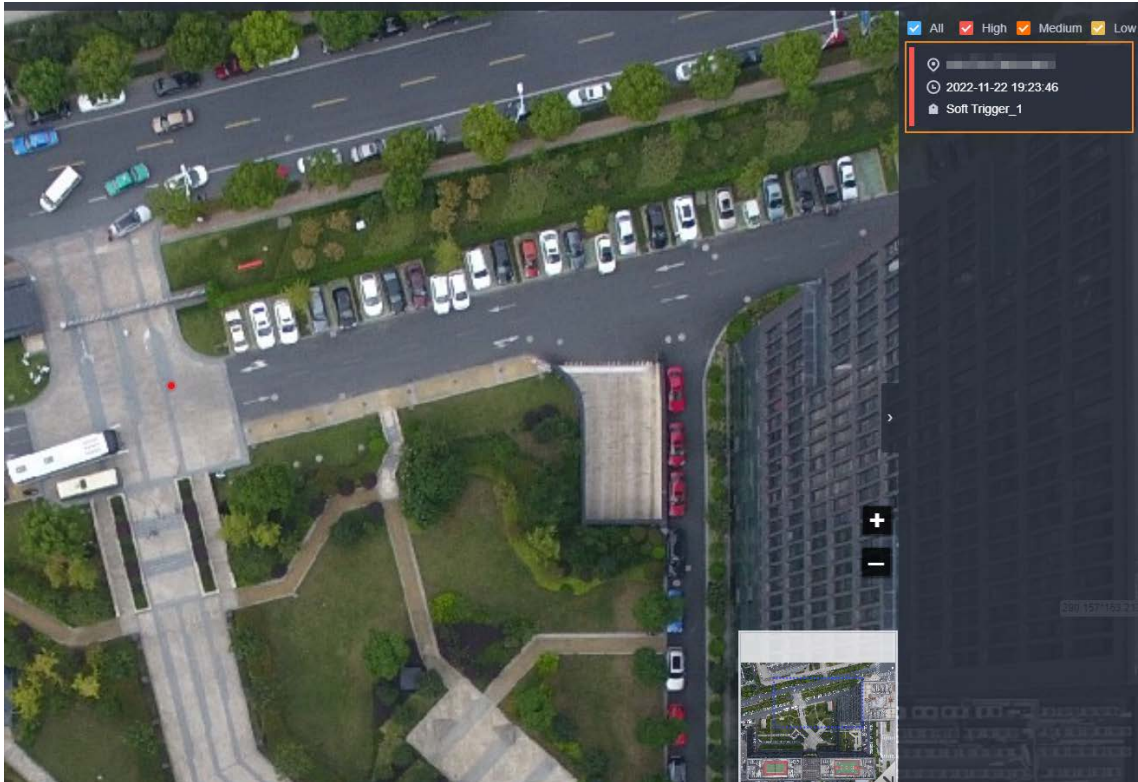


Figure 1-24 View real-time videos from linked PTZ cameras



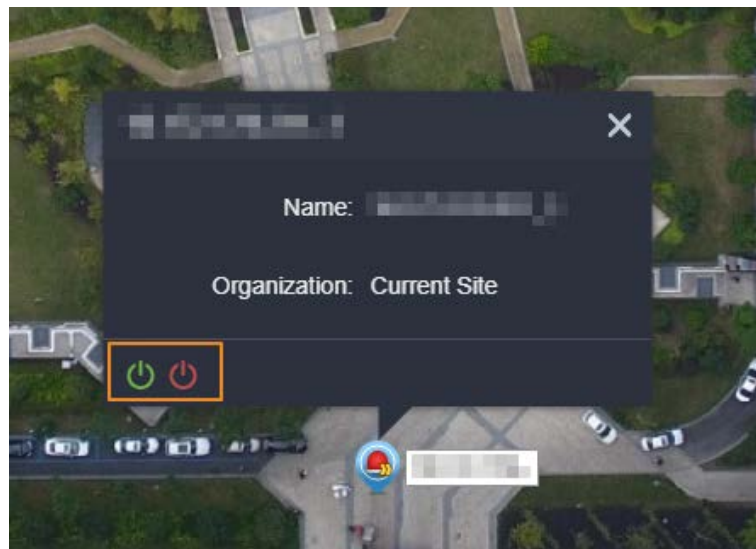
- All alarm sources will be displayed in a list. Click an alarm and the map will zoom in to the location of the device that triggered the alarm.

Figure 1-25 Alarm source and positioning



- Displays alarm output channels.

Figure 1-26 Alarm output channel



1.3.10 Alarm Controller

Updated the name of each arming status: All, away arm, home arm, and disarmed.

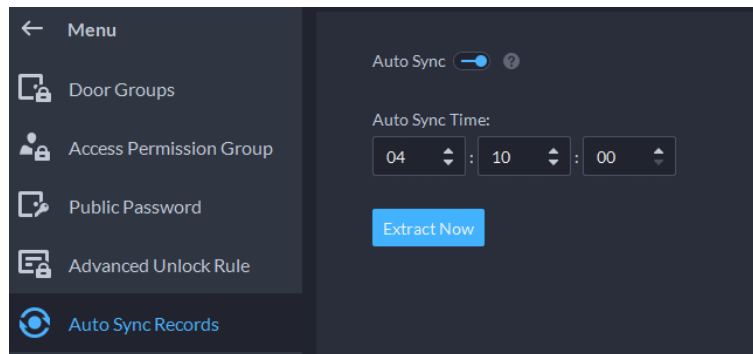
Figure 1-27 Updated arming status



1.3.11 Access Control

- If access control devices go offline and then online again, the platform can automatically synchronize records from them during that period at the defined time.

Figure 1-28 Automatically synchronize records



- Added lift control permission groups to assign lift control permissions in batches.

Figure 1-29 Lift control permission group

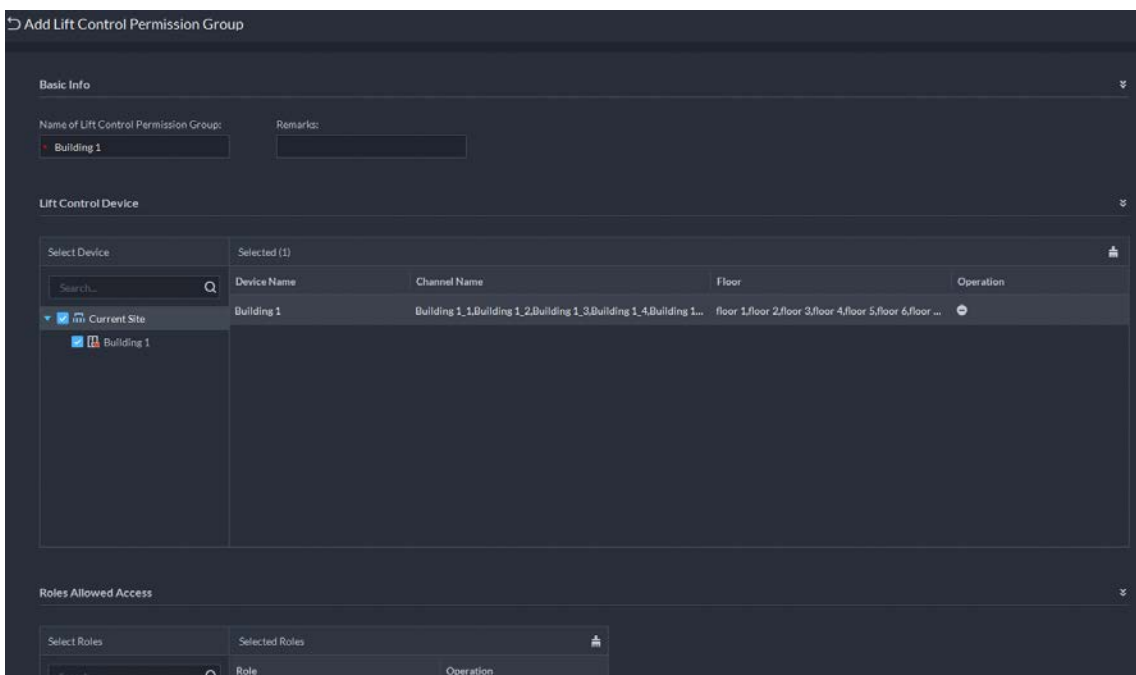
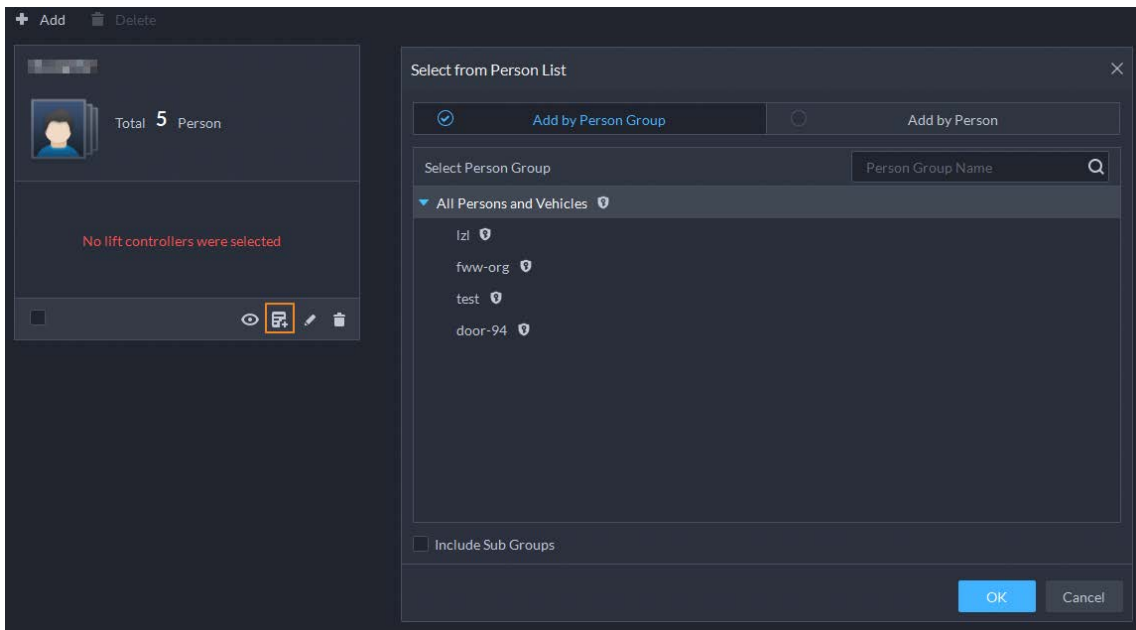
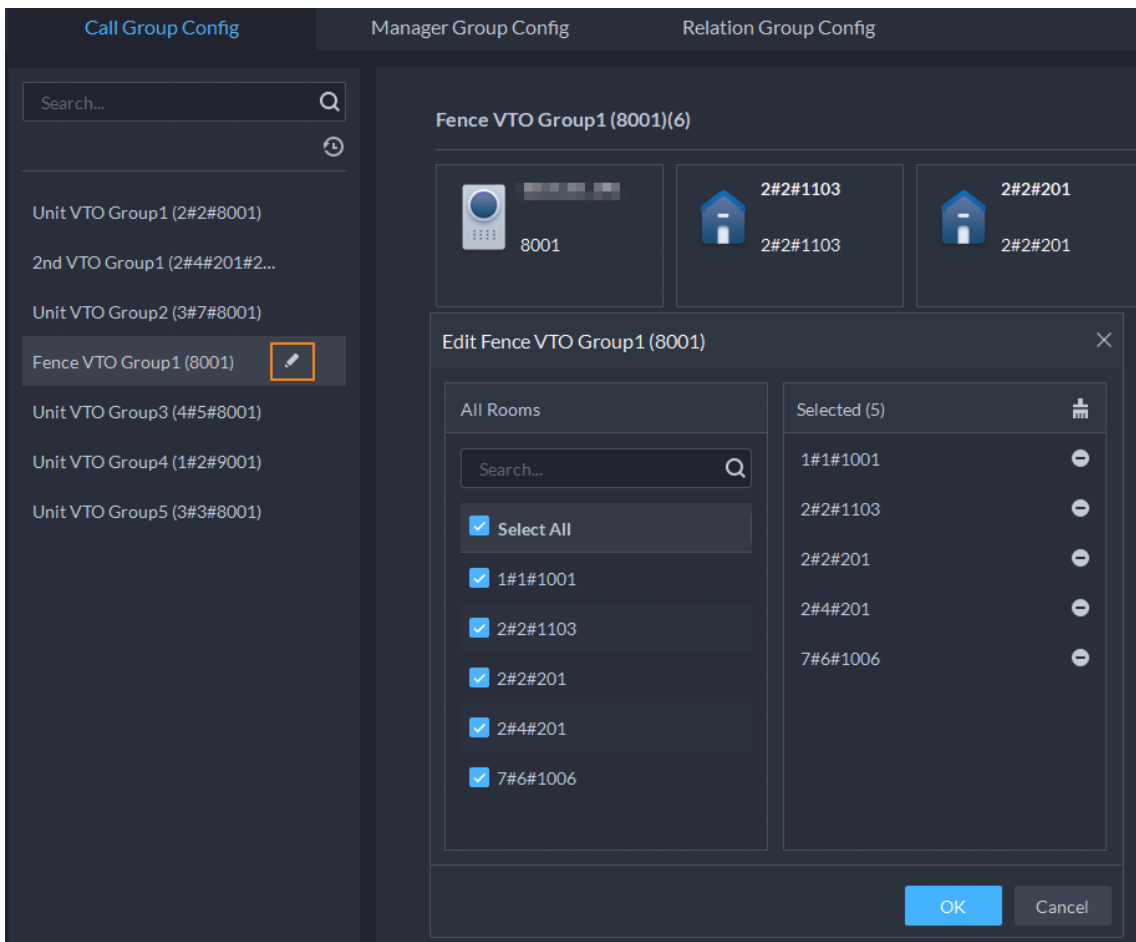


Figure 1-30 Assign permissions



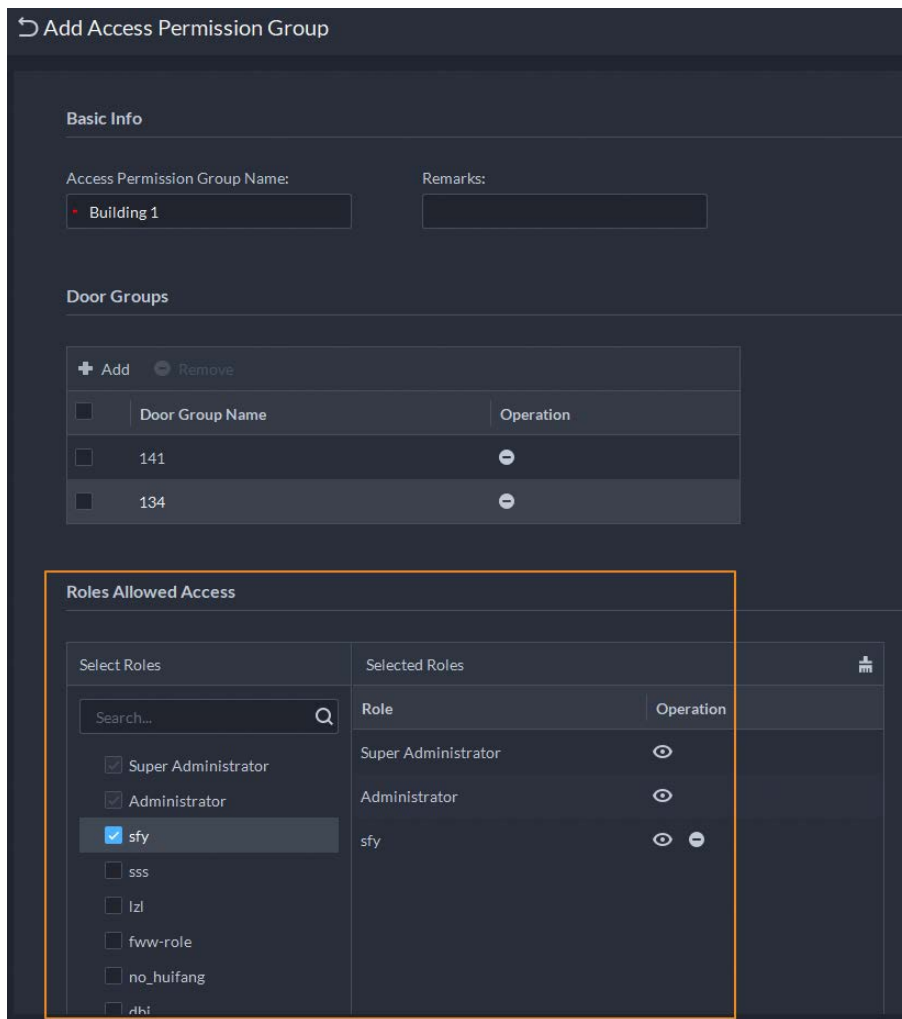
- Supports editing fence station call groups.

Figure 1-31 Edit a fence station call group



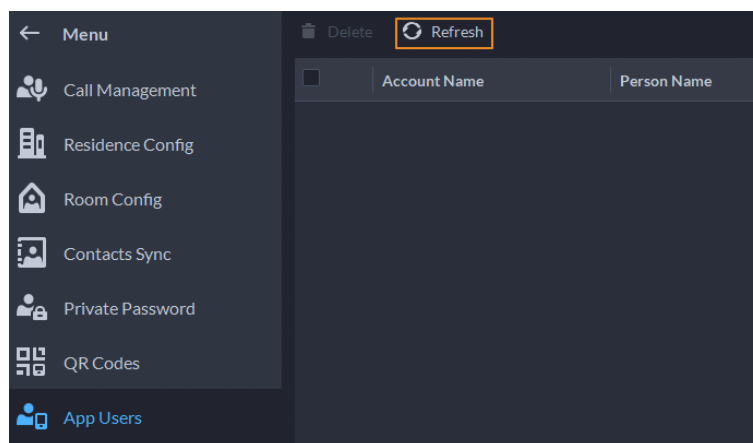
- Added permission access permission groups. Only the selected roles and their users can access the group.

Figure 1-32 Permission control



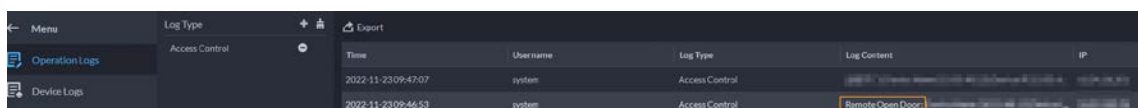
- Supports manually refreshing the list of app users.

Figure 1-33 Manually refresh



- Logs will be generated for users unlocking doors on the client. The names of the users who unlock a door on the client will be displayed.

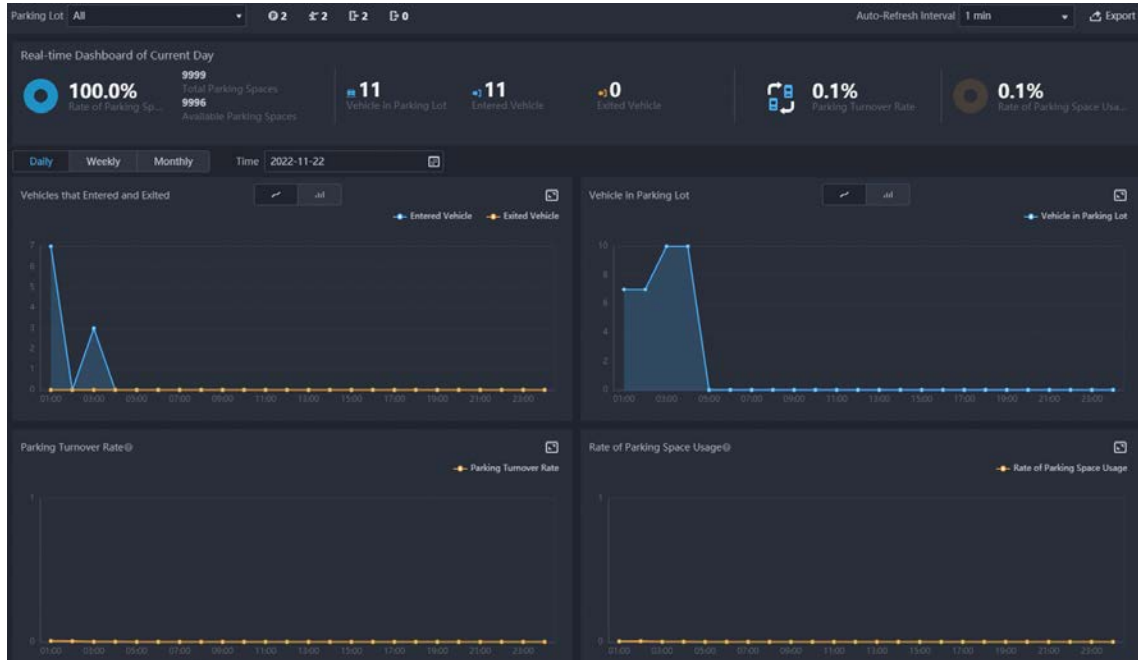
Figure 1-34 Log of remote unlock



1.3.12 Parking Lot

- Added a statistics dashboard to display data of parking lots that the current user has access to.

Figure 1-35 Statistics dashboard



- Added the vehicle search function so that owners can find their vehicles through the vehicle search system.

Figure 1-36 Enable vehicle search

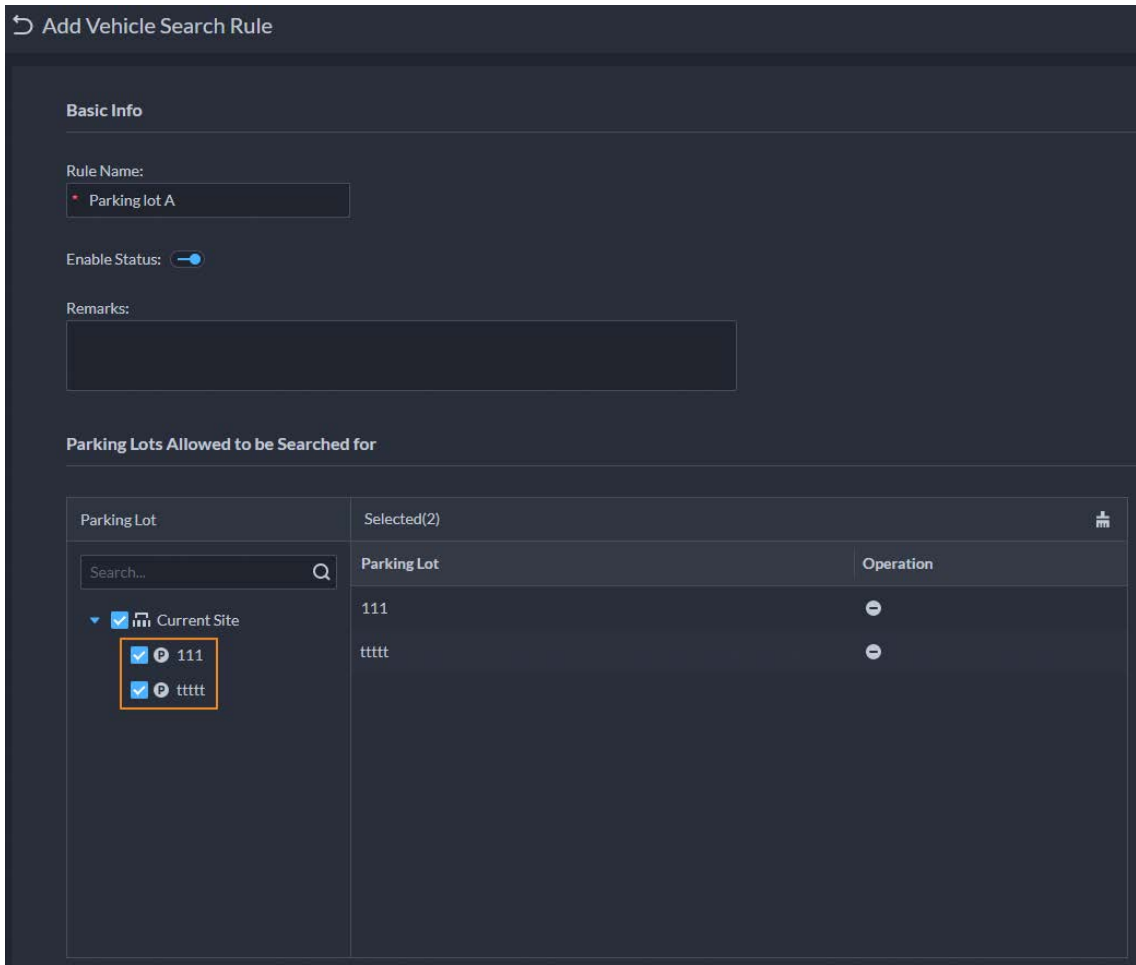
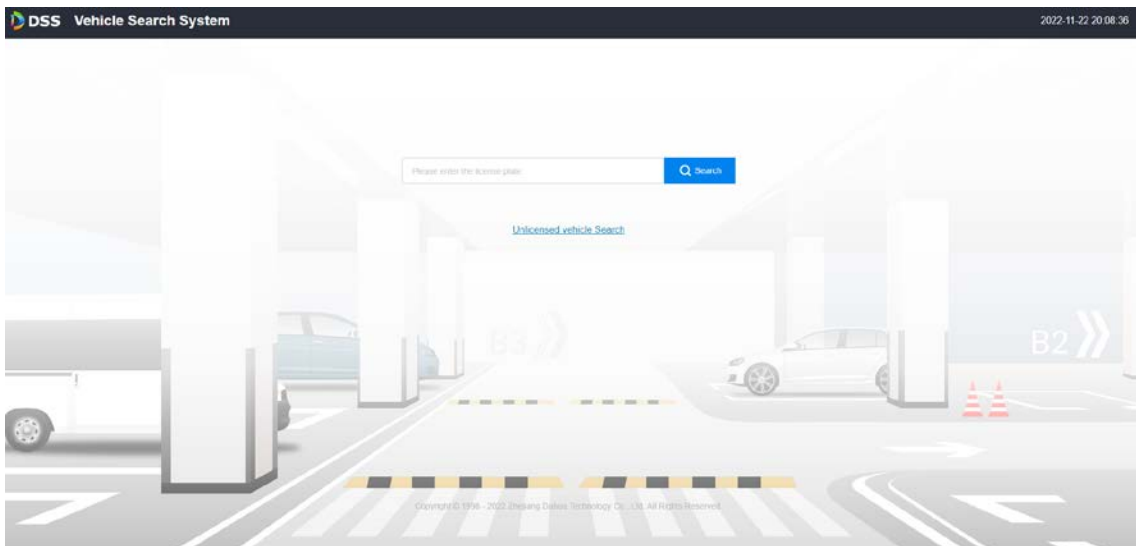


Figure 1-37 Search for vehicles on the vehicle search system



1.3.13 Intelligent Analysis

Supports displaying the number of people that passed by, and turning off calibrating the number of people staying every day.

Figure 1-38 People passed by and turn off number calibration

↶ Add People Counting Group

ⓘ The devices configured for the rule group must be in the same time zone to display the total number of people.

Basic Info

People Counting Group Name:
• East Shop

Pass No. ⓘ Displays the number of people passing when the device in use supports this function.

Calibrate Number of People Staying Everyday

Calibrate Number of People Staying Now

ⓘ The calibration will be done according to the time zone of the first device in the rule group.

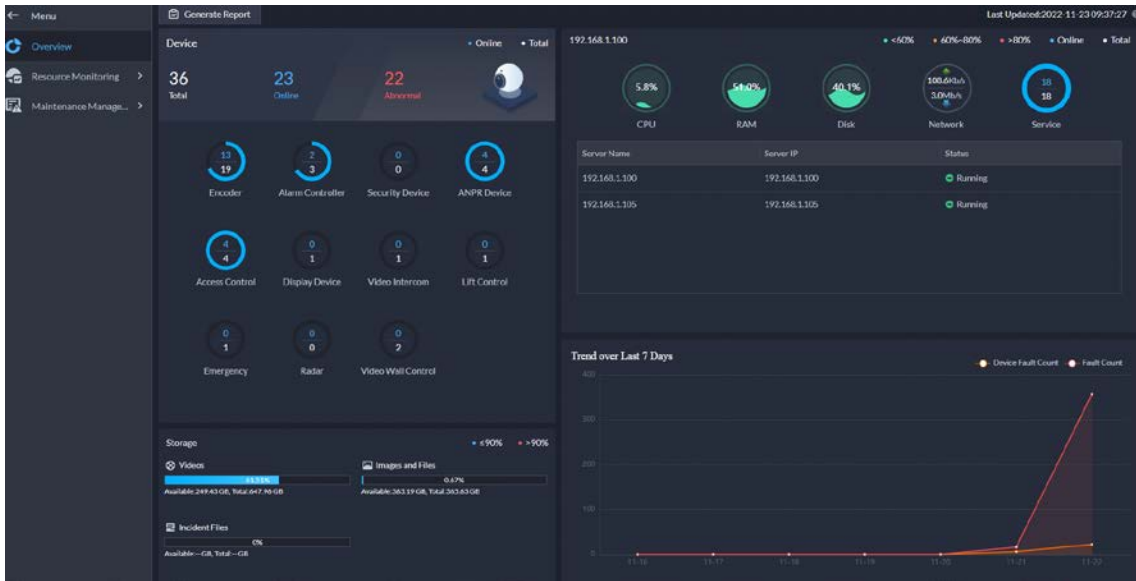
Calibrated Number of People:
0

Limit Number of People

1.3.14 Maintenance Center

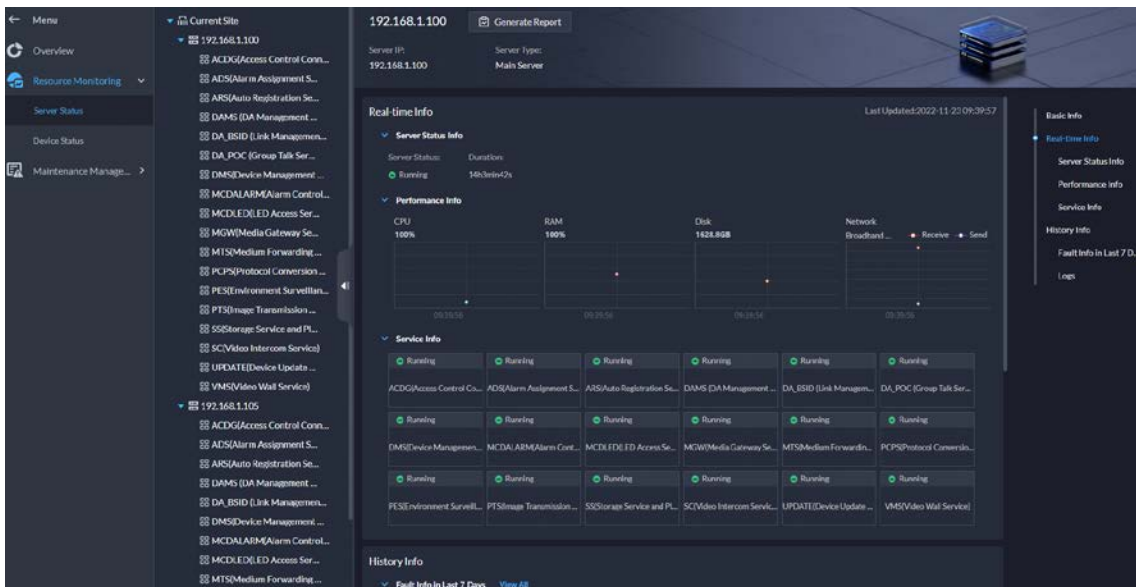
- Revamped the pages of Overview, Server Status, Device Status, and Faults
 - ◇ On the Overview page, you can view the overall running status of the platform, including the status of devices on main and sub servers, storage, status of servers, and fault trends. The data is refreshed every minute.

Figure 1-39 Overview



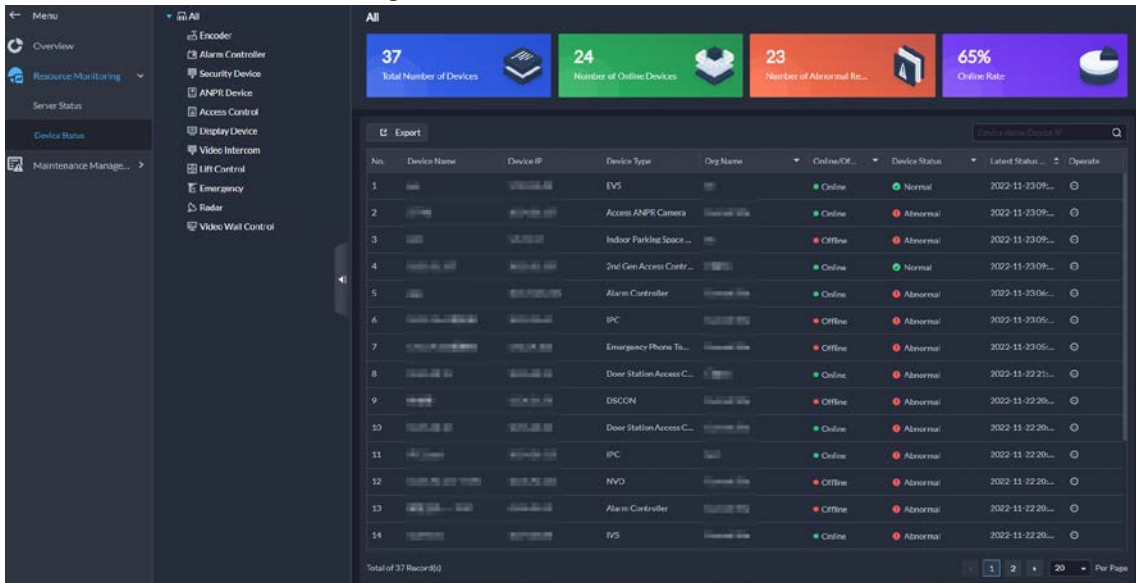
- ◇ On the Server Status page, you can check the running status and history information of the servers, including faults occurred in the last 7 days and logs generated on the current day.

Figure 1-40 Server status



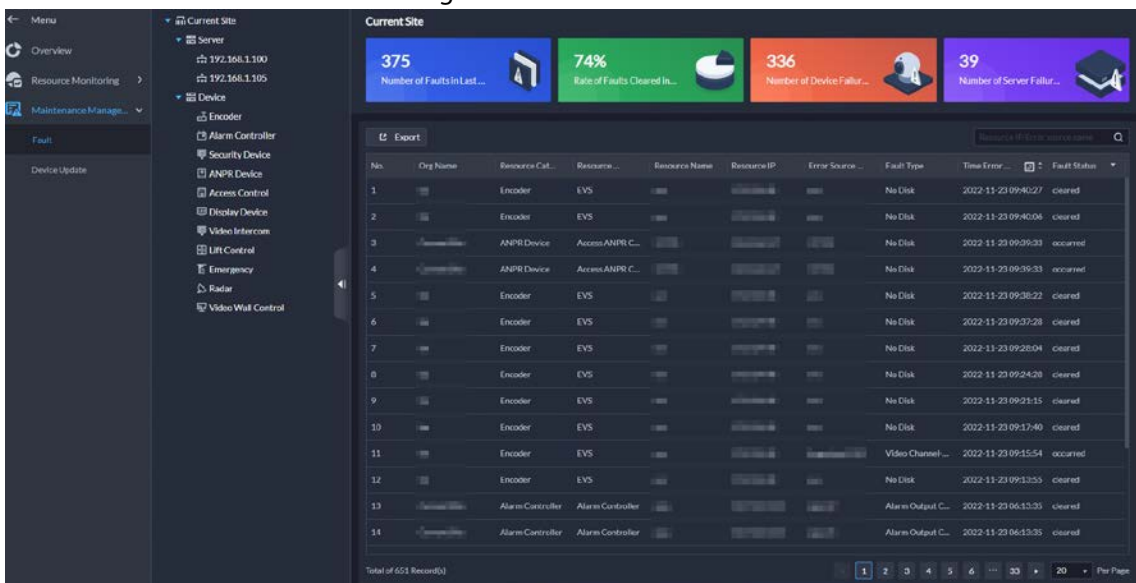
- ◇ On the Device Status page, you can check the status of all devices, including channel status, hard disk status, faults occurred in the past 7 days and logs of the current day.

Figure 1-41 Device status



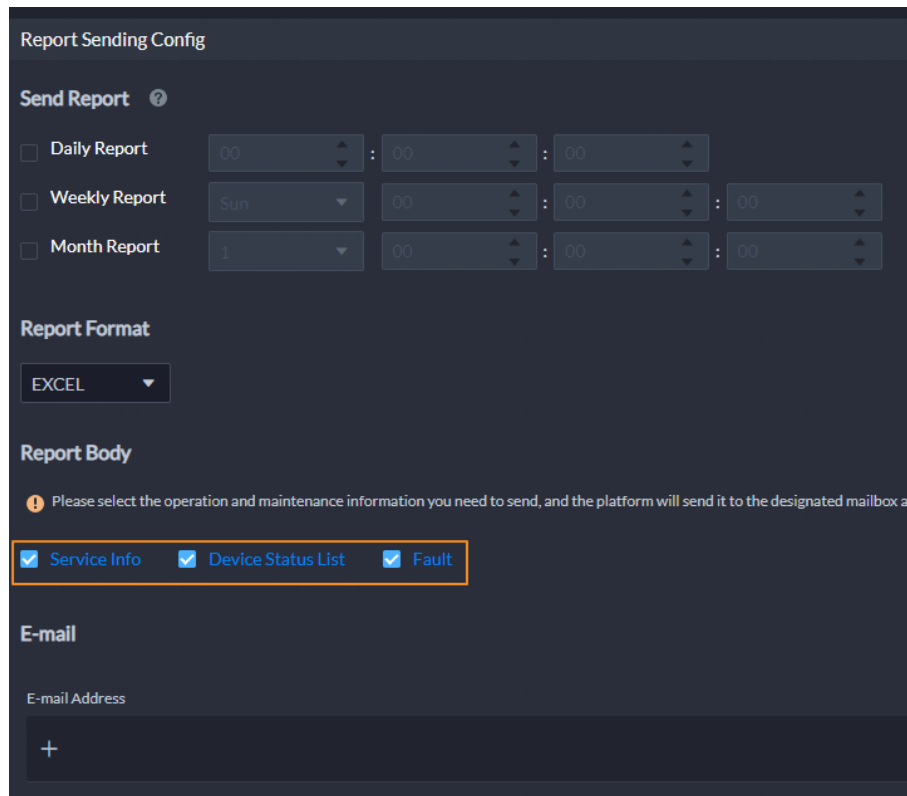
- ◇ On the Fault page, faults occurred in the last 7 days are displayed by default. Click a server or a device type to view all faults occurred in the last 7 days for that server or the devices under that type.

Figure 1-42 Fault



- A schedule report includes services information, device status list, and faults.

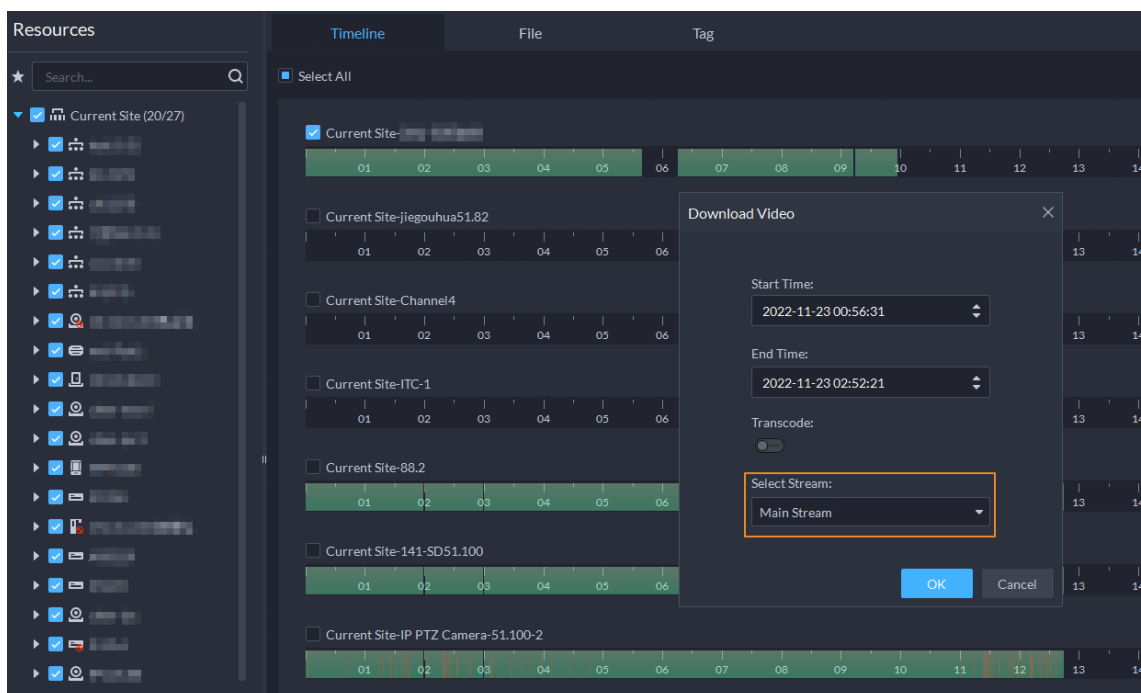
Figure 1-43 Schedule report content



1.3.15 Download Center

When downloading videos stored on devices by timeline, you can choose videos recorded in main stream or sub stream.

Figure 1-44 Select a stream type



1.3.16 Log

- Supports searching for devices logs from IPCs, NVRs, and alarm controllers.

Figure 1-45 Device logs

Time	Username	Log Type	Log Content
2022-12-05 15:3015	admin	Logout	Address : [redacted] Desc :
2022-12-05 15:3531	admin	Logout	Address : [redacted] Desc :
2022-12-05 14:5643	admin	Arming Failure	Address : [redacted] Desc: Remote Operation , Trans: true
2022-12-05 14:5839	admin	Disarm	Address : [redacted] Desc: Remote Operation Subsystem1 , Trans: true
2022-12-05 14:5838	admin	Save Config	Address : [redacted] Data: ZoneArmMode Desc: ZoneArmMode
2022-12-05 14:5838	admin	Save Config	Address : [redacted] Data: AreaArmMode Desc: AreaArmMode
2022-12-05 14:5633	System	Cancel Alarm	Address : [redacted] Desc: Subsystem1 , Trans: true
2022-12-05 14:5831	admin	Arming Failure	Address : [redacted] Desc: Remote Operation , Trans: true
2022-12-05 14:5832	admin	Arming Failure	Address : [redacted] Desc: Remote Operation , Trans: true
2022-12-05 14:5805	admin	Save Config	Address : [redacted] Data: AlarmSubsystem Desc: AlarmSubsystem
2022-12-05 14:5721	admin	Save Config	Address : [redacted] Data: ArmSchedule Desc: ArmSchedule
2022-12-05 14:5629	admin	Arming Failure	Address : [redacted] Desc: Remote Operation , Trans: true
2022-12-05 14:5623	admin	Disarm	Address : [redacted] Desc: Remote Operation Subsystem1 2 3 4 5 6 7 8 , T...
2022-12-05 14:5623	System	Cancel Alarm	Address : [redacted] Desc: Subsystem8 , Trans: true
2022-12-05 14:5627	System	Cancel Alarm	Address : [redacted] Desc: Subsystem7 , Trans: true
2022-12-05 14:5627	System	Cancel Alarm	Address : [redacted] Desc: Subsystem6 , Trans: true
2022-12-05 14:5625	System	Cancel Alarm	Address : [redacted] Desc: Subsystem5 , Trans: true
2022-12-05 14:5625	System	Cancel Alarm	Address : [redacted] Desc: Subsystem4 , Trans: true
2022-12-05 14:5625	System	Cancel Alarm	Address : [redacted] Desc: Subsystem3 , Trans: true
2022-12-05 14:5624	System	Cancel Alarm	Address : [redacted] Desc: Subsystem2 , Trans: true

- After enabling debug mode for a service, you can download the debug logs to your computer.

Figure 1-46 Download debug logs

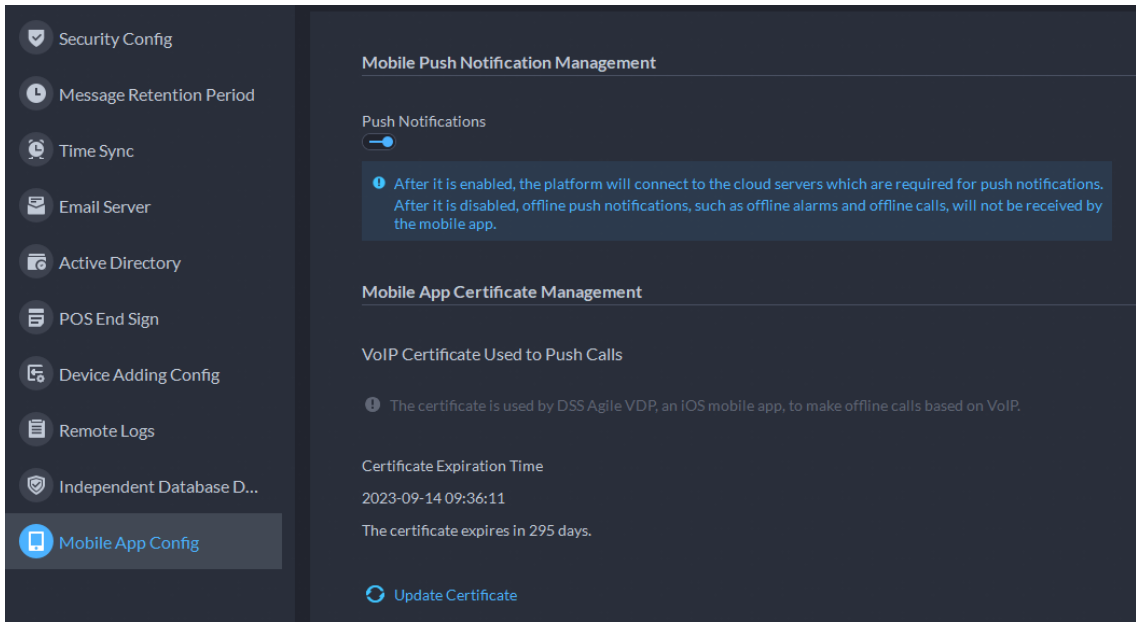
Service Name	Server Name	Server IP	Service Status	Enable Debug for Service Logs	Operation
SMC	192.168.1.100	192.168.1.100	Online	Toggle	Download
ACDG/WPMCD	192.168.1.100	192.168.1.100	Online	Toggle	Download
ADS	192.168.1.100	192.168.1.100	Online	Toggle	Download
ARS	192.168.1.100	192.168.1.100	Online	Toggle	Download

1.3.17 System Parameter Configuration

Supports turning on or off the push notification function, and manage the VoIP certificate for app.

- After turning off the push notification function, all app users will not receive any message.
- The VoIP certificate is used for calling iOS app users when they are not online.

Figure 1-47 App parameters



1.4 Operating System Compatibility Description

OS Name	OS Type	Platform Type	Test Result
Windows server 2019 standard (64-bit)	Physical machine	Server	Pass
Windows 10 20H2 Pro (64-bit)	Physical machine	Server	Pass
Windows 10 20H2 Pro (64-bit)	Virtual machine	Server	Pass
Windows server 2019 standard (64-bit)	Virtual machine	Server	Pass
Windows 11 21H2 Pro (64-bit)	Physical machine	Server	Pass
Windows 10 20H2 Pro (32-bit)	Physical machine	Client	Pass
Windows 10 20H2 Pro (64-bit)	Physical machine	Client	Pass
Windows 10 20H2 Pro (64-bit)	Virtual machine	Client	Pass
Windows server 2019 standard (64-bit)	Physical machine	Client	Pass
Windows 11 21H2 Pro (64-bit)	Physical machine	Client	Pass

ENABLING A SAFER SOCIETY AND SMARTER LIVING

ZHEJIANG DAHUA VISION TECHNOLOGY CO., LTD.

Address: No.1199 Bin'an Road, Binjiang District, Hangzhou, P. R. China | Website: www.dahuasecurity.com | Postcode: 310053

Email: overseas@dahuatech.com | Fax: +86-571-87688815 | Tel: +86-571-87688883