



# **DSS Express V8.002.0000000.0.R**

## **Release Notes**



---

# Legal Information

## Copyright

© 2022 ZHEJIANG DAHUA VISION TECHNOLOGY CO., LTD. All rights reserved.

This document cannot be copied, transferred, distributed, or saved in any form without the prior written permission of Zhejiang Dahua Vision Technology Co., LTD (hereinafter referred to as "Dahua").

The products described in this document may contain the software that belongs to Dahua or the third party. Without the prior written approval of the corresponding party, any person cannot (including but not limited to) copy, distribute, amend, abstract, reverse compile, decode, reverse engineer, rent, transfer, sublicense the software.

## Trademarks

The image shows four variations of the Dahua logo (with different underline styles) and the HDCVI logo. They are followed by the text "are the trademarks or registered trademarks of Dahua."

All other company names and trademarks mentioned herein are the properties of their respective owners.

## Disclaimer

- These release notes are for reference only. Slight differences might be found between the release notes and the product.
- Succeeding products and release notes are subject to change without notice.
- If there is any uncertainty or controversy, we reserve the right of final explanation.

---

# Table of Contents

<b>Legal Information</b> .....	<b>I</b>
<b>Release Notes</b> .....	<b>1</b>
1.1 Basic Version Information.....	1
1.2 New and Optimized Functions .....	1
1.2.1 New Functions.....	1
1.2.2 Optimized Functions.....	2
1.2.3 Fixed Bugs.....	3
1.3 Description of New and Optimized Functions.....	4
1.3.1 Device Management .....	4
1.3.2 User Management.....	5
1.3.3 Authorization.....	6
1.3.4 Event.....	7
1.3.5 Person and Vehicle Management.....	10
1.3.6 Watch List.....	11
1.3.7 Monitoring Center.....	13
1.3.8 DeepXplore .....	14
1.3.9 Map.....	15
1.3.10 Access Control.....	16
1.3.11 Intelligent Analysis .....	19
1.3.12 Download Center.....	19
1.3.13 Log.....	20
1.3.14 System Parameter Configuration .....	21
1.4 Operating System Compatibility Description.....	21

# Release Notes

## 1.1 Basic Version Information

<b>Product name</b>	DSS Express
<b>Version</b>	V8.002.0000000.0.R
<b>Software package information</b>	General_DSS-Express_Win64_IS_V8.002.0000000.0.R.20221201.exe
<b>OS requirements</b>	CPU: Intel® Core(TM) I7-9700K CPU@3.60 GHz Memory: 8 GB Network Card: 1 Gps Hard Disk Type: HDD 1 TB Free space: 500 GB or more
<b>Release date</b>	December 2022

## 1.2 New and Optimized Functions

### 1.2.1 New Functions

Module	Functions
Device management	<ul style="list-style-type: none"> <li>• Supports configuring channel features for multiple channels at the same time.</li> <li>• Supports alarm input channels of IPCs added to an EVS.</li> </ul>
User management	You can now control the permission for users to record videos and take snapshots of real-time videos.
Authorization	Displays the detailed information of each activation code on the PC client.
Event	<ul style="list-style-type: none"> <li>• Supports DHOP events from devices.</li> <li>• Added events for video channels: Crowd detection, and tailing detection.</li> <li>• Added custom alarm that uses alarm codes to receive alarms from devices that are not listed on the platform. When triggered, these type of alarms will not upload snapshots to the platform.</li> <li>• Added combined event to trigger an alarm according to the relationship of the time of trigger for two alarms.</li> <li>• Supports configuring a holiday template so that an alarm will not be triggered during the defined period.</li> <li>• Supports configuring trigger intervals for alarms so that only one alarm will be triggered during the defined interval.</li> </ul>

Module	Functions
Person and vehicle management	<ul style="list-style-type: none"> <li>• Vehicles can now be managed by groups. Persons and vehicles use the same groups.</li> <li>• Added permission control for person and vehicle groups. Only the selected roles and their users can access the group.</li> </ul>
Watch list	Added permission face comparison groups and vehicle arming groups. Only the selected roles and their users can access the group.
Monitoring center	When viewing real-time videos or playing back videos, detection area and exclusion area can be overlaid on the window.
Map	<ul style="list-style-type: none"> <li>• Displays all alarms in a list. Click an alarm to locate the alarm source.</li> <li>• Displays alarm output channels.</li> </ul>
Access control	<ul style="list-style-type: none"> <li>• If access control devices go offline and then online again, the platform can automatically synchronize the records from them during that period at the defined time.</li> <li>• Added permission control for access permission groups. Only the selected roles and their users can access the group.</li> <li>• Logs will be generated for users unlocking doors on the client. The names of the users who unlock a door on the client will be displayed.</li> </ul>
Intelligent analysis	<ul style="list-style-type: none"> <li>• Supports displaying the number of people that passed by.</li> <li>• Supports turning off calibrating the number of people staying every day.</li> </ul>
System parameter configuration	<ul style="list-style-type: none"> <li>• Supports managing the VoIP certificate for app.</li> <li>• Supports turning on or off the push notification function and adding devices through P2P.</li> </ul>
Logs	<ul style="list-style-type: none"> <li>• Supports searching for devices logs from IPCs, NVRs, and alarm controllers.</li> <li>• Supports downloading service logs.</li> </ul>
App	DSS Agile VDP supports pop-up dialogs for incoming calls.
Others	<ul style="list-style-type: none"> <li>• Supports TLS1.2 email servers.</li> <li>• Supports Windows 11.</li> <li>• Supports Brazilian Portuguese.</li> </ul>

## 1.2.2 Optimized Functions

Module	Function Description
Device management	<ul style="list-style-type: none"> <li>• You can now select "Other" for the manufacturers of ONVIF devices.</li> <li>• You can configure the stream type of the video channels of ONVIF devices.</li> <li>• Optimized how the platform acquires channels from devices based on the license information. This is to allow you to add a device even if the license prevents you from adding all the channels of that device to the platform.</li> <li>• Supports viewing the local IP address and the IP address used for automatic registration for devices added by automatic registration.</li> </ul>
Authorization	Removed the limit on the activation codes that you can use.
Event	<ul style="list-style-type: none"> <li>• The platform will display the type of sound for audio exception, including alarm, cry, gunshot, explosion, scream, and crashing glass.</li> </ul>

Module	Function Description
	<ul style="list-style-type: none"> <li>The brands, colors, and types of vehicles will be displayed for events that involve license plate recognition.</li> </ul>
Person and vehicle management	When adding a person or editing a person's information, you can select vehicles that have been added to the platform for that person.
Monitrong center	<ul style="list-style-type: none"> <li>When playing back videos stored on the platform, videos will be played by time instead of by files. This is to avoid jumpy videos caused by overlapped timeline.</li> <li>Supports going back to the main map when you are in a sub map.</li> <li>Logs will be generated for both starting and stopping playing back a video.</li> </ul>
Video wall	When switching tour plans, NVDs will not go into a black screen, but display the last frame.
Map	<ul style="list-style-type: none"> <li>When zooming out on the map, the same type of resources that are near each other will merge into one point.</li> <li>Manufacturers of devices will not be displayed.</li> </ul>
DeepXplore	<ul style="list-style-type: none"> <li>Added 58 vehicle categories for vehicle capture records, such as small-sized and large-sized vehicles.</li> <li>Added facial features for face capture records, including face mask, beard, and glasses.</li> </ul>
Access control	<ul style="list-style-type: none"> <li>Supports up to 1,500 public passwords.</li> <li>Supports manually refreshing the list of app users.</li> <li>Supports editing fence station call groups.</li> </ul>
Parking lot	Optimized the display of parking duration to day/hour/minute/second for parking overtime.
Intelligent analysis	People counting and calibration will be performed according to the time zone of devices.
Download center	When downloading videos stored on devices by timeline, you can choose videos recorded in main stream or sub stream.
Others	<ul style="list-style-type: none"> <li>Optimized the protection mechanism for when the power to the server is unexpectedly disconnected.</li> <li>Sensitive information saved by the client will be encrypted.</li> </ul>

### 1.2.3 Fixed Bugs

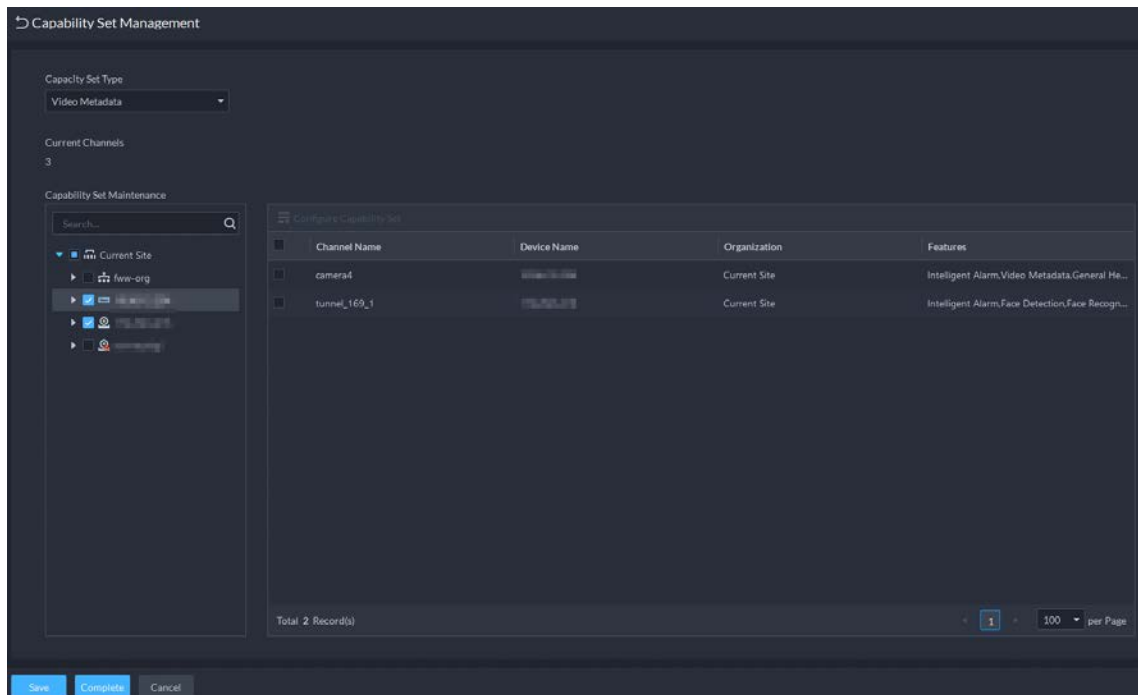
- The installation path of the PC client supports the system language. For example, if the system language is Chinese, the installation path of the PC client can contain Chinese characters.
- The login information became unreadable if you overwrote the existing PC client installation with a new one after the network card information was changed.
- Devices added to the platform by automatic registration could not go online, and reasons were not provided.
- 2 alarms were reported when a device was offline and then online again.
- License plate numbers in Arabian were not correctly displayed.
- Persons could not be searched for using Bulgarian.

## 1.3 Description of New and Optimized Functions

### 1.3.1 Device Management

- Supports configuring channel features for multiple channels at the same time.

Figure 1-1 Configure channels features for multiple channels

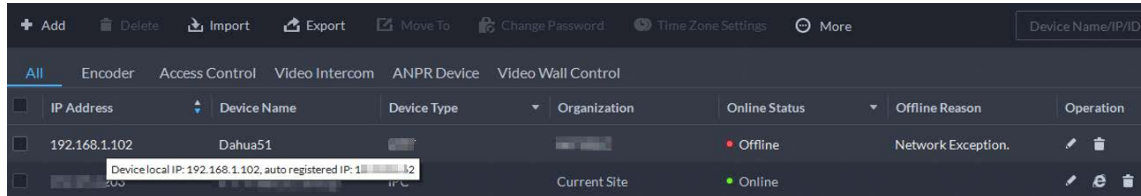


- Optimized how the platform acquires channels from devices based on the license information. This is to allow you to add a device even if the license prevents you from adding all the channels of that device to the platform.
  - ◇ When adding a device, the platform will obtain some channels if the number of a type of channels on the device exceeds the license limit.
  - ◇ Encoders: When you want to add devices through import, IP segment, or automatic registration but the license limit has been reached for video channels, they will be added to the List of Abnormally Added Devices.
  - ◇ Access control devices: When you want to add devices through import, IP segment, or automatic registration but the license limit has been reached for access control channels, they will be added to the List of Abnormally Added Devices.
  - ◇ Lift control devices: When you want to add devices through import, IP segment, or automatic registration but the license limit has been reached for lift control channels, they will be added to the List of Abnormally Added Devices.
  - ◇ The platform can only obtain certain channels if the platform cannot add all the channels of that channel feature. For example, there are 32 face recognition channels on an NVR but only 16 are allowed to be added to the platform, the platform will only obtain the first 16 channels.
  - ◇ The platform will obtain the information of devices added when they are offline, and by import, automatic registration, and IP segment, the platform will automatically obtain their information when they are online for the first time. This does not include devices added by

ONVIF and Jiuzhou protocols.

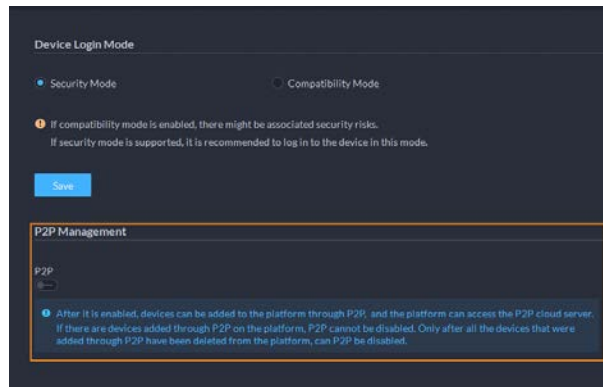
- View the local IP address and the IP address used for automatic registration for devices added by automatic registration.

Figure 1-2 View IP addresses



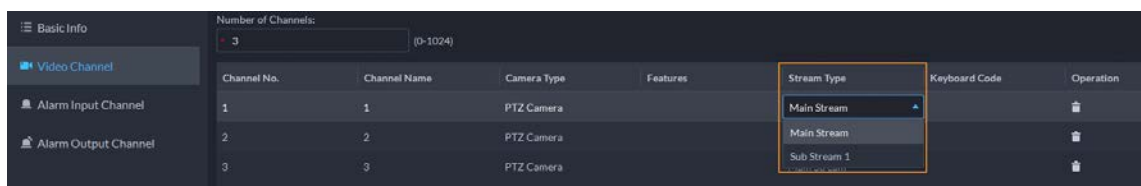
- Supports turning on or off adding devices by P2P. After turned off, you cannot add devices to the platform through P2P.

Figure 1-3 Turn on or off P2P



- You can configure the stream type of the video channels of ONVIF devices. When switching to the other stream type that you did not configure for a channel, the platform will prompt that you have no permission.

Figure 1-4 Configure stream type

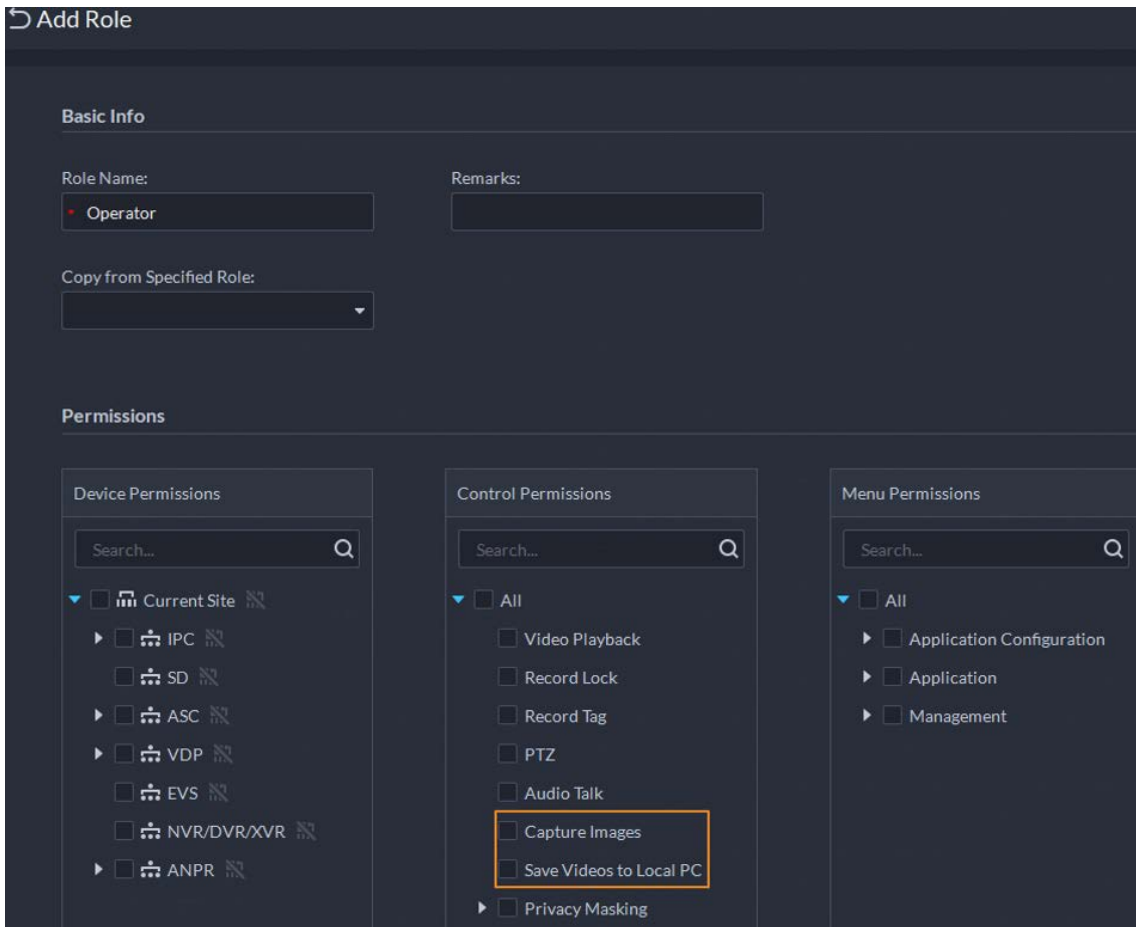


### 1.3.2 User Management

You can now control the permission for users to record videos and take snapshots of real-time videos.



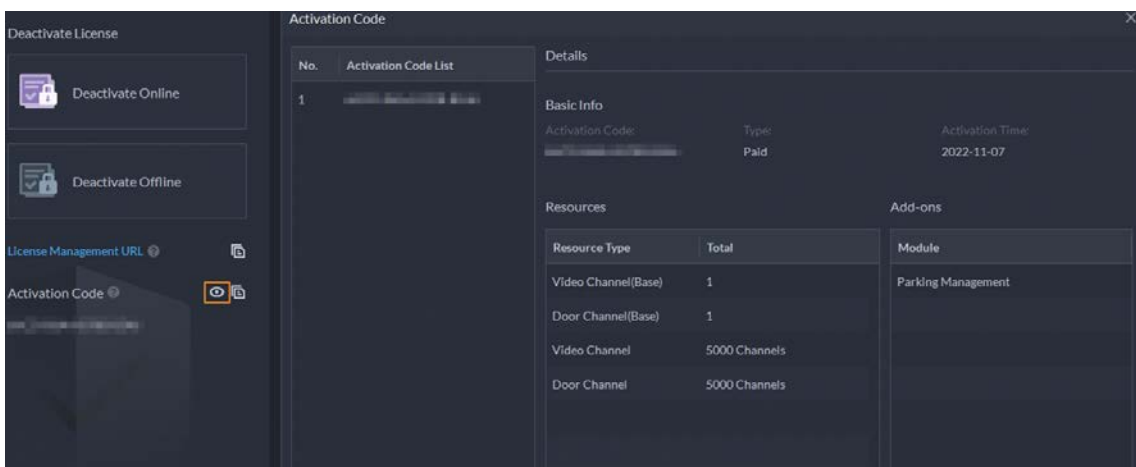
Figure 1-5 Permission control



### 1.3.3 Authorization

Displays the detailed information of each activation code on the PC client.

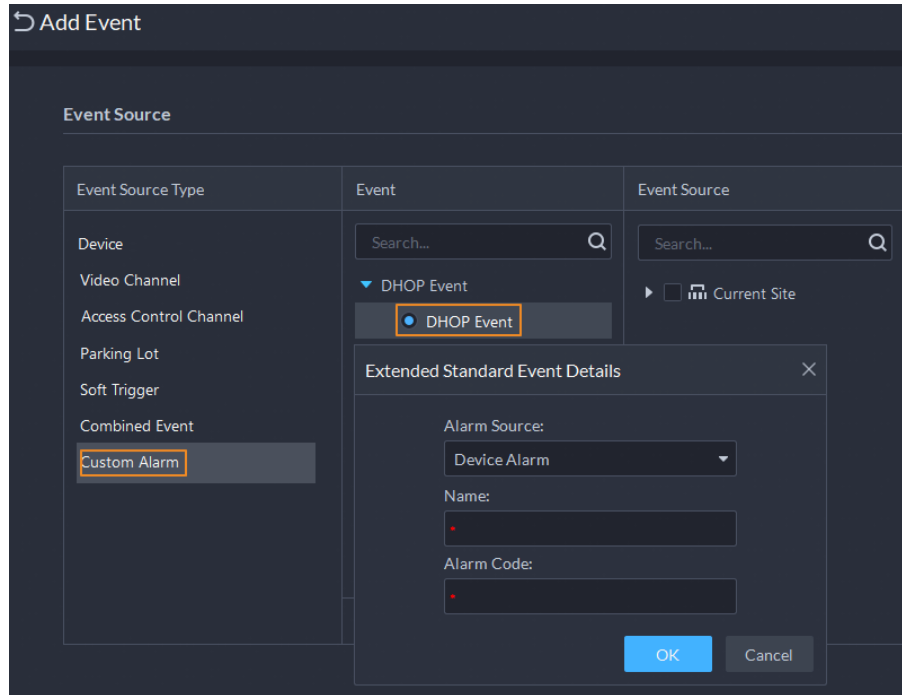
Figure 1-6 Activation code information



### 1.3.4 Event

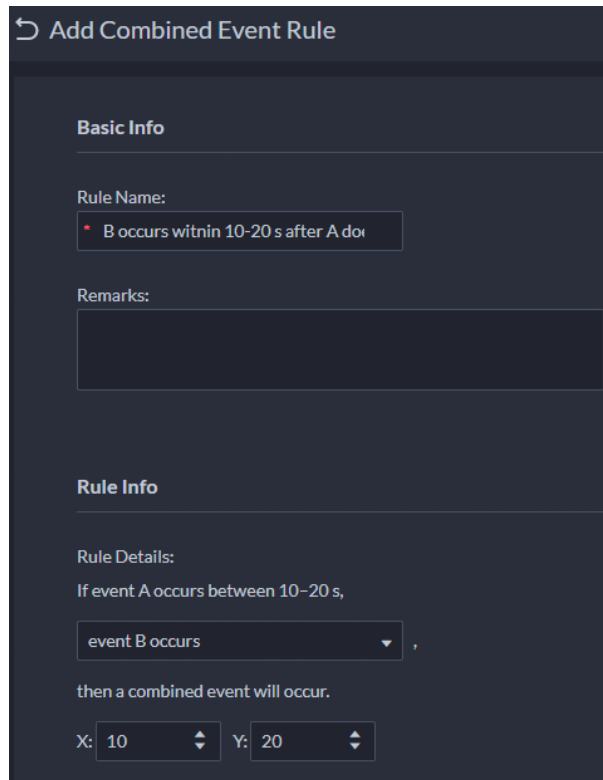
- Supports custom alarm that uses alarm codes to receive alarms from devices that are not listed on the platform.

Figure 1-7 Custom alarm



- Added combined event to trigger an alarm according to the relationship of the time of trigger for two alarms. For example, select event B occurs and configure the X and Y to be 10 and 50 seconds respectively. If event B occurs during the 10 seconds to 50 seconds after event A occurs, a combined event is triggered, and then the platform will perform defined linked actions.

Figure 1-8 Combined event



**Add Combined Event Rule**

**Basic Info**

Rule Name:  
B occurs within 10-20 s after A do...

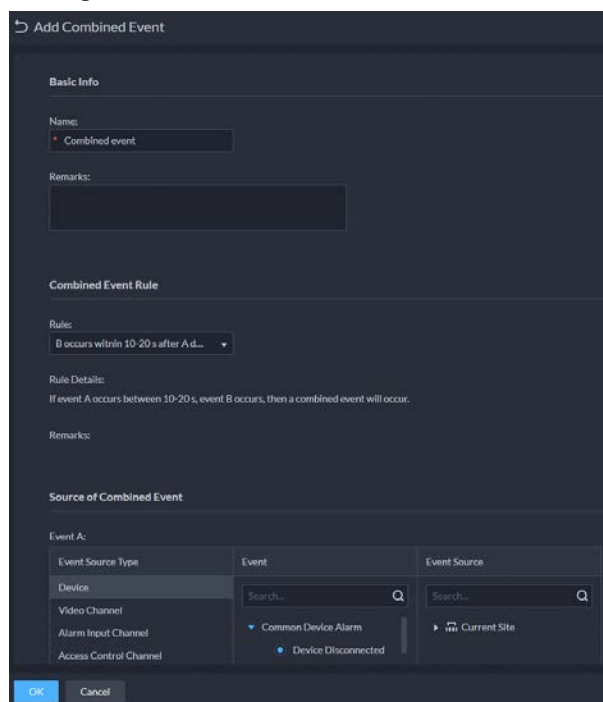
Remarks:

**Rule Info**

Rule Details:  
If event A occurs between 10-20 s,  
event B occurs  
then a combined event will occur.

X: 10 Y: 20

Figure 1-9 Add a combined event



**Add Combined Event**

**Basic Info**

Name:  
Combined event

Remarks:

**Combined Event Rule**

Rule:  
B occurs within 10-20 s after A d...

Rule Details:  
If event A occurs between 10-20 s, event B occurs, then a combined event will occur.

Remarks:

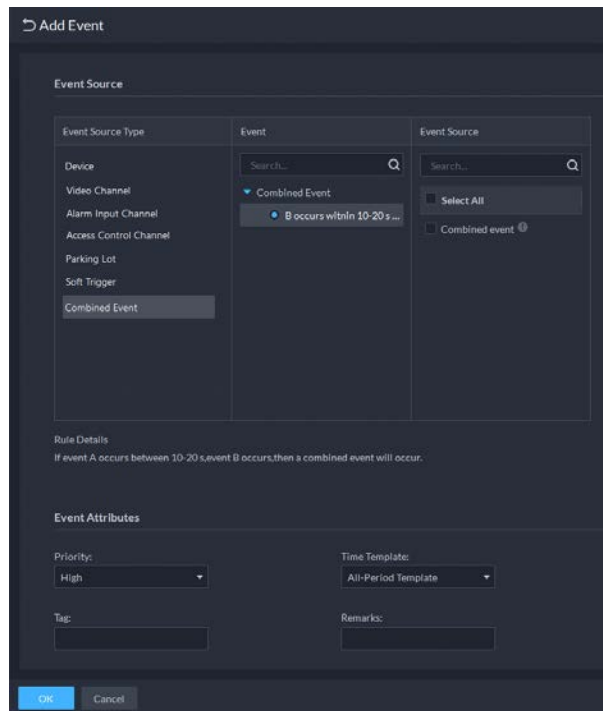
**Source of Combined Event**

Event A:

Event Source Type	Event	Event Source
Device	Search...	Search...
Video Channel	Common Device Alarm	Current Site
Alarm Input Channel	Device Disconnected	
Access Control Channel		

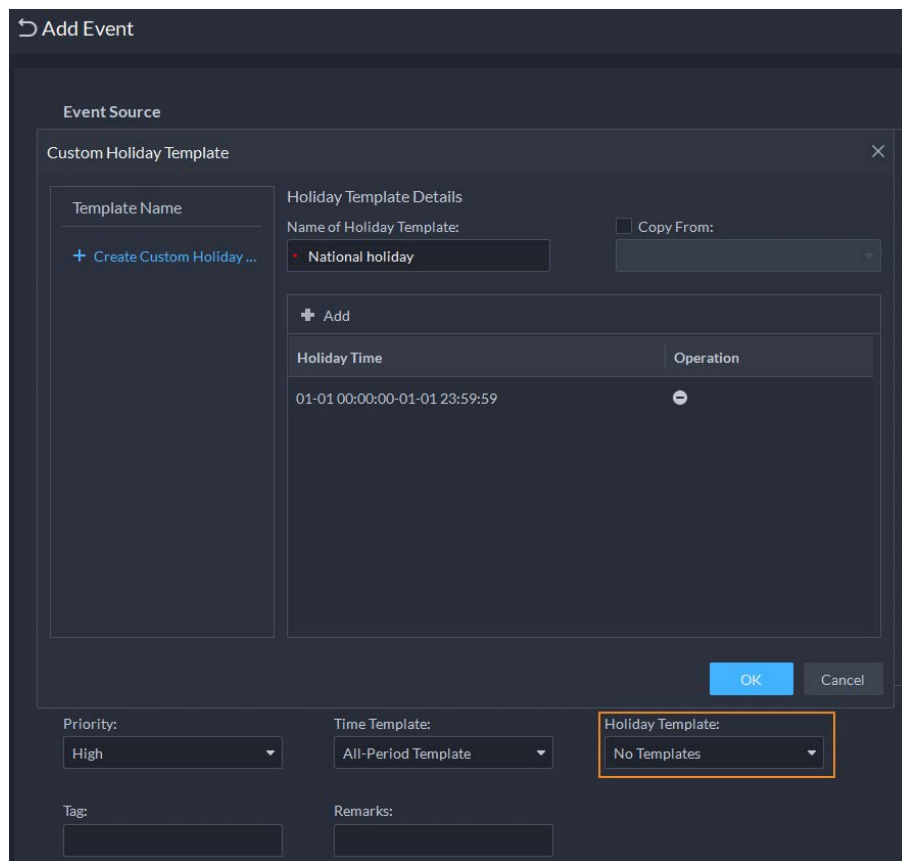
OK Cancel

Figure 1-10 Configure linked actions for the event



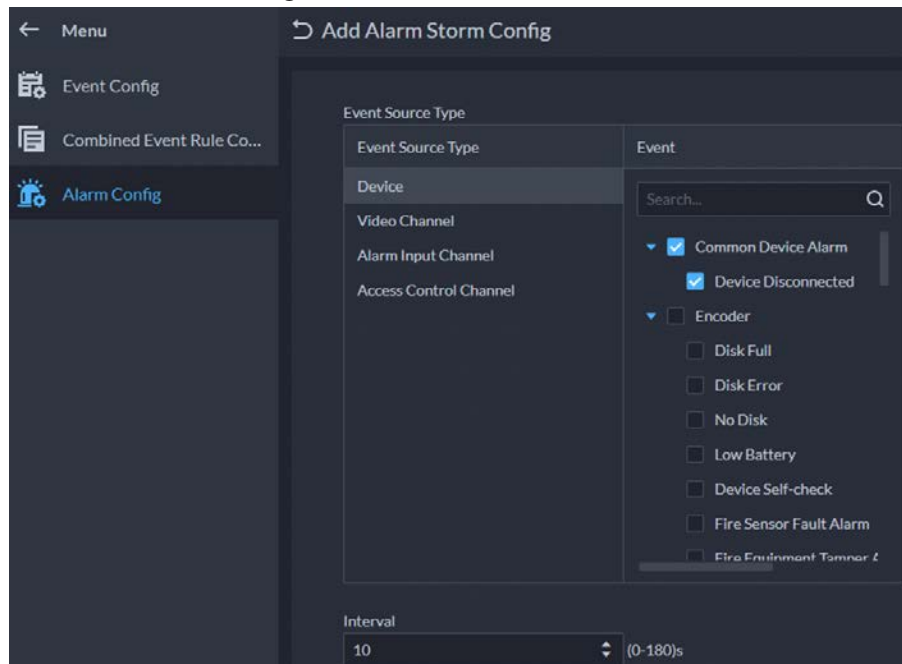
- Supports configuring a holiday template so that an alarm will not be triggered during the defined period.

Figure 1-11 Holiday template



- Supports configuring trigger intervals for alarms so that only one alarm will be triggered during the defined interval.

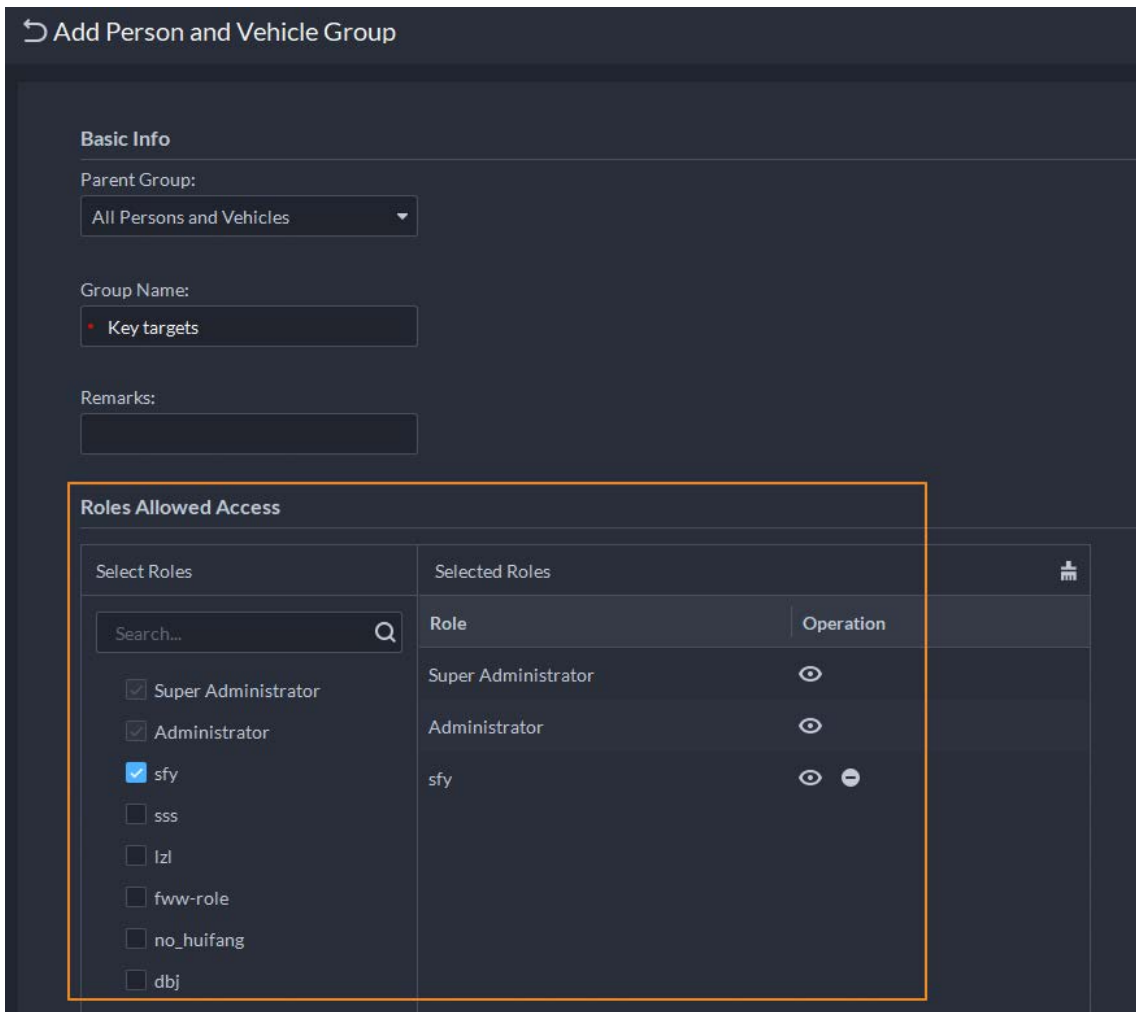
Figure 1-12 Alarm storm



### 1.3.5 Person and Vehicle Management

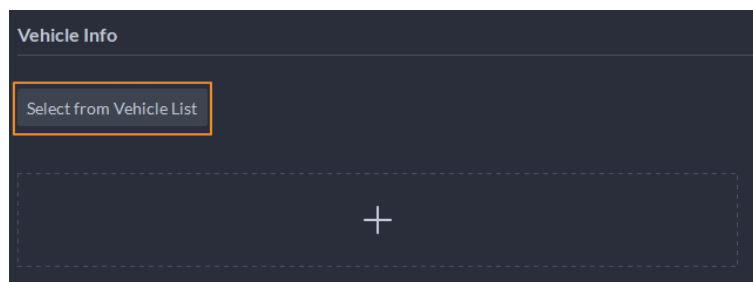
- Added permission control for person and vehicle groups. Only the selected roles and their users can access the group.

Figure 1-13 Permission control



- When adding or editing person information, you can select vehicles that have been added to the platform.

Figure 1-14 Select from vehicle list



### 1.3.6 Watch List

Added permission face comparison groups and vehicle arming groups. Only the selected roles and their users can access the group.

Figure 1-15 Permission control for face comparison group

**Add Face Comparison Group**

**Basic Info**

Face Comparison Group Name:  
Key targets

Color:  
Gray

Remarks:

**Roles Allowed Access**

Select Roles	Selected Roles
<input checked="" type="checkbox"/> Super Administrator	Super Administrator
<input checked="" type="checkbox"/> Administrator	Administrator
<input checked="" type="checkbox"/> sfy	sfy
<input type="checkbox"/> sss	
<input type="checkbox"/> lzl	
<input type="checkbox"/> fww-role	
<input type="checkbox"/> no_huifang	
<input type="checkbox"/> dbj	

Figure 1-16 Permission control for vehicle arming group

**Add Vehicle Arming Group**

**Basic Info**

Vehicle Arming Group Name:  
Key targets

Color:  
Gray

Remarks:

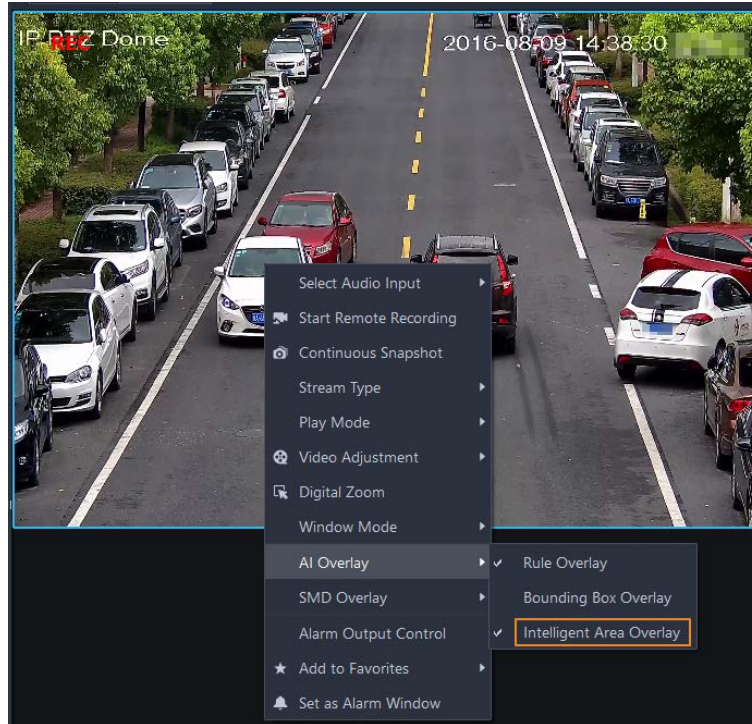
**Roles Allowed Access**

Select Roles	Selected Roles
<input checked="" type="checkbox"/> Super Administrator	Super Administrator
<input checked="" type="checkbox"/> Administrator	Administrator
<input checked="" type="checkbox"/> sfy	sfy
<input type="checkbox"/> sss	
<input type="checkbox"/> lzl	
<input type="checkbox"/> fww-role	
<input type="checkbox"/> no_huifang	
<input type="checkbox"/> dbj	

### 1.3.7 Monitoring Center

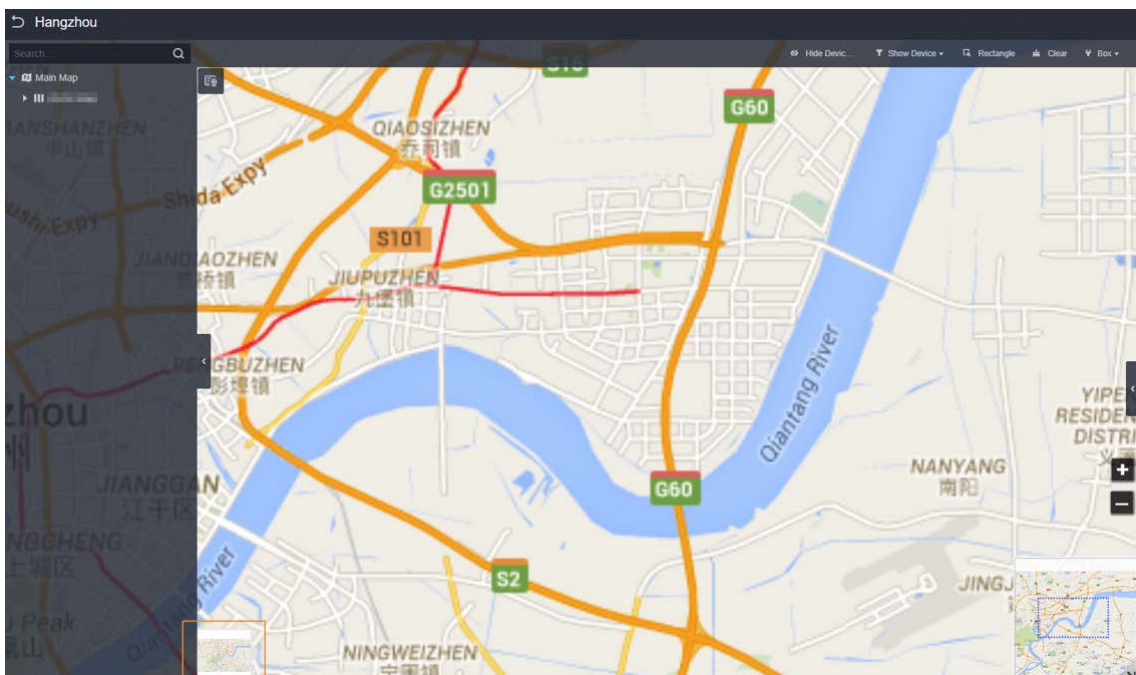
- When viewing real-time videos or playing back videos, detection area and exclusion area can be overlaid on the window.

Figure 1-17 Intelligent area



- Supports going back to the main map when you are in a sub map.

Figure 1-18 Go back to the main map



- Logs will be generated for both starting and stopping playing back a video.



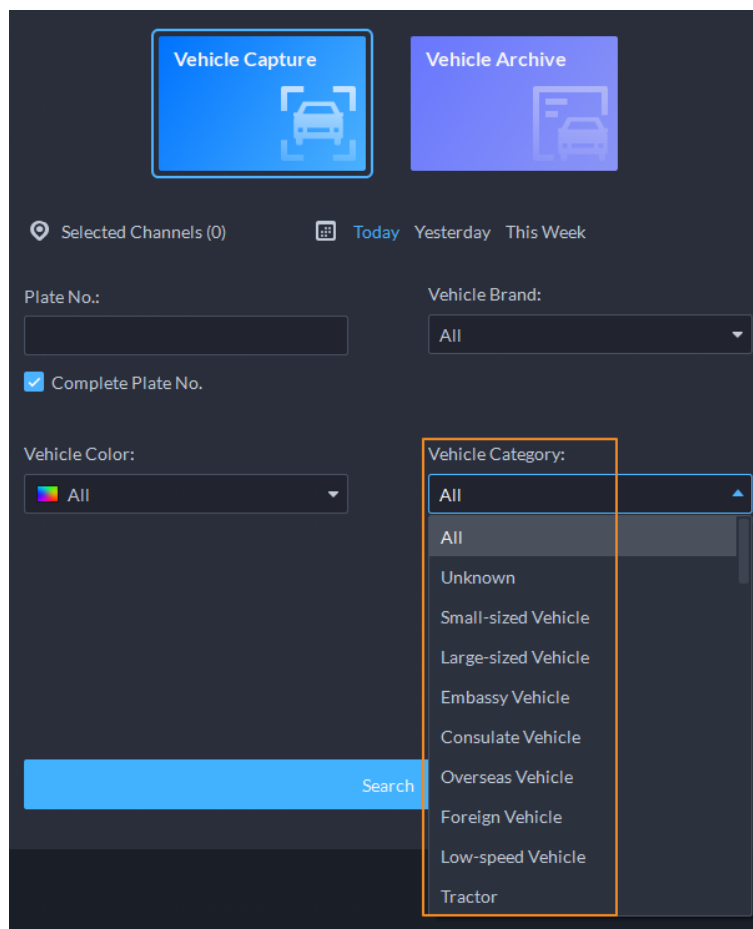
Figure 1-19 Playback logs

Time	Username	Log Type	Log Content
2022-11-22 19:18:19	system	Record Playback	
2022-11-22 19:17:41	system	Record Playback	Stopped playing the video [device name (chen-ipc1) dev...
2022-11-22 19:17:25	system	Record Playback	Started playing the video [device name (chen-ipc1) dev...
2022-11-22 18:53:53	system	Record Playback	

### 1.3.8 DeepXplore

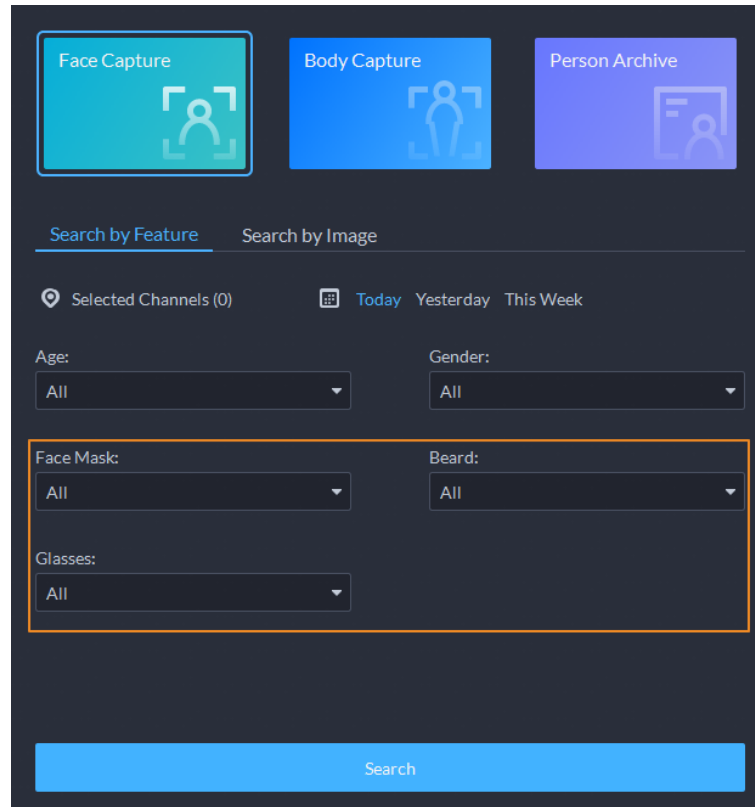
- Added 58 vehicle categories for vehicle capture records, such as small-sized and large-sized vehicles.

Figure 1-20 Vehicle category



- Added facial features for face capture records, including face mask, beard, and glasses.

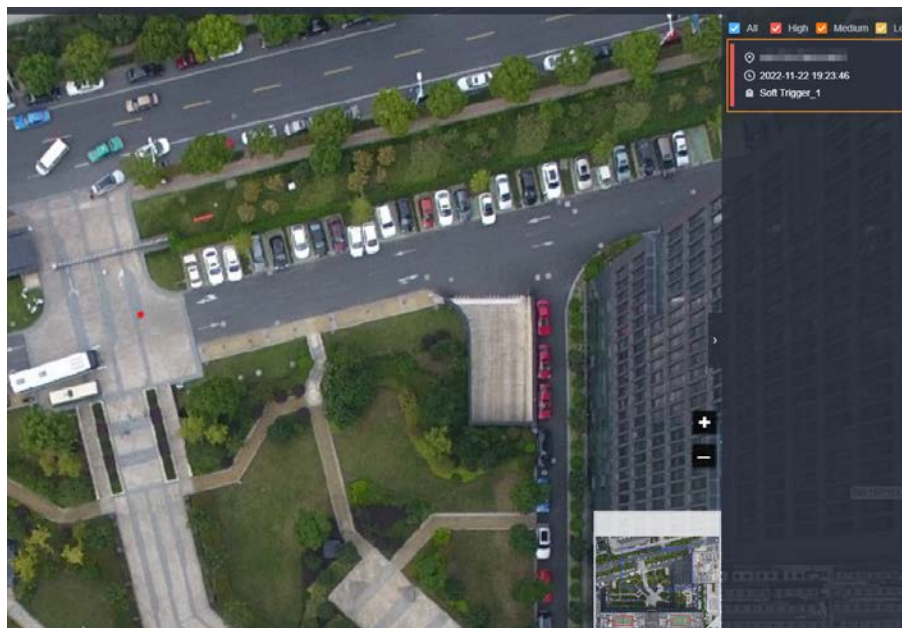
Figure 1-21 Facial features



### 1.3.9 Map

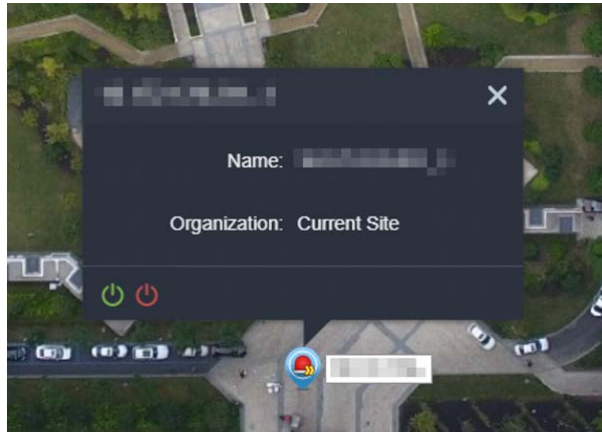
- All alarm sources will be displayed in a list. Click an alarm and the map will zoom in to the location of the device that triggered the alarm.

Figure 1-22 Alarm source and positioning



- Displays alarm output channels.

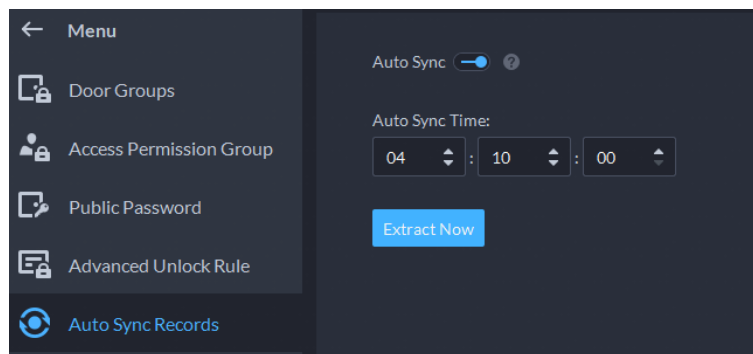
Figure 1-23 Alarm output channel



### 1.3.10 Access Control

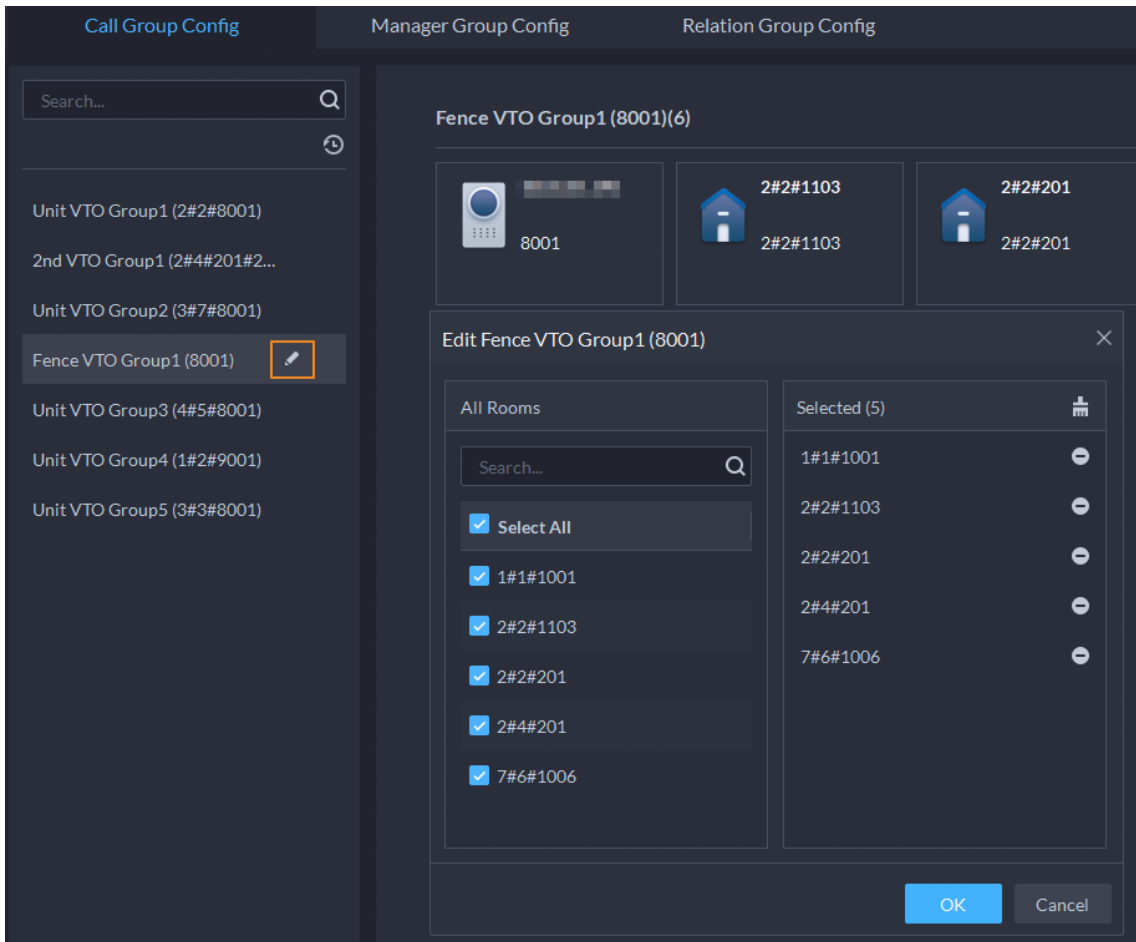
- If access control devices go offline and then online again, the platform can automatically synchronize records from them during that period at the defined time.

Figure 1-24 Automatically synchronize records



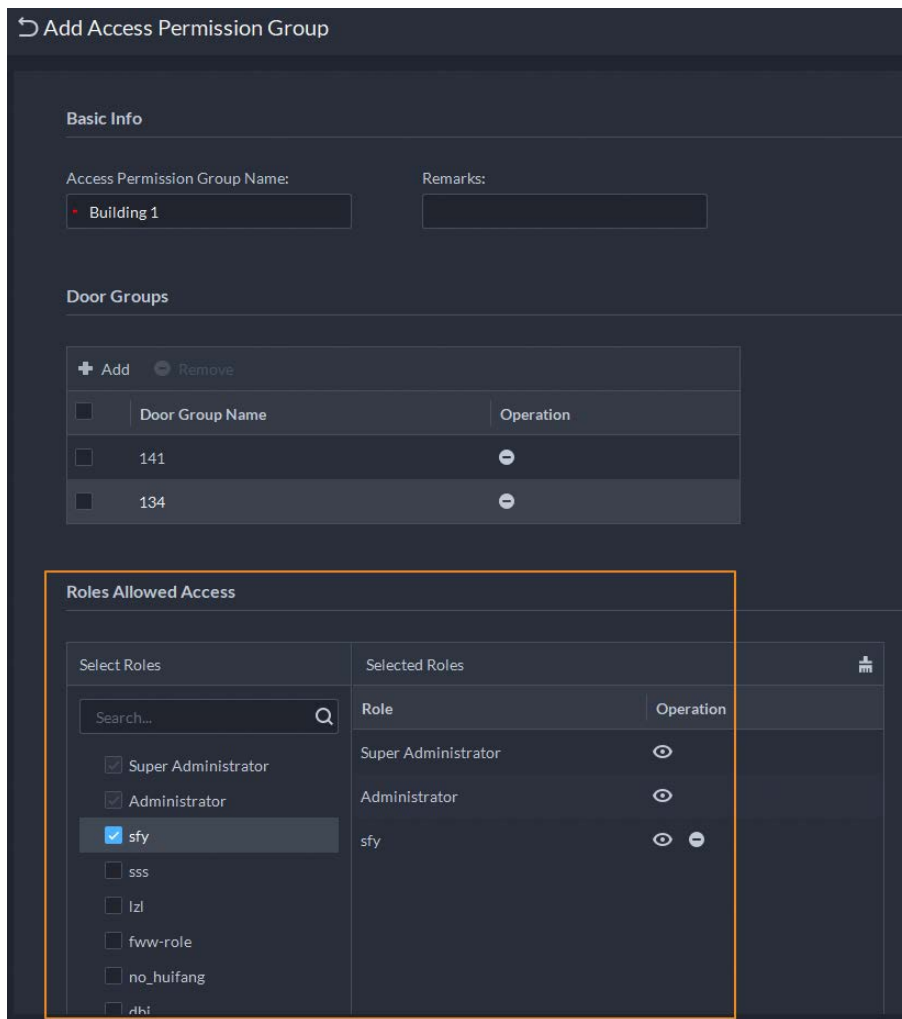
- Supports editing fence station call groups.

Figure 1-25 Edit a fence station call group



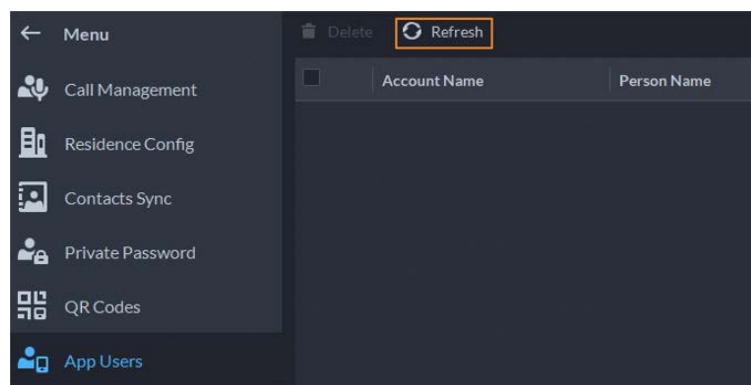
- Added permission control for access permission groups. Only the selected roles and their users can access the group.

Figure 1-26 Permission control



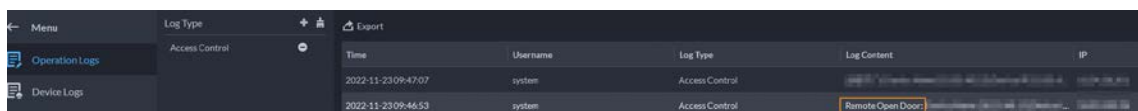
- Supports manually refreshing the list of app users.

Figure 1-27 Manually refresh



- Logs will be generated for users unlocking doors on the client. The names of the users who unlock a door on the client will be displayed.

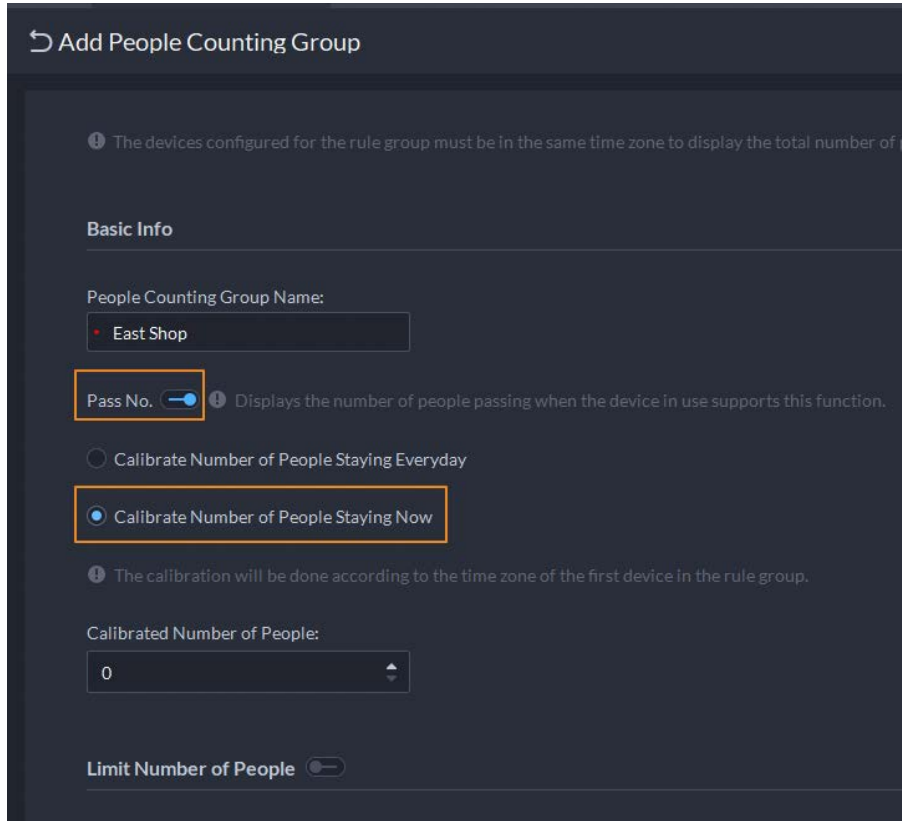
Figure 1-28 Log of remote unlock



### 1.3.11 Intelligent Analysis

Supports displaying the number of people that passed by, and turning off calibrating the number of people staying every day.

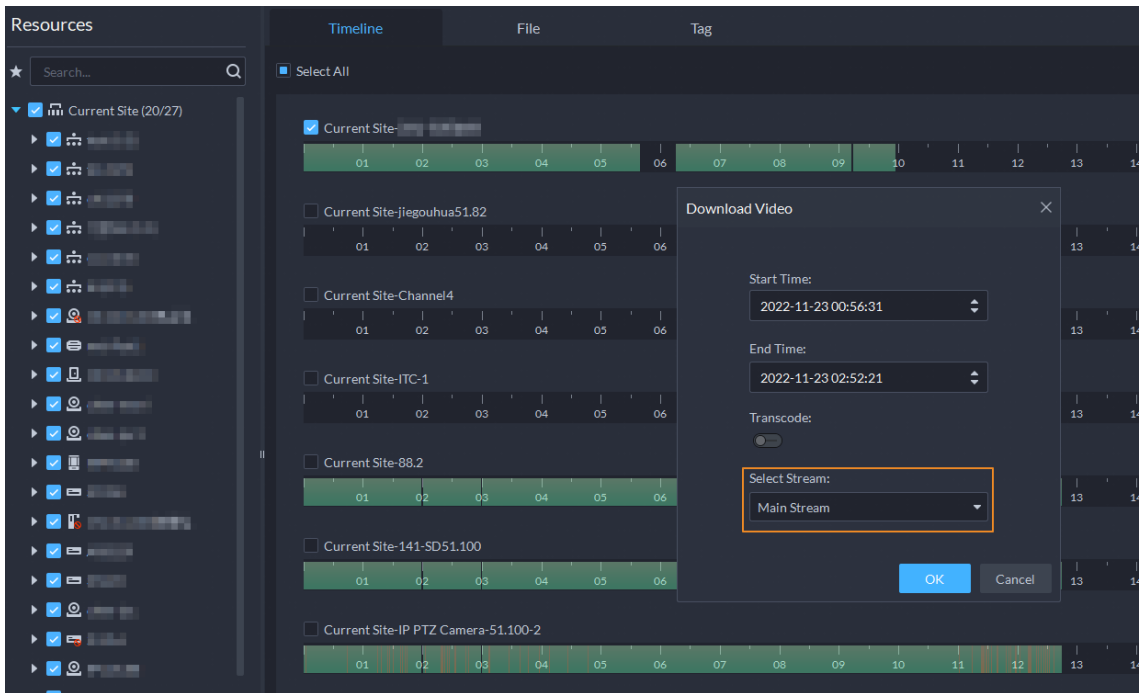
Figure 1-29 People passed by and turn off number calibration



### 1.3.12 Download Center

When downloading videos stored on devices by timeline, you can choose videos recorded in main stream or sub stream.

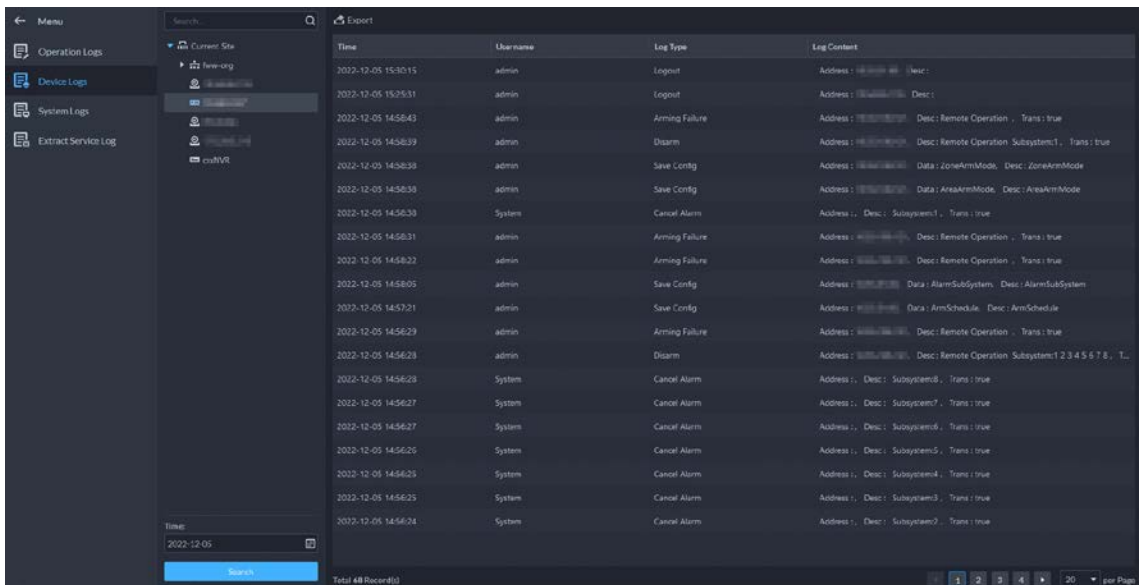
Figure 1-30 Select a stream type



### 1.3.13 Log

- Supports searching for devices logs from IPCs and NVRs.

Figure 1-31 Device logs



- After enabling debug mode for a service, you can download the debug logs to your computer.

Figure 1-32 Download debug logs

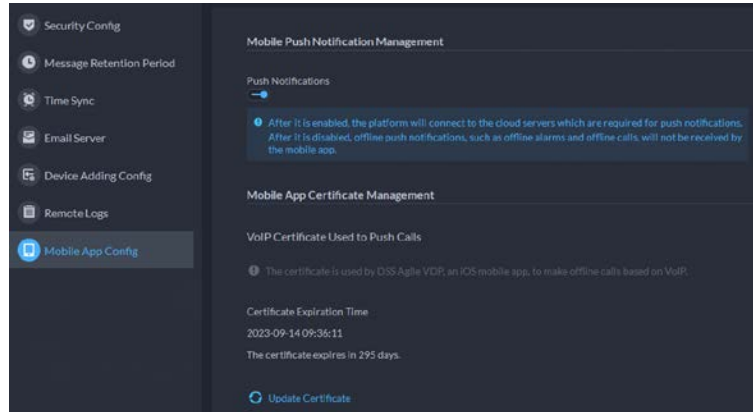


### 1.3.14 System Parameter Configuration

Supports turning on or off the push notification function, and manage the VoIP certificate for app.

- After turning off the push notification function, all app users will not receive any message.
- The VoIP certificate is used for calling iOS app users when they are not online.

Figure 1-33 App parameters



## 1.4 Operating System Compatibility Description

OS Name	OS Type	Platform Type	Test Result
Windows 10 20H2 Pro (64-bit)	Physical machine	Server	Pass
Windows 10 20H2 Pro (32-bit)	Physical machine	Server	Pass
Windows 10 20H2 Pro (64-bit)	Virtual machine	Server	Pass
Windows 11 21H2 Pro (64-bit)	Physical machine	Server	Pass
Windows 10 20H2 Pro (64-bit)	Physical machine	Client	Pass
Windows 10 20H2 Pro (32-bit)	Physical machine	Client	Pass
Windows 10 20H2 Pro (64-bit)	Virtual machine	Client	Pass
Windows 11 21H2 Pro (64-bit)	Physical machine	Client	Pass



ENABLING A SAFER SOCIETY AND SMARTER LIVING

ZHEJIANG DAHUA VISION TECHNOLOGY CO., LTD.

Address: No.1199 Bin'an Road, Binjiang District, Hangzhou, P. R. China | Website: [www.dahuasecurity.com](http://www.dahuasecurity.com) | Postcode: 310053

Email: [overseas@dahuatech.com](mailto:overseas@dahuatech.com) | Fax: +86-571-87688815 | Tel: +86-571-87688883